



# TOWN OF BROOKLINE

Massachusetts

## PRESERVATION COMMISSION APPLICATION FOR DEMOLITION CERTIFICATE

Application Number: \_\_\_\_\_

Date Received: \_\_\_\_\_

Hearing Date: \_\_\_\_\_

I. PROPERTY ADDRESS 115 Greenough St.  
II. OWNER Town of Brookline (of Public Schools of Brookline) PHONE 617-267-6449  
ADDRESS 333 Washington St. Bldg. Dept. ZIP CODE 02445  
E-MAIL ADDRESS rmassak@brookline.ma.gov

III. BUILDING TYPE OR SECTION TO BE DEMOLISHED

Town owned school building (Robots' Wing of HS)

### FEE SCHEDULE FOR DEMOLITION CERTIFICATES

Please make out two checks payable to the Town of Brookline in the amount of \$100 and \$200.  
If the building is determined Non-Significant, the \$200 check will be returned to you.

\$200.00 Certificate of Significance  
\$100.00 Certificate of Non-Significance

RECEIVED waived

### TIME SCHEDULE

Within ten (10) business days of receipt of a COMPLETED application, the staff shall make an initial determination of Significance or Non-Significance and will notify the owner, the Building Commissioner, the Town Clerk, and the Planning Director. Within twenty (20) business days of an initial determination, if the building is found significant, the Commission shall review the application at a Public Hearing. Failure to complete this form accurately will require a new application.

### V. SIGNATURES:

OWNER OF RECORD School Committee Signature Page Attached DATE \_\_\_\_\_

Town of Brookline Building Department  
333 Washington Street Brookline, Massachusetts 02445  
617.730.2100

Building Permit Application  
\*PLEASE PRINT LEGIBLY\*

Job Address: 115 Greenough St. Submittal Date: \_\_\_\_\_  
Existing Use: School Proposed Use: School

Description of work: New HS Wing & Tear Down of Existing  
\_\_\_\_\_  
\_\_\_\_\_

Total Estimated Value of Work: 30,000,000 Permit Fee: waived  
Structure: \_\_\_\_\_ Plumb: \_\_\_\_\_ Wire: \_\_\_\_\_ HVAC: \_\_\_\_\_

\* Subject to Final Cost Affidavit\*

Property Owner: Town of Brookline of Brookline Are you a Lessee? \_\_\_\_\_  
Address: 333 Washington St Bldg Dept. Phone No: 617-264-6449  
Ray Masake - PM Zip Code: 02445 Email: r.masake@brookline.ma.gov

Construction Supervisor: \_\_\_\_\_ Cell No: \_\_\_\_\_  
Address: \_\_\_\_\_ Phone No: \_\_\_\_\_  
Zip Code: \_\_\_\_\_ Email: \_\_\_\_\_  
CSL No: \_\_\_\_\_ Type: \_\_\_\_\_ Expiration: \_\_\_\_\_  
H.I.C. Reg. No: \_\_\_\_\_ Expiration: \_\_\_\_\_

Architect/Engineer: \_\_\_\_\_ Cell No: \_\_\_\_\_  
Address: \_\_\_\_\_ Phone No: \_\_\_\_\_  
Zip Code: \_\_\_\_\_ Email: \_\_\_\_\_

Debris Disposal Facility as approved by Brookline DPW: \_\_\_\_\_  
DIGSAFE Case No \_\_\_\_\_

"By signing this application I do hereby certify that I am the owner of record of the above captioned property and I have authorized the work described in this application. I hereby authorize the people named in this application to act as my agents in matters concerning this described work. I hereby certify under the pains and penalties of perjury that all statements made herein are true and accurate."

Property Owner's Signature: \_\_\_\_\_ Date: \_\_\_\_\_  
Property Owner's Name (please print) School Committee Signature Ray Attal

Agent/Const. Super. Signature: \_\_\_\_\_ Date: \_\_\_\_\_  
Agent/Const. Super. Name (please print) \_\_\_\_\_

School Committee Signature Page for Preservation Commission Application for Demolition Certificate

**School Committee**

\_\_\_\_\_

\_\_\_\_\_

\_\_\_\_\_

\_\_\_\_\_

\_\_\_\_\_

\_\_\_\_\_

\_\_\_\_\_

\_\_\_\_\_

\_\_\_\_\_

\_\_\_\_\_

WILLIAM RAWN ASSOCIATES | Architects, Inc.

10 Post Office Sq.  
Suite 1010  
Boston, MA 02109  
t. 617.423.3470  
www.rawnarch.com

February 28, 2018

Mr. Ray Masak  
Project Manager  
Town of Brookline Building Department  
Brookline Town Hall  
333 Washington Street  
3<sup>rd</sup> Floor  
Brookline, MA 02445

**RE: Brookline High School Expansion: STEM Wing Demolition Permit Application (Project C)**

Dear Ray,

In accordance with Town of Brookline Article 5.3 Demolition By-Law Section 5.3.4 we have prepared the following for inclusion with the Demolition Permit Application for the STEM Wing addition to the Brookline High School Building on Greenough Street.

**Address of the building to be demolished:**

Roberts Wing\*  
115 Greenough Street  
Brookline, MA 02445

*\*See attached plan and photographs of the main high school building indicating the portion of the building to be demolished.*

**Owner's Name, Address, and Phone Number:**

Town of Brookline  
Brookline Town Hall  
333 Washington Street, Brookline, MA 02445  
617-730-2000

**Description of the type of building:**

Constructed in 1937, the Roberts Wing portion of the Main Building at Brookline High School is located on the corner of Greenough and Tappan Streets. The Roberts Wing is three stories above grade and a below grade basement. General use classrooms and administration offices occupy the three floors. Mechanical rooms, a fire service room, and storage spaces occupy the basement level. The structure of the building is wood-framed building with reinforced concrete slabs at the central corridors, supported by interior and perimeter unreinforced masonry bearing walls (thicknesses vary). The exterior envelope is composed primarily of masonry with limestone trim and wood sash windows. This Wing abuts the 1922 Cafeteria/Auditorium to the west and connects via a corridor to the original section of the Greenough Building to the north.

**The Scope of the Proposed Demolition:**

The entirety of Roberts Wing\* is to be demolished.

*\*See attached plan of the main high school building indicating the portion of the building to be demolished.*

Sincerely,

A handwritten signature in black ink, appearing to read 'AJ' followed by a stylized flourish.

**Andrew Jonic, AIA, LEED AP BD+C**

Senior Associate

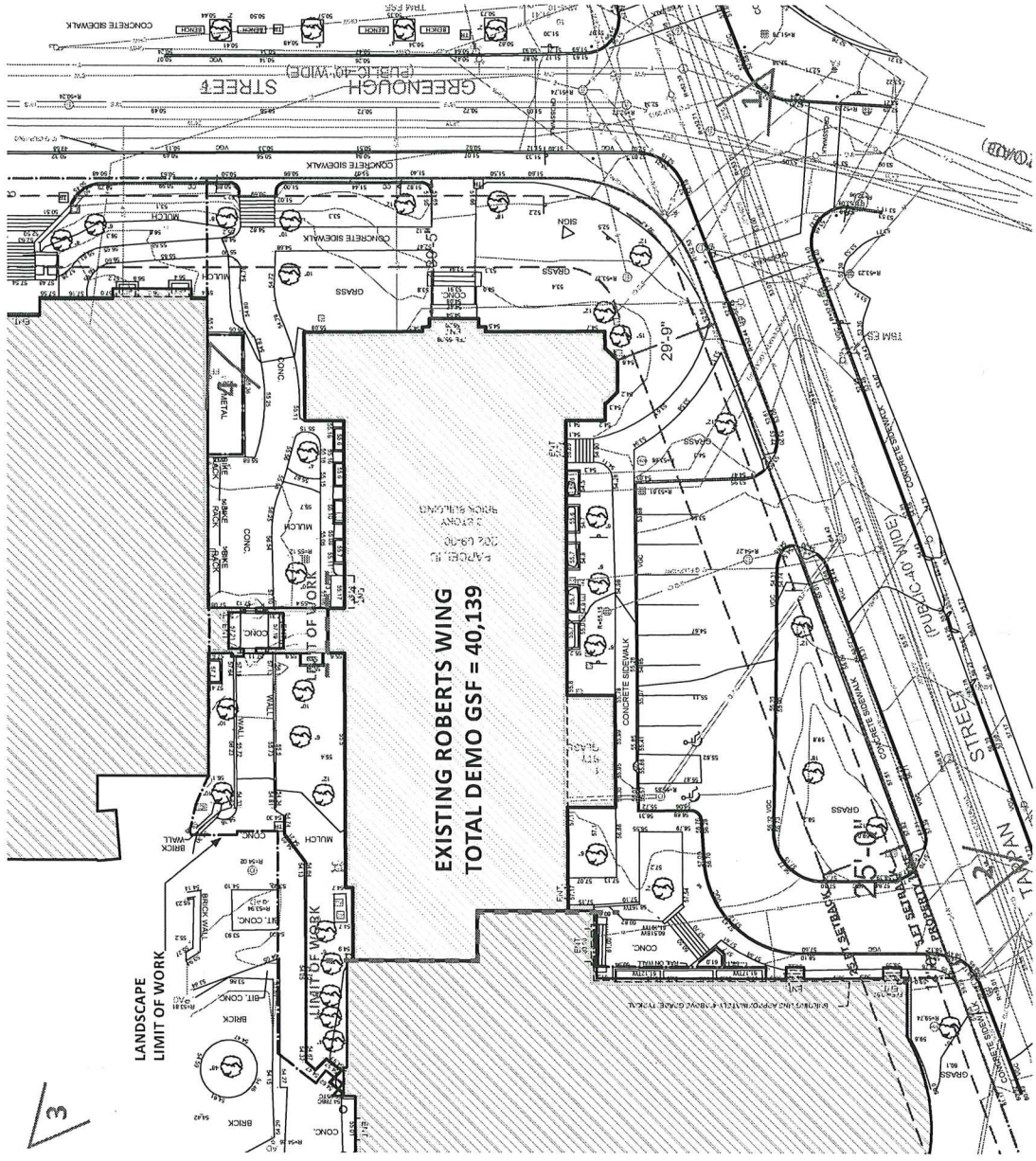
d. 617.598.3311

c. 617.548.4275



# STEM WING - DEMOLITION EXTENTS

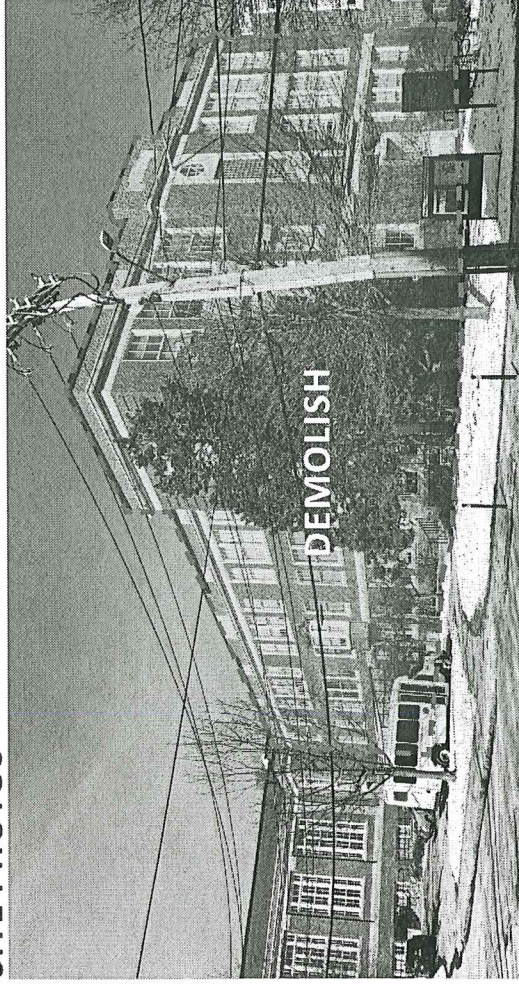
## SITE PLAN



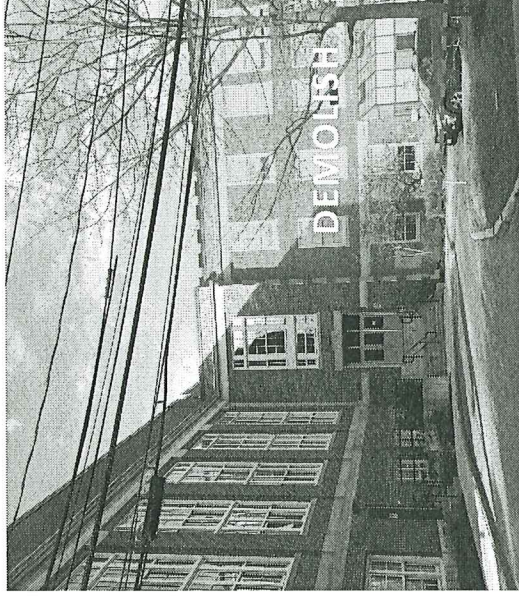


# STEM WING - DEMOLITION EXTENTS

## SITE PHOTOS



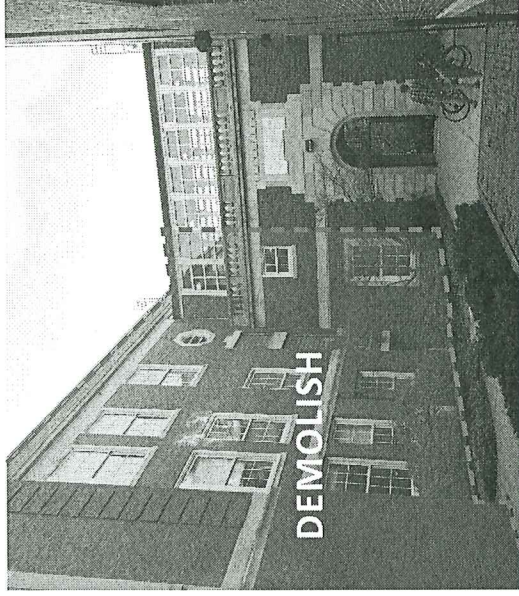
1. VIEW FROM TAPPAN & GREENOUGH INTERSECTION



2. VIEW FROM TAPPAN STREET



3. VIEW FROM QUAD  
BROOKLINE HIGH SCHOOL EXPANSION  
FEBRUARY 23, 2018



4. VIEW FROM PATH TO QUAD, BETWEEN ROBERTS WING AND MAIN BUILDING





WMA PROJECT # 21706

**TOWN OF BROOKLINE  
BROOKLINE HIGH SCHOOL  
EXPANSION**

BROOKLINE, MA 02445

**PROJECT C: STEM WING**

**ARCHITECT**

WMA  
1000 State Street  
Brookline, Massachusetts 02109

**STRUCTURAL ENGINEER**

WMA  
1000 State Street  
Brookline, Massachusetts 02109

**MECHANICAL ENGINEER**

WMA  
1000 State Street  
Brookline, Massachusetts 02109

**ELECTRICAL ENGINEER**

WMA  
1000 State Street  
Brookline, Massachusetts 02109

**PLUMBING ENGINEER**

WMA  
1000 State Street  
Brookline, Massachusetts 02109

**ACQUISITION**

WMA  
1000 State Street  
Brookline, Massachusetts 02109

**CIVIL ENGINEER**

WMA  
1000 State Street  
Brookline, Massachusetts 02109

**LANDSCAPE ARCHITECT**

WMA  
1000 State Street  
Brookline, Massachusetts 02109

**COST ESTIMATOR**

WMA  
1000 State Street  
Brookline, Massachusetts 02109

**ARCHITECTURAL CONSULTANT**

WMA  
1000 State Street  
Brookline, Massachusetts 02109

**GEOTECHNICAL ENGINEER**

WMA  
1000 State Street  
Brookline, Massachusetts 02109

**ENVIRONMENTAL ENGINEER**

WMA  
1000 State Street  
Brookline, Massachusetts 02109

**PLUMBING ENGINEER**

WMA  
1000 State Street  
Brookline, Massachusetts 02109

**ELECTRICAL ENGINEER**

WMA  
1000 State Street  
Brookline, Massachusetts 02109

**MECHANICAL ENGINEER**

WMA  
1000 State Street  
Brookline, Massachusetts 02109

**PLUMBING ENGINEER**

WMA  
1000 State Street  
Brookline, Massachusetts 02109

**ELECTRICAL ENGINEER**

WMA  
1000 State Street  
Brookline, Massachusetts 02109

**MECHANICAL ENGINEER**

WMA  
1000 State Street  
Brookline, Massachusetts 02109

**PLUMBING ENGINEER**

WMA  
1000 State Street  
Brookline, Massachusetts 02109

**ELECTRICAL ENGINEER**

WMA  
1000 State Street  
Brookline, Massachusetts 02109

**MECHANICAL ENGINEER**

WMA  
1000 State Street  
Brookline, Massachusetts 02109

**PLUMBING ENGINEER**

WMA  
1000 State Street  
Brookline, Massachusetts 02109

**ELECTRICAL ENGINEER**

WMA  
1000 State Street  
Brookline, Massachusetts 02109

**MECHANICAL ENGINEER**

WMA  
1000 State Street  
Brookline, Massachusetts 02109

**PLUMBING ENGINEER**

WMA  
1000 State Street  
Brookline, Massachusetts 02109

**ELECTRICAL ENGINEER**

WMA  
1000 State Street  
Brookline, Massachusetts 02109

**MECHANICAL ENGINEER**

WMA  
1000 State Street  
Brookline, Massachusetts 02109

**PLUMBING ENGINEER**

WMA  
1000 State Street  
Brookline, Massachusetts 02109

**ELECTRICAL ENGINEER**

WMA  
1000 State Street  
Brookline, Massachusetts 02109

**MECHANICAL ENGINEER**

WMA  
1000 State Street  
Brookline, Massachusetts 02109

**PLUMBING ENGINEER**

WMA  
1000 State Street  
Brookline, Massachusetts 02109

**ELECTRICAL ENGINEER**

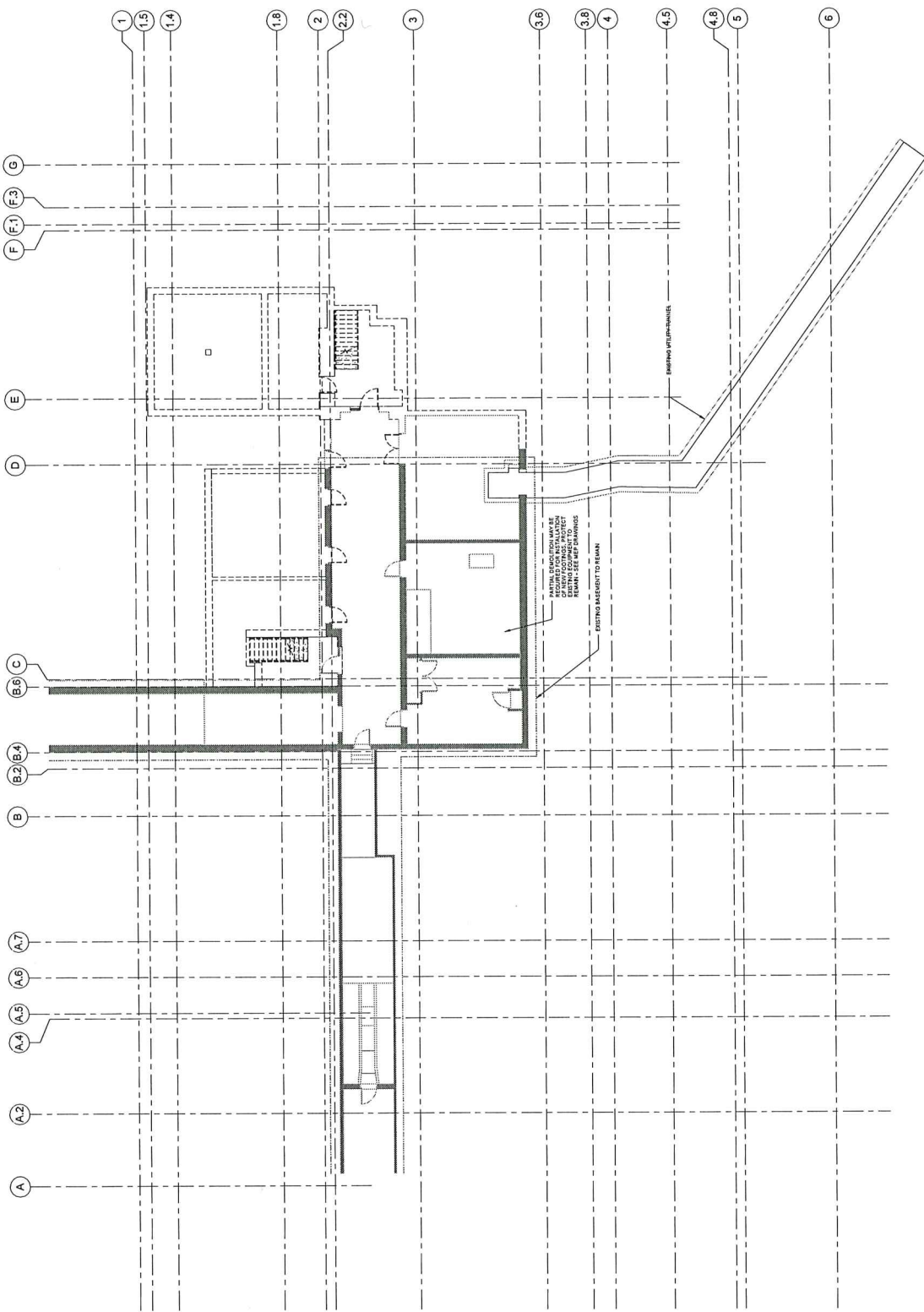
WMA  
1000 State Street  
Brookline, Massachusetts 02109

**MECHANICAL ENGINEER**

WMA  
1000 State Street  
Brookline, Massachusetts 02109

**PLUMBING ENGINEER**

WMA  
1000 State Street  
Brookline, Massachusetts 02109



**1 DEMOLITION PLAN - BASEMENT**  
1/8" = 1'-0"

**KEY**  
--- EXISTING WALLS TO BE DEMOLISHED  
--- EXISTING WALLS TO REMAIN  
--- EXISTING WALLS TO BE RETAINED

**PROJECT C: STEM WING**

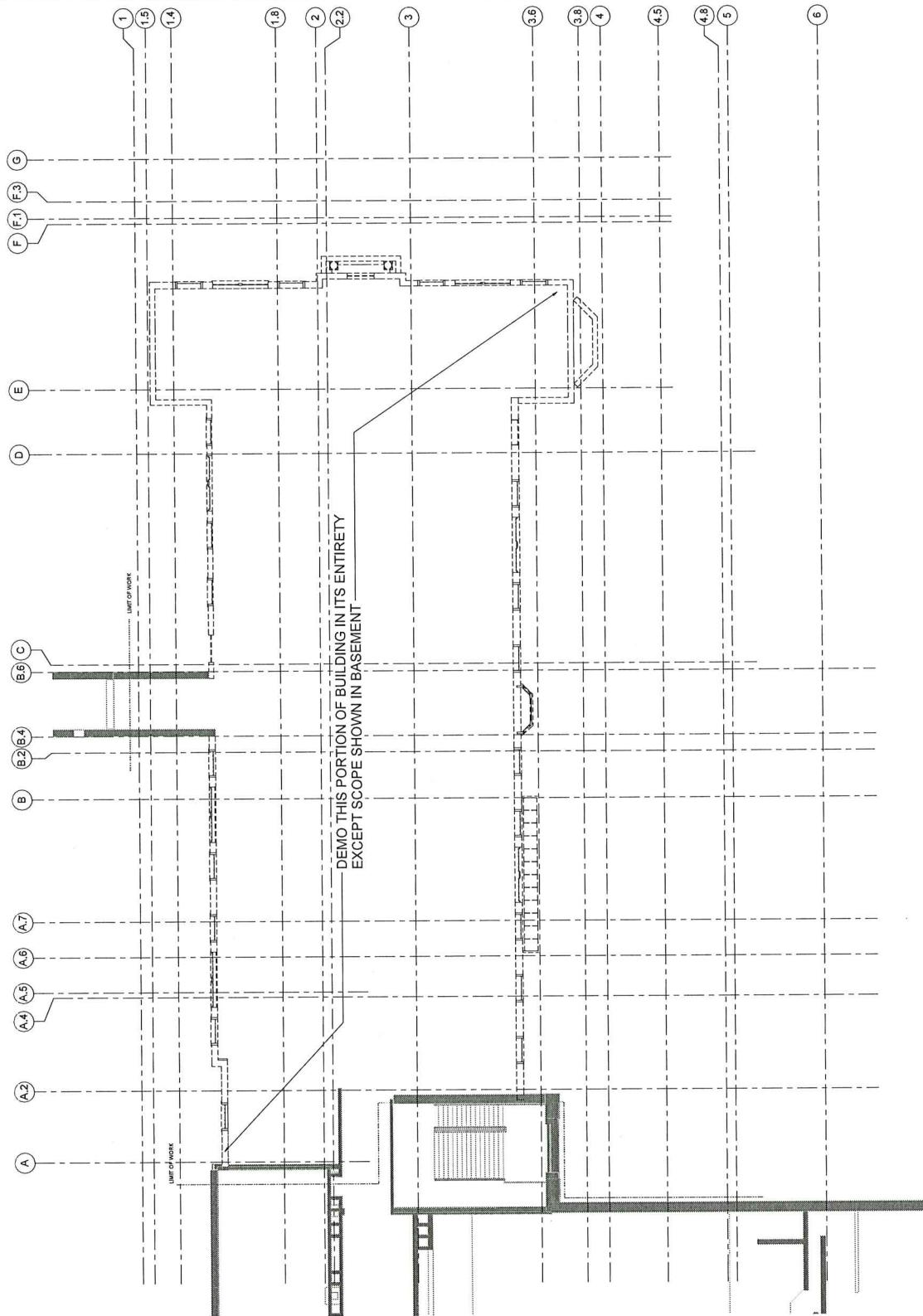
**SCHEMATIC DESIGN**

**DEMOLITION PLAN - BASEMENT**

**A0-D0-C**




1 DEMOLITION PLAN - LEVEL 1  
1/8" = 1'-0"



----- DEMO THIS PORTION OF BUILDING IN ITS ENTIRETY -----  
 ----- EXCEPT SCOPE SHOWN IN BASEMENT -----

**KEY**

--- EXISTING WALLS TO BE DEMOLISHED

 EXISTING WALLS TO REMAIN

1 DEMOLITION PLAN - LEVEL 2  
1/8" = 1'-0"

A0-D2-C

SCHEMATIC DESIGN

PRO

STEM WING



---

COLLISION PLAN - I EVER

— 222 —

<p> <i>Author</i> </p>	<p> <i>Author</i> </p>
------------------------	------------------------

IV: Checkoff

continued

0107201

NUMBER:

0-125-0

111

\_\_\_\_\_

---



WRA PROJECT # 21706

# TOWN OF BROOKLINE BROOKLINE HIGH SCHOOL EXPANSION

BROOKLINE, MA 02445

## PROJECT C: STEM WING

ARCHITECT  
Wheeler Decker Architects, Inc.  
100 State Street, Suite 200  
Boston, MA 02109

ENGINEER  
Wheeler Decker Associates, Inc.  
100 State Street, Suite 200  
Boston, MA 02109

LANDSCAPE ARCHITECT  
Wheeler Decker Associates, Inc.  
100 State Street, Suite 200  
Boston, MA 02109

COST ESTIMATOR  
Wheeler Decker Associates, Inc.  
100 State Street, Suite 200  
Boston, MA 02109

PERFORMANCE CONSULTANT  
Wheeler Decker Associates, Inc.  
100 State Street, Suite 200  
Boston, MA 02109

STRUCTURAL ENGINEER  
Wheeler Decker Associates, Inc.  
100 State Street, Suite 200  
Boston, MA 02109

MECHANICAL ENGINEER  
Wheeler Decker Associates, Inc.  
100 State Street, Suite 200  
Boston, MA 02109

ELECTRICAL ENGINEER  
Wheeler Decker Associates, Inc.  
100 State Street, Suite 200  
Boston, MA 02109

PLUMBING ENGINEER  
Wheeler Decker Associates, Inc.  
100 State Street, Suite 200  
Boston, MA 02109

HEATING ENGINEER  
Wheeler Decker Associates, Inc.  
100 State Street, Suite 200  
Boston, MA 02109

ENVIRONMENTAL ENGINEER  
Wheeler Decker Associates, Inc.  
100 State Street, Suite 200  
Boston, MA 02109

TRANSPORTATION ENGINEER  
Wheeler Decker Associates, Inc.  
100 State Street, Suite 200  
Boston, MA 02109

TRAFFIC ENGINEER  
Wheeler Decker Associates, Inc.  
100 State Street, Suite 200  
Boston, MA 02109

PAVEMENT ENGINEER  
Wheeler Decker Associates, Inc.  
100 State Street, Suite 200  
Boston, MA 02109

WATER ENGINEER  
Wheeler Decker Associates, Inc.  
100 State Street, Suite 200  
Boston, MA 02109

SEWER ENGINEER  
Wheeler Decker Associates, Inc.  
100 State Street, Suite 200  
Boston, MA 02109

GEOTECHNICAL ENGINEER  
Wheeler Decker Associates, Inc.  
100 State Street, Suite 200  
Boston, MA 02109

FOUNDATION ENGINEER  
Wheeler Decker Associates, Inc.  
100 State Street, Suite 200  
Boston, MA 02109

ROOFING ENGINEER  
Wheeler Decker Associates, Inc.  
100 State Street, Suite 200  
Boston, MA 02109

MECHANICAL INSULATION ENGINEER  
Wheeler Decker Associates, Inc.  
100 State Street, Suite 200  
Boston, MA 02109

ELECTRICAL INSULATION ENGINEER  
Wheeler Decker Associates, Inc.  
100 State Street, Suite 200  
Boston, MA 02109

PLUMBING INSULATION ENGINEER  
Wheeler Decker Associates, Inc.  
100 State Street, Suite 200  
Boston, MA 02109

HEATING INSULATION ENGINEER  
Wheeler Decker Associates, Inc.  
100 State Street, Suite 200  
Boston, MA 02109

ENVIRONMENTAL INSULATION ENGINEER  
Wheeler Decker Associates, Inc.  
100 State Street, Suite 200  
Boston, MA 02109

TRANSPORTATION INSULATION ENGINEER  
Wheeler Decker Associates, Inc.  
100 State Street, Suite 200  
Boston, MA 02109

TRAFFIC INSULATION ENGINEER  
Wheeler Decker Associates, Inc.  
100 State Street, Suite 200  
Boston, MA 02109

PAVEMENT INSULATION ENGINEER  
Wheeler Decker Associates, Inc.  
100 State Street, Suite 200  
Boston, MA 02109

WATER INSULATION ENGINEER  
Wheeler Decker Associates, Inc.  
100 State Street, Suite 200  
Boston, MA 02109

SEWER INSULATION ENGINEER  
Wheeler Decker Associates, Inc.  
100 State Street, Suite 200  
Boston, MA 02109

GEOTECHNICAL INSULATION ENGINEER  
Wheeler Decker Associates, Inc.  
100 State Street, Suite 200  
Boston, MA 02109

FOUNDATION INSULATION ENGINEER  
Wheeler Decker Associates, Inc.  
100 State Street, Suite 200  
Boston, MA 02109

ROOFING INSULATION ENGINEER  
Wheeler Decker Associates, Inc.  
100 State Street, Suite 200  
Boston, MA 02109

MECHANICAL INSULATION ENGINEER  
Wheeler Decker Associates, Inc.  
100 State Street, Suite 200  
Boston, MA 02109

ELECTRICAL INSULATION ENGINEER  
Wheeler Decker Associates, Inc.  
100 State Street, Suite 200  
Boston, MA 02109

PLUMBING INSULATION ENGINEER  
Wheeler Decker Associates, Inc.  
100 State Street, Suite 200  
Boston, MA 02109

HEATING INSULATION ENGINEER  
Wheeler Decker Associates, Inc.  
100 State Street, Suite 200  
Boston, MA 02109

ENVIRONMENTAL INSULATION ENGINEER  
Wheeler Decker Associates, Inc.  
100 State Street, Suite 200  
Boston, MA 02109

TRANSPORTATION INSULATION ENGINEER  
Wheeler Decker Associates, Inc.  
100 State Street, Suite 200  
Boston, MA 02109

TRAFFIC INSULATION ENGINEER  
Wheeler Decker Associates, Inc.  
100 State Street, Suite 200  
Boston, MA 02109

PAVEMENT INSULATION ENGINEER  
Wheeler Decker Associates, Inc.  
100 State Street, Suite 200  
Boston, MA 02109

WATER INSULATION ENGINEER  
Wheeler Decker Associates, Inc.  
100 State Street, Suite 200  
Boston, MA 02109

SEWER INSULATION ENGINEER  
Wheeler Decker Associates, Inc.  
100 State Street, Suite 200  
Boston, MA 02109

GEOTECHNICAL INSULATION ENGINEER  
Wheeler Decker Associates, Inc.  
100 State Street, Suite 200  
Boston, MA 02109

FOUNDATION INSULATION ENGINEER  
Wheeler Decker Associates, Inc.  
100 State Street, Suite 200  
Boston, MA 02109

ROOFING INSULATION ENGINEER  
Wheeler Decker Associates, Inc.  
100 State Street, Suite 200  
Boston, MA 02109

MECHANICAL INSULATION ENGINEER  
Wheeler Decker Associates, Inc.  
100 State Street, Suite 200  
Boston, MA 02109

ELECTRICAL INSULATION ENGINEER  
Wheeler Decker Associates, Inc.  
100 State Street, Suite 200  
Boston, MA 02109

PLUMBING INSULATION ENGINEER  
Wheeler Decker Associates, Inc.  
100 State Street, Suite 200  
Boston, MA 02109

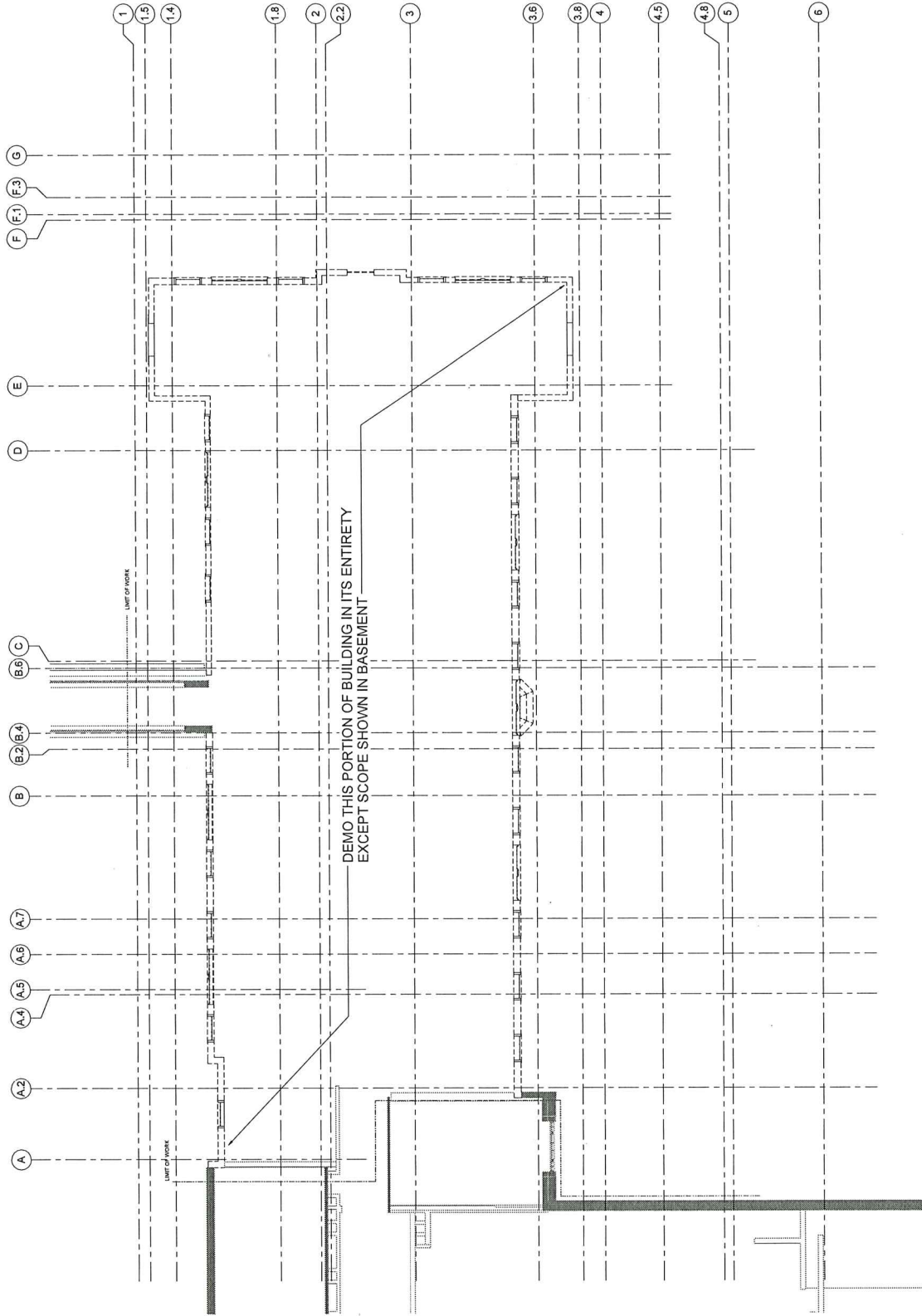
HEATING INSULATION ENGINEER  
Wheeler Decker Associates, Inc.  
100 State Street, Suite 200  
Boston, MA 02109

ENVIRONMENTAL INSULATION ENGINEER  
Wheeler Decker Associates, Inc.  
100 State Street, Suite 200  
Boston, MA 02109

TRANSPORTATION INSULATION ENGINEER  
Wheeler Decker Associates, Inc.  
100 State Street, Suite 200  
Boston, MA 02109

TRAFFIC INSULATION ENGINEER  
Wheeler Decker Associates, Inc.  
100 State Street, Suite 200  
Boston, MA 02109

PAVEMENT INSULATION ENGINEER  
Wheeler Decker Associates, Inc.  
100 State Street, Suite 200  
Boston, MA 02109



**KEY**

- DEMOLITION SCOPE
- EXISTING WALLS TO BE DEMOLISHED
- EXISTING WALLS TO REMAIN

1 DEMOLITION PLAN - LEVEL 3  
1" = 1'-0"

## SCHEMATIC DESIGN



DEMOLITION PLAN - LEVEL 3

DESIGNED BY: J. J. J.
CHECKED BY: J. J. J.
SCALE: As Shown
DATE: 02/20/2018

DRAWING NUMBER:  
**A0-D3-C**