

MSBA Enrollment Projection – Brookline

Historic Enrollment Data (DESE)

YEAR	PK	K	1	2	3	4	5	6	7	8	9	10	11	12	K-12	K-8	9-12
1993-94	17	469	493	511	470	507	512	437	410	409	399	423	432	398	5,870	4,218	1,652
1994-95	0	420	517	496	507	468	508	482	413	391	425	409	432	437	2,320	4,202	1,703
1995-96	0	423	462	530	498	487	474	523	462	422	409	459	421	423	5,993	4,281	1,712
1996-97	0	422	493	480	513	501	481	459	482	455	442	410	442	406	5,986	4,286	1,700
1997-98	0	424	478	510	490	488	506	465	423	476	449	438	414	438	5,999	4,260	1,739
1998-99	0	428	449	458	510	495	486	498	463	425	458	436	415	401	5,922	4,212	1,710
1999-00	0	407	445	468	458	487	498	485	482	466	430	470	454	411	5,961	4,196	1,765
2000-01	0	404	431	464	463	483	473	498	472	480	487	455	477	441	6,028	4,168	1,860
2001-02	36	402	423	437	465	463	458	460	467	456	487	500	429	468	5,915	4,031	1,884
2002-03	210	430	430	414	424	453	447	463	455	462	471	492	470	417	5,828	3,978	1,850
2003-04	207	406	439	432	411	418	446	437	464	448	474	492	491	453	5,811	3,901	1,910
2004-05	208	418	430	456	426	421	414	455	401	465	455	485	476	473	5,775	3,886	1,889
2005-06	242	484	427	437	465	423	417	413	432	398	465	465	470	470	5,766	3,896	1,870
2006-07	253	549	496	423	452	452	435	406	416	425	421	474	467	467	5,883	4,054	1,829
2007-08	260	495	527	514	438	449	448	408	394	425	432	443	456	477	5,906	4,098	1,808
2008-09	249	552	516	556	539	452	444	444	409	387	445	432	443	450	6,069	4,299	1,770
2009-10	255	596	556	516	544	539	449	435	443	395	409	466	427	437	6,212	4,473	1,739
2010-11	262	545	618	572	532	527	532	445	424	448	402	428	460	431	6,364	4,643	1,721
2011-12	277	602	550	658	567	532	538	516	437	425	458	421	432	459	6,595	4,825	1,770
2012-13	276	666	633	539	651	574	517	549	492	446	436	479	416	432	6,830	5,067	1,763
2013-14	259	631	676	618	539	656	562	519	533	493	466	445	475	403	7,016	5,227	1,789
2014-15	264	685	645	685	620	530	634	541	506	507	494	478	431	473	7,229	5,353	1,876
2015-16	257	633	696	621	704	598	553	610	543	507	500	507	480	446	7,398	5,465	1,933
2016-17	262	582	627	678	633	677	584	549	576	531	500	509	492	479	7,417	5,437	1,980
2017-18	257	609	566	631	691	621	660	585	550	568	531	510	497	506	7,525	5,481	2,044
2018-19	251	603	615	574	645	680	605	665	571	545	554	542	489	499	7,587	5,503	2,084
2019-20	274	600	614	613	573	625	658	582	617	561	521	557	512	474	7,507	5,443	2,064

MSBA Enrollment Projection – Brookline

Historic Birth Data (MA Department of Public Health)

Maternal Age	1989	1990	1991	1992	1993	1994	1995	1996	1997	1998	1999	2000	2001	2002	2003	2004	2005	2006	2007	2008	2009	2010	2011	2012	2013	2014	2015	2016
10-14 Yrs	0	0	0	0	0	0	0	0	0	0	0	0	0	0	0	0	0	0	0	0	0	0	0	0	0	0	0	0
15-19 Yrs	0	7	10	9	9	0	6	9	6	12	0	6	0	5	0	0	0	0	5	0	0	0	0	0	0	0	0	0
20-24 Yrs	39	32	24	44	48	36	23	29	32	18	27	15	14	28	24	18	25	23	20	13	18	23	16	16	7	14	0	0
25-29 Yrs	171	160	151	138	124	117	137	131	128	142	113	118	106	104	126	121	117	92	95	90	92	96	97	111	95	67	85	73
30-34 Yrs	243	271	246	231	269	250	251	260	255	284	242	278	267	292	338	319	264	324	303	295	295	324	318	318	346	297	263	260
35-39 Yrs	125	143	128	128	152	138	140	140	141	156	155	161	160	159	161	188	160	205	202	204	214	186	204	191	215	214	202	204
40-44 Yrs	37	36	46	33	23	41	42	34	32	41	45	35	46	52	40	40	43	42	37	58	51	55	44	48	47	56	43	47
Total Births	621	649	605	584	625	585	600	608	599	655	589	614	599	649	691	697	613	691	668	666	676	693	688	686	718	653	602	597

Female Population Data

Maternal Age	US Census Data			U Mass Donohue Institute					
	1990	2000	2010	2015	2020	2025	2030	2035	2040
10-14 Yrs	1,041	1,312	1,275	1,444	1,836	1,873	1,780	1,891	1,924
15-19 Yrs	1,396	1,382	1,468	1,523	1,698	2,106	2,049	1,946	2,089
20-24 Yrs	2,957	3,281	4,126	4,209	4,156	4,651	5,503	5,087	4,828
25-29 Yrs	3,739	4,044	3,940	4,312	4,392	4,226	4,777	5,468	5,062
30-34 Yrs	3,143	2,885	2,722	2,888	3,061	3,320	3,102	3,506	3,995
35-39 Yrs	2,525	2,379	2,224	2,440	2,748	2,927	3,245	2,995	3,378
40-44 Yrs	2,609	2,066	1,830	1,925	2,261	2,472	2,628	2,929	2,693
Total Females	30,648	31,275	32,278	33,937	36,156	38,551	41,043	42,578	43,726

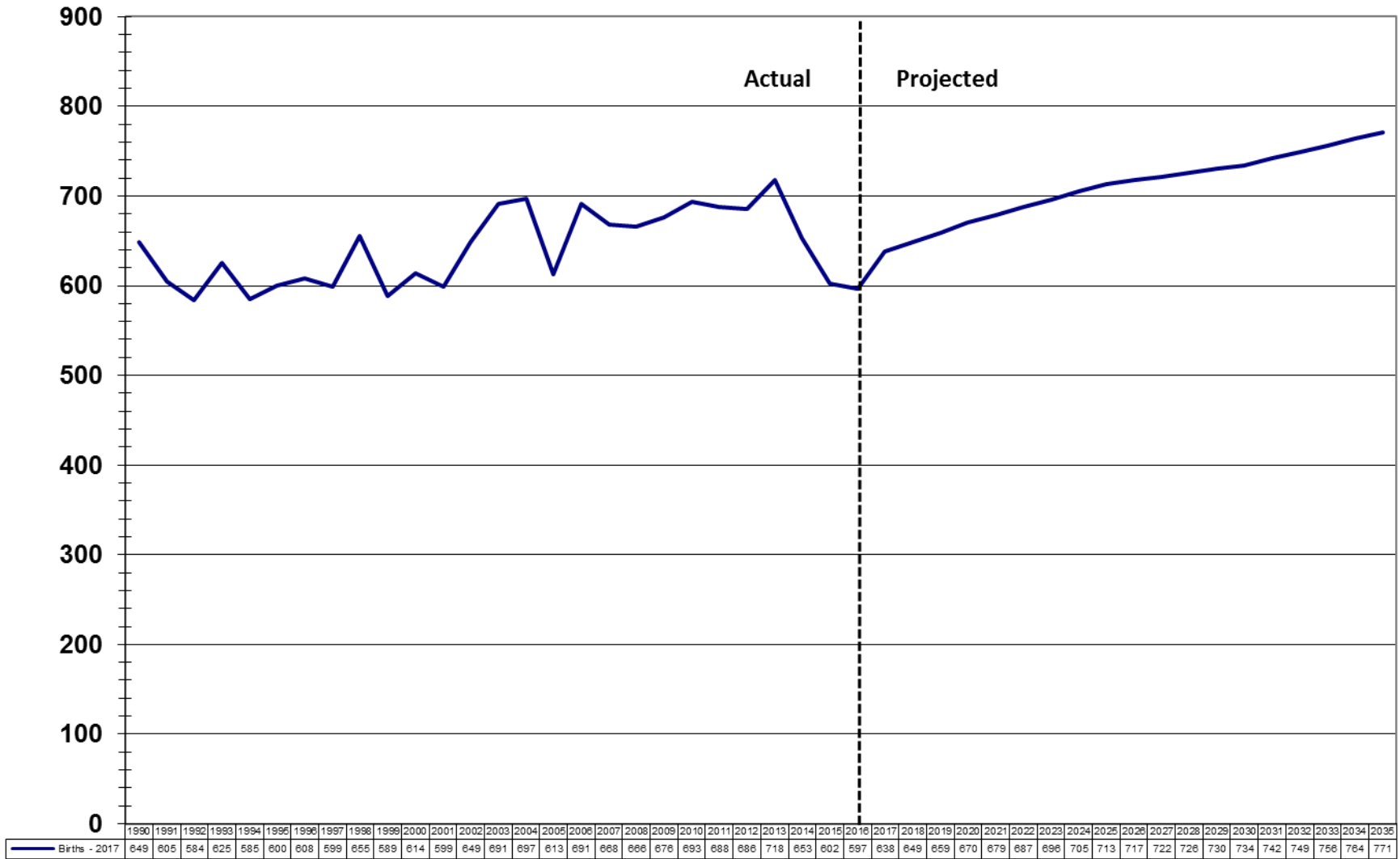
2014-2016 Avg Fertility Rate
0.00%
0.00%
0.11%
1.77%
9.61%
8.58%
2.55%
1.82%

Birth Projections

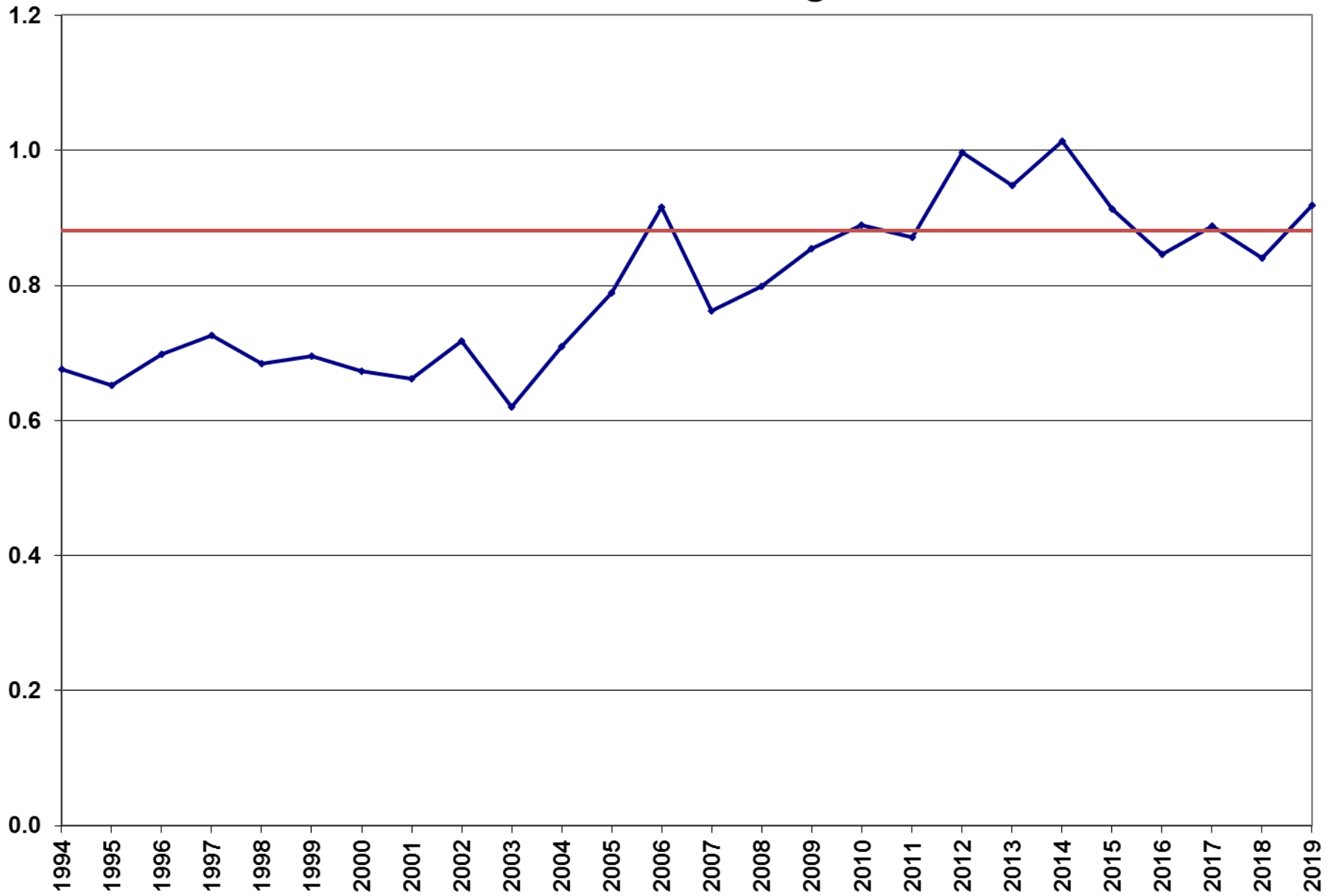
Maternal Age	2017	2018	2019	2020	2021	2022	2023	2024	2025	2026	2027	2028	2029	2030	2031	2032	2033	2034	2035
10-14 Yrs	0	0	0	0	0	0	0	0	0	0	0	0	0	0	0	0	0	0	0
15-19 Yrs	0	0	0	0	0	0	0	0	0	0	0	0	0	0	0	0	0	0	0
20-24 Yrs	5	5	5	5	5	5	5	5	5	5	6	6	6	6	6	6	6	6	6
25-29 Yrs	77	77	78	78	77	77	76	76	75	77	79	81	83	85	87	90	92	94	97
30-34 Yrs	284	287	291	294	299	304	309	314	319	315	311	306	302	298	306	314	321	329	337
35-39 Yrs	220	225	230	236	239	242	245	248	251	257	262	267	273	278	274	270	266	261	257
40-44 Yrs	52	54	56	58	59	60	61	62	63	64	65	65	66	67	68	70	72	73	75
Totals	638	649	659	670	679	687	696	705	713	717	722	726	730	734	742	749	756	764	771

MSBA Enrollment Projection – Brookline

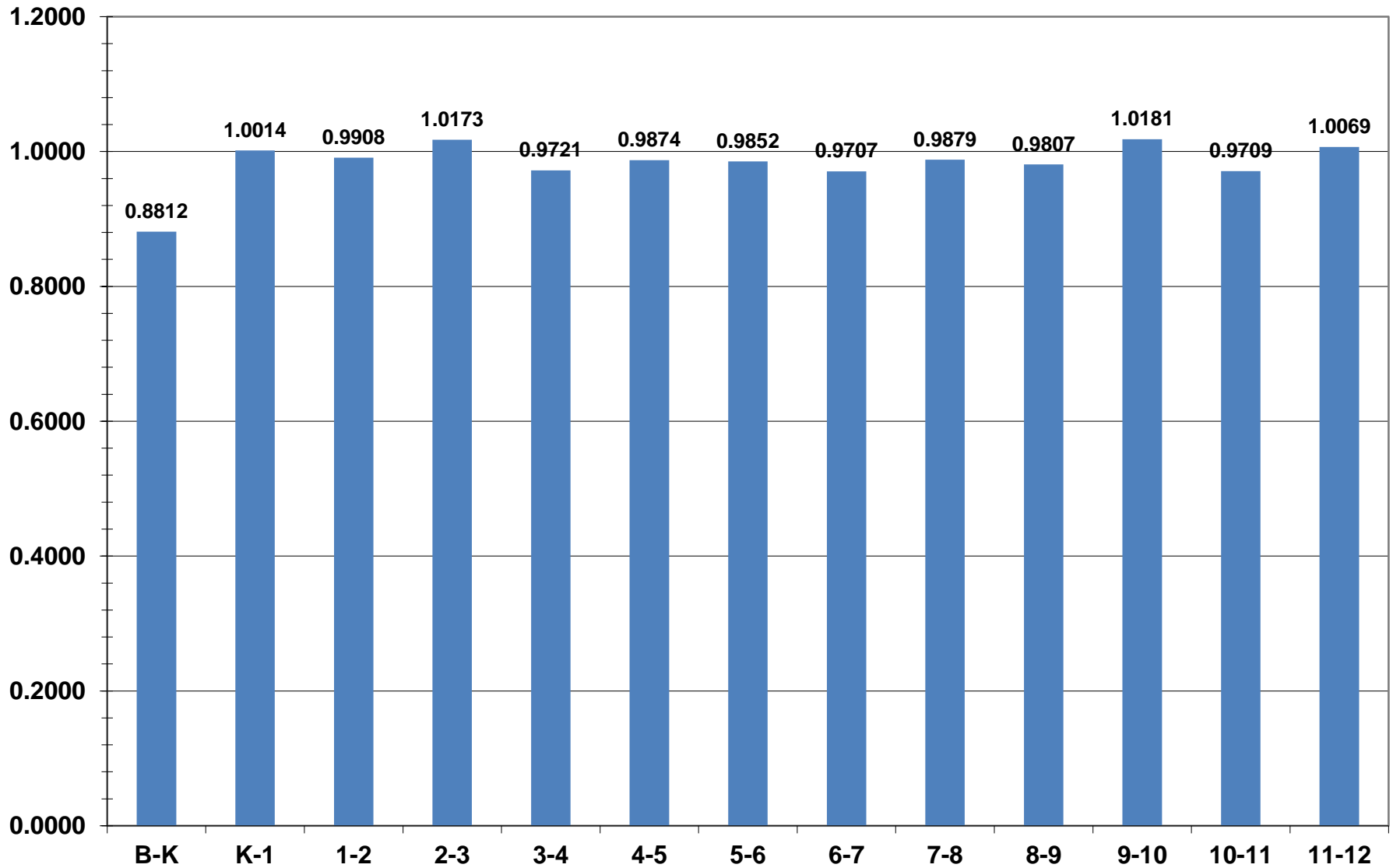
Brookline Births



Brookline Birth to Kindergarten Ratio



Brookline Grade-to-Grade Ratios - 5 Yr Average



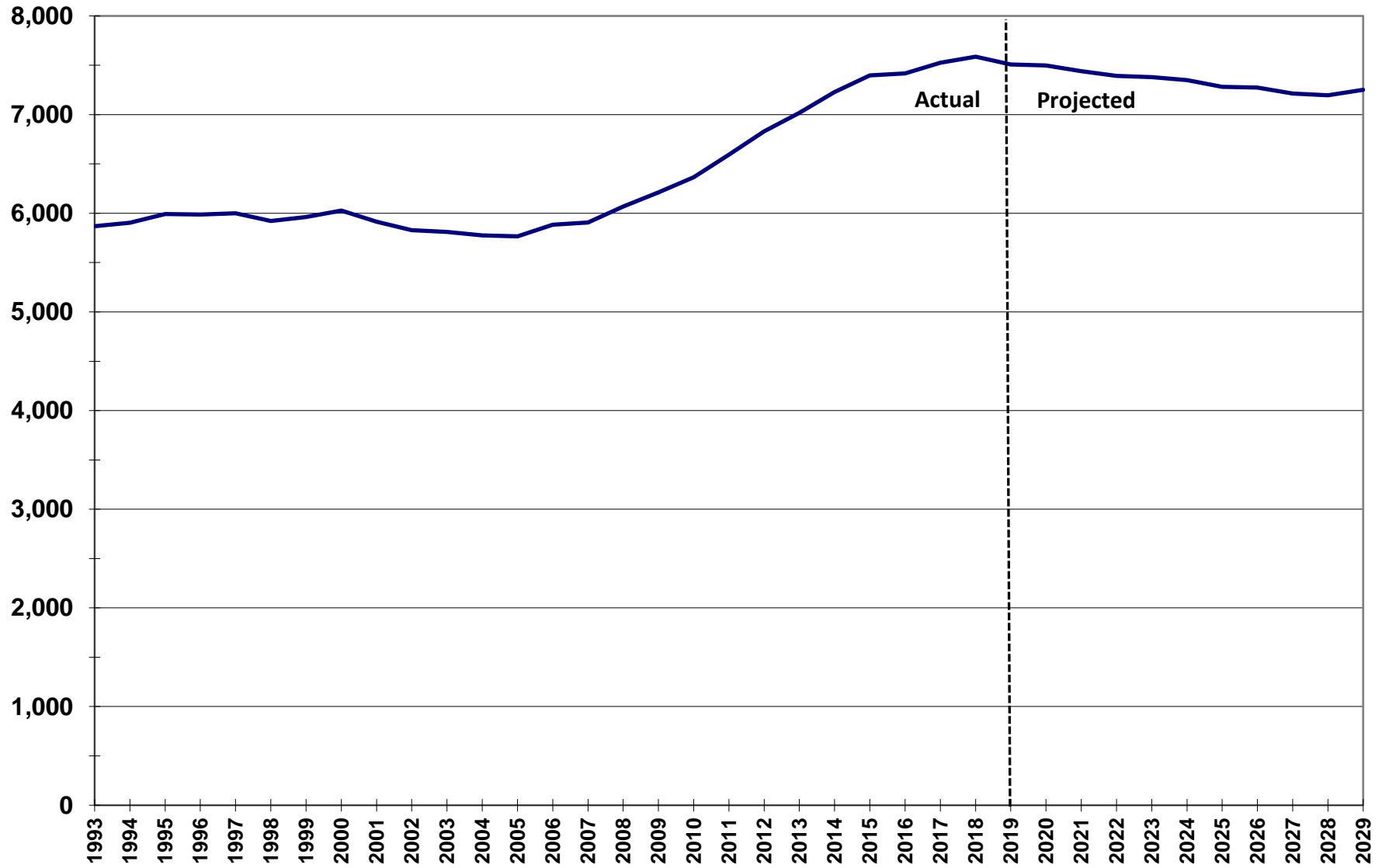
MSBA Enrollment Projection – Brookline

Base Enrollment Projections

YEAR	K	1	2	3	4	5	6	7	8	9	10	11	12	K-8	9-12	K-12
1993	469	493	511	470	507	512	437	410	409	399	423	432	398	4,218	1,652	5,870
1994	420	517	496	507	468	508	482	413	391	425	409	432	437	4,202	1,703	5,905
1995	423	462	530	498	487	474	523	462	422	409	459	421	423	4,281	1,712	5,993
1996	422	493	480	513	501	481	459	482	455	442	410	442	406	4,286	1,700	5,986
1997	424	478	510	490	488	506	465	423	476	449	438	414	438	4,260	1,739	5,999
1998	428	449	458	510	495	486	498	463	425	458	436	415	401	4,212	1,710	5,922
1999	407	445	468	458	487	498	485	482	466	430	470	454	411	4,196	1,765	5,961
2000	404	431	464	463	483	473	498	472	480	487	455	477	441	4,168	1,860	6,028
2001	402	423	437	465	463	458	460	467	456	487	500	429	468	4,031	1,884	5,915
2002	430	430	414	424	453	447	463	455	462	471	492	470	417	3,978	1,850	5,828
2003	406	439	432	411	418	446	437	464	448	474	492	491	453	3,901	1,910	5,811
2004	418	430	456	426	421	414	455	401	465	455	485	476	473	3,886	1,889	5,775
2005	484	427	437	465	423	417	413	432	398	465	465	470	470	3,896	1,870	5,766
2006	549	496	423	452	452	435	406	416	425	421	474	467	467	4,054	1,829	5,883
2007	495	527	514	438	449	448	408	394	425	432	443	456	477	4,098	1,808	5,906
2008	552	516	556	539	452	444	444	409	387	445	432	443	450	4,299	1,770	6,069
2009	596	556	516	544	539	449	435	443	395	409	466	427	437	4,473	1,739	6,212
2010	545	618	572	532	527	532	445	424	448	402	428	460	431	4,643	1,721	6,364
2011	602	550	658	567	532	538	516	437	425	458	421	432	459	4,825	1,770	6,595
2012	666	633	539	651	574	517	549	492	446	436	479	416	432	5,067	1,763	6,830
2013	631	676	618	539	656	562	519	533	493	466	445	475	403	5,227	1,789	7,016
2014	685	645	685	620	530	634	541	506	507	494	478	431	473	5,353	1,876	7,229
2015	633	696	621	704	598	553	610	543	507	500	507	480	446	5,465	1,933	7,398
2016	582	627	678	633	677	584	549	576	531	500	509	492	479	5,437	1,980	7,417
2017	609	566	631	691	621	660	585	550	568	531	510	497	506	5,481	2,044	7,525
2018	603	615	574	645	680	605	665	571	545	554	542	489	499	5,503	2,084	7,587
2019	600	614	613	573	625	658	582	617	561	521	557	512	474	5,443	2,064	7,507
2020	530	601	608	624	557	617	648	565	610	550	530	541	516	5,360	2,137	7,497
2021	526	531	595	619	606	550	608	629	558	598	560	515	545	5,223	2,217	7,441
2022	562	527	526	606	602	599	542	590	622	547	609	544	519	5,175	2,218	7,393
2023	572	563	522	535	589	594	590	526	583	610	557	591	548	5,074	2,305	7,379
2024	581	572	558	531	521	581	585	572	520	572	621	541	595	5,022	2,329	7,350
2025	590	582	567	568	516	514	573	568	565	510	582	603	545	5,044	2,239	7,283
2026	598	591	577	577	552	510	506	556	561	555	519	565	607	5,028	2,245	7,273
2027	606	599	586	587	561	545	502	492	549	550	565	504	569	5,025	2,188	7,213
2028	613	606	593	596	570	554	537	487	486	539	560	548	507	5,043	2,154	7,197
2029	621	614	601	604	579	563	546	521	482	476	548	544	552	5,130	2,121	7,250
10 yr avg	616	624	619	616	602	584	556	525	503	486	488	468	460	5,244	1,902	7,147
5 yr avg	605	624	623	649	640	612	598	571	542	521	525	494	481	5,466	2,021	7,487
2 yr avg	602	615	594	609	653	632	624	594	553	538	550	501	487	5,473	2,074	7,547
5 yr proj	554	559	562	583	575	588	595	577	578	575	575	546	544	5,171	2,241	7,412
10 yr proj	580	579	573	585	565	563	564	551	553	551	565	550	550	5,112	2,215	7,328

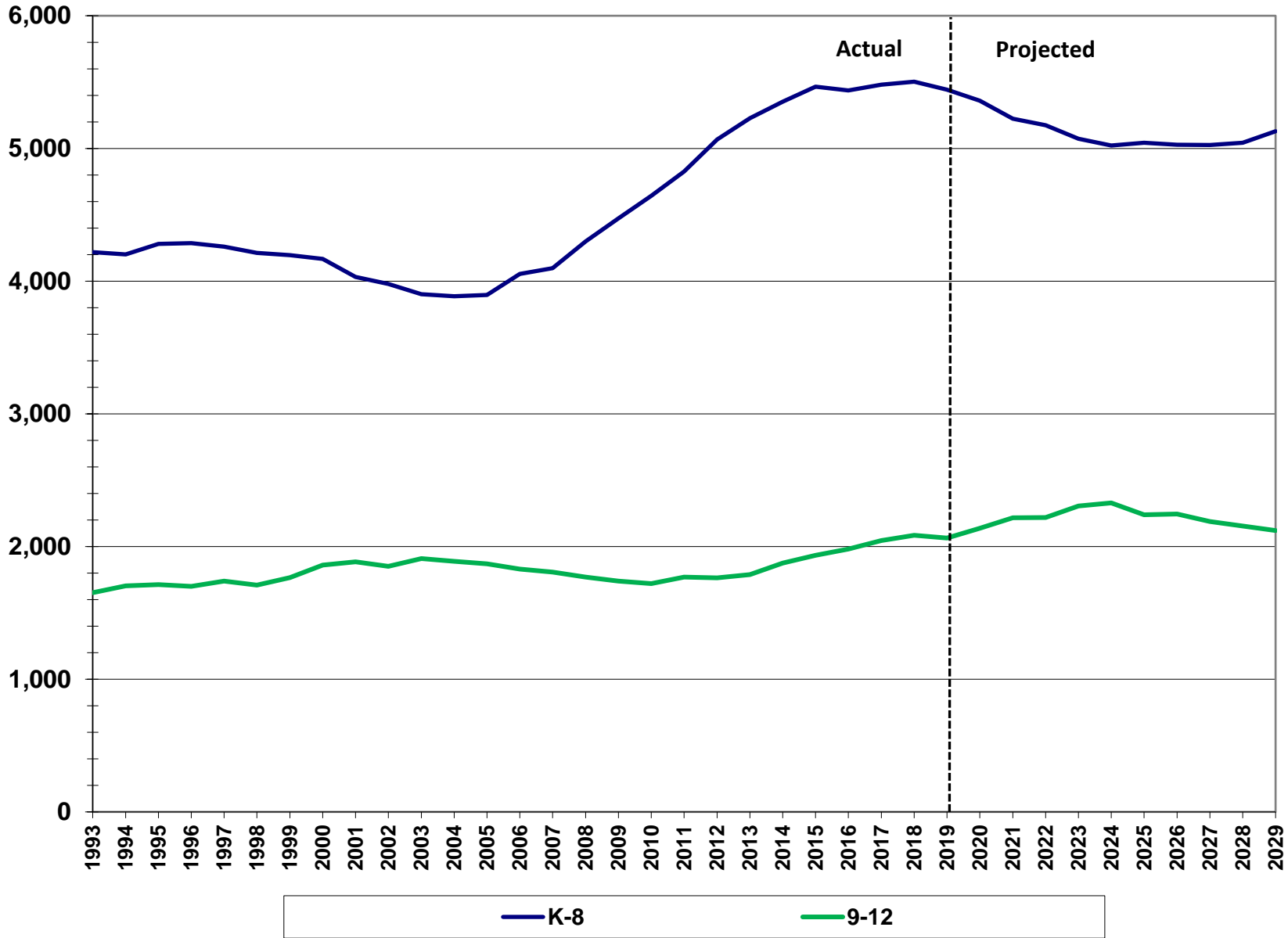
MSBA Enrollment Projection – Brookline

Brookline Total Enrollment



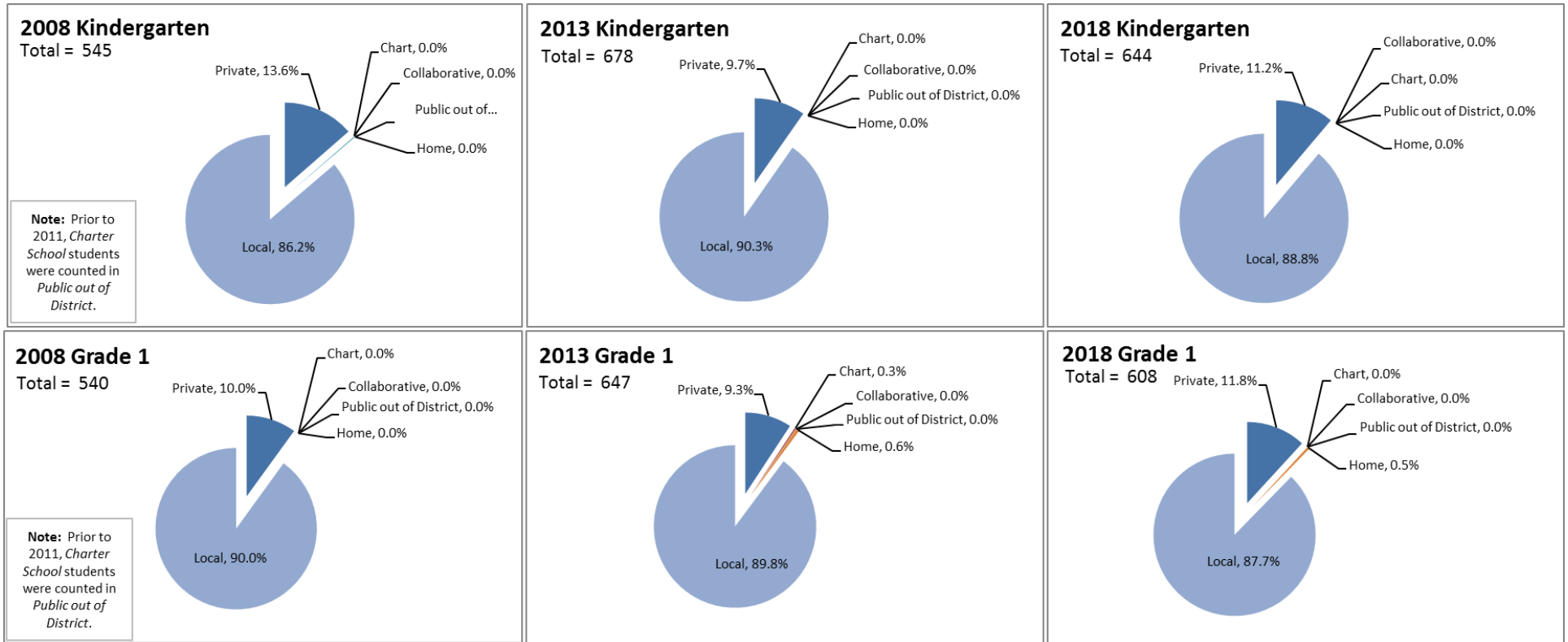
MSBA Enrollment Projection – Brookline

Brookline Enrollment by Grade Group



MSBA Enrollment Projection – Brookline

The following charts show the School Attending Children Profiles (indicating where all school-aged children that reside in the district attend school) at the typical transition grades for elementary school, middle school, and high school.

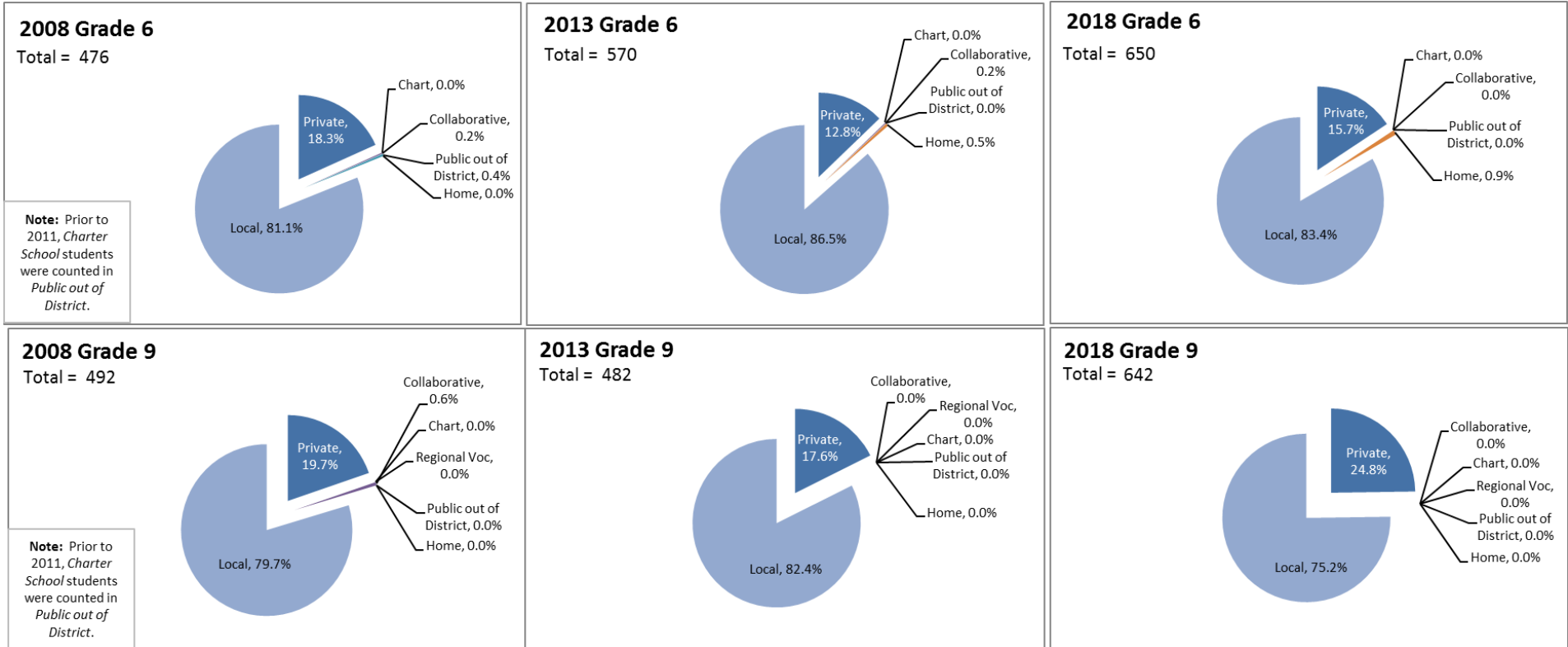


School Attending Children Profiles

Grades K and 1

These profiles show the enrollment of all full-time students whose parents or legal guardians are residents of the city or town.

MSBA Enrollment Projection – Brookline



School Attending Children Profiles

Grades 6 and 9

These profiles show the enrollment of all full-time students whose parents or legal guardians are residents of the city or town.