



Advisory Panel 4:
Public Health, Safety, & Logistics

Metrics Review
January 22, 2021

Community Benchmarks - Status

Benchmark (each measured over prior 14 days)	Status 12/30/20	Status 1/6/21	Status 1/13/21	Status 1/20/21
Avg. daily new case count in Brookline = <10 per 100k people	23.8	25.4	27.3	27.4
Avg. daily new case count in Mass. = <10 per 100k people	58.3	61.1	78.0	75.5
Avg. test positivity rate in Brookline = <5.0%	2.16%	3.19%	2.79%	2.31%
Avg. test positivity rate in Massachusetts = <5.0%	6.51%	7.71%	7.99%	6.85%

Because at least two of these four thresholds have been exceeded, Panel 4 has advised PSB to make further enhancements to anti-transmission measures:

www.brookline.k12.ma.us/cms/lib/MA01907509/Centricity/Domain/62/PSB%20Advisory%20Panel%204%20-%20Statement%20of%20Recommendations%20for%20Times%20of%20Elevated%20Community%20Spread_12.11.20.pdf

Updated MA DPH Color Scale



Massachusetts Department of Public Health COVID-19 Dashboard - Thursday, November 12, 2020
Average Daily Incidence Rate per 100,000 Color Calculations

Incidence Rate Color Table

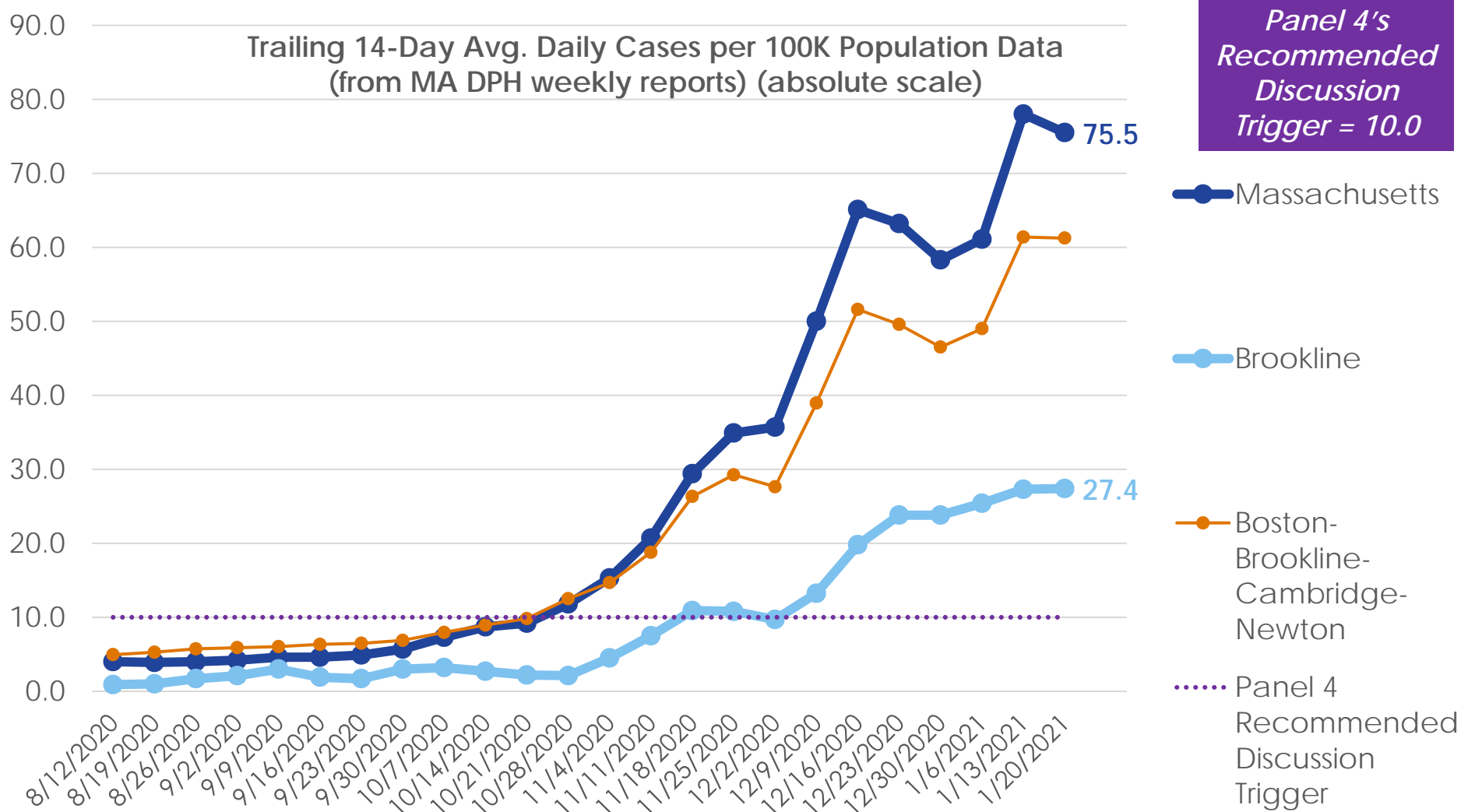
Group	Population		
	Under 10K	10K-50K	Over 50K
Grey	Less than or equal to 10 total cases	Less than or equal to 10 total cases	Less than or equal to 15 total cases
Green	Less than or equal to 15 total cases	<10 avg cases/100k AND >10 total cases	<10 avg cases/100k AND >15 total cases
Yellow	Less than or equal to 25 total cases	≥10 avg cases/100k OR ≥5% pos rate	≥10 avg cases/100k OR ≥ 4% pos rate
Red	More than 25 total cases	≥10 avg cases/100k AND ≥5% pos rate	≥10 avg cases/100k AND ≥4% pos rate

Brookline is here as of 1/20/2021 (yellow zone)

Brookline's population is ~60,000

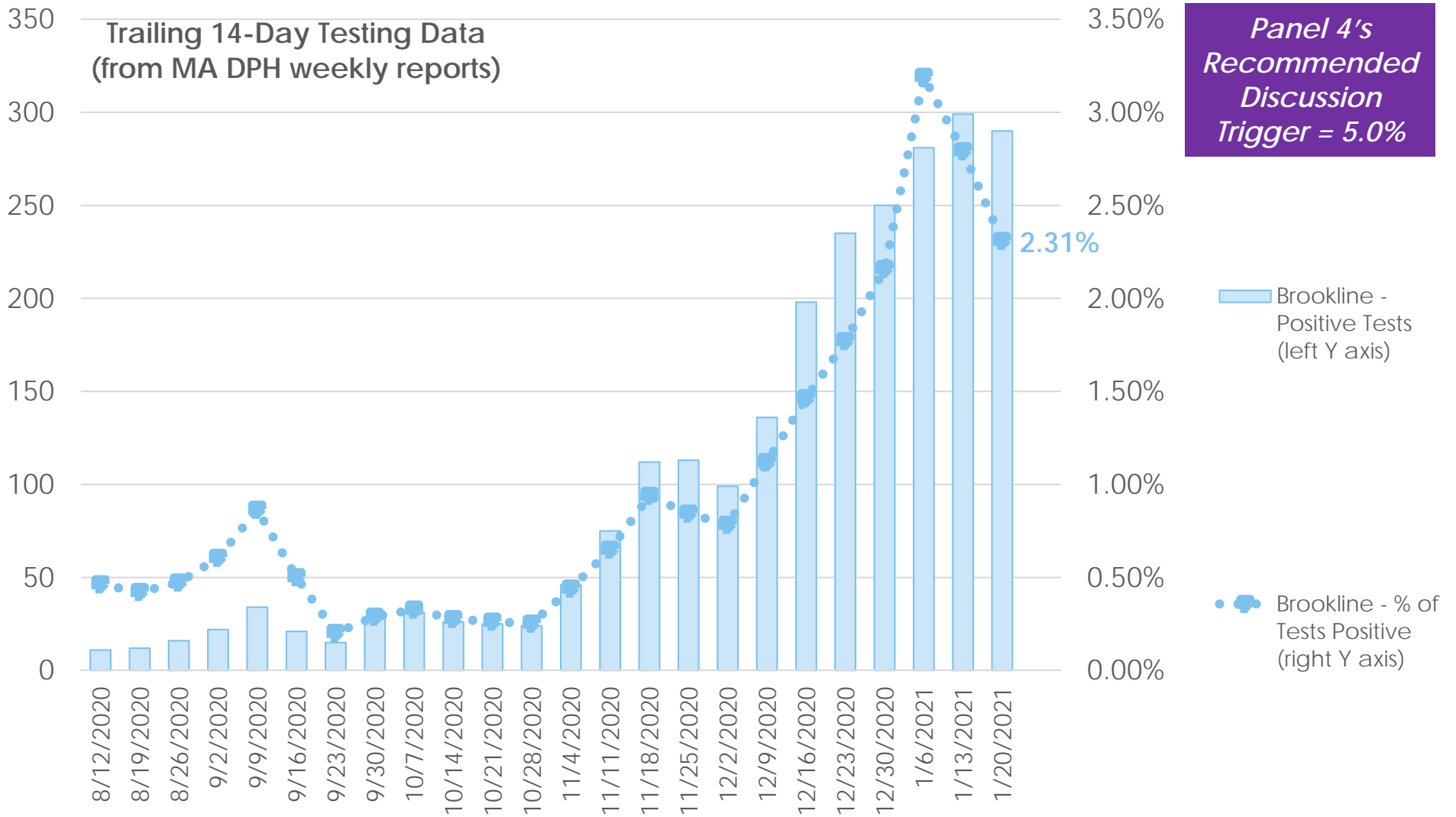
As of 11/5, DPH is using 2019 population estimates derived from a method developed by the University of Massachusetts Donahue Institute. The 2019 estimates are the most currently available data.

Community Benchmarks - Status

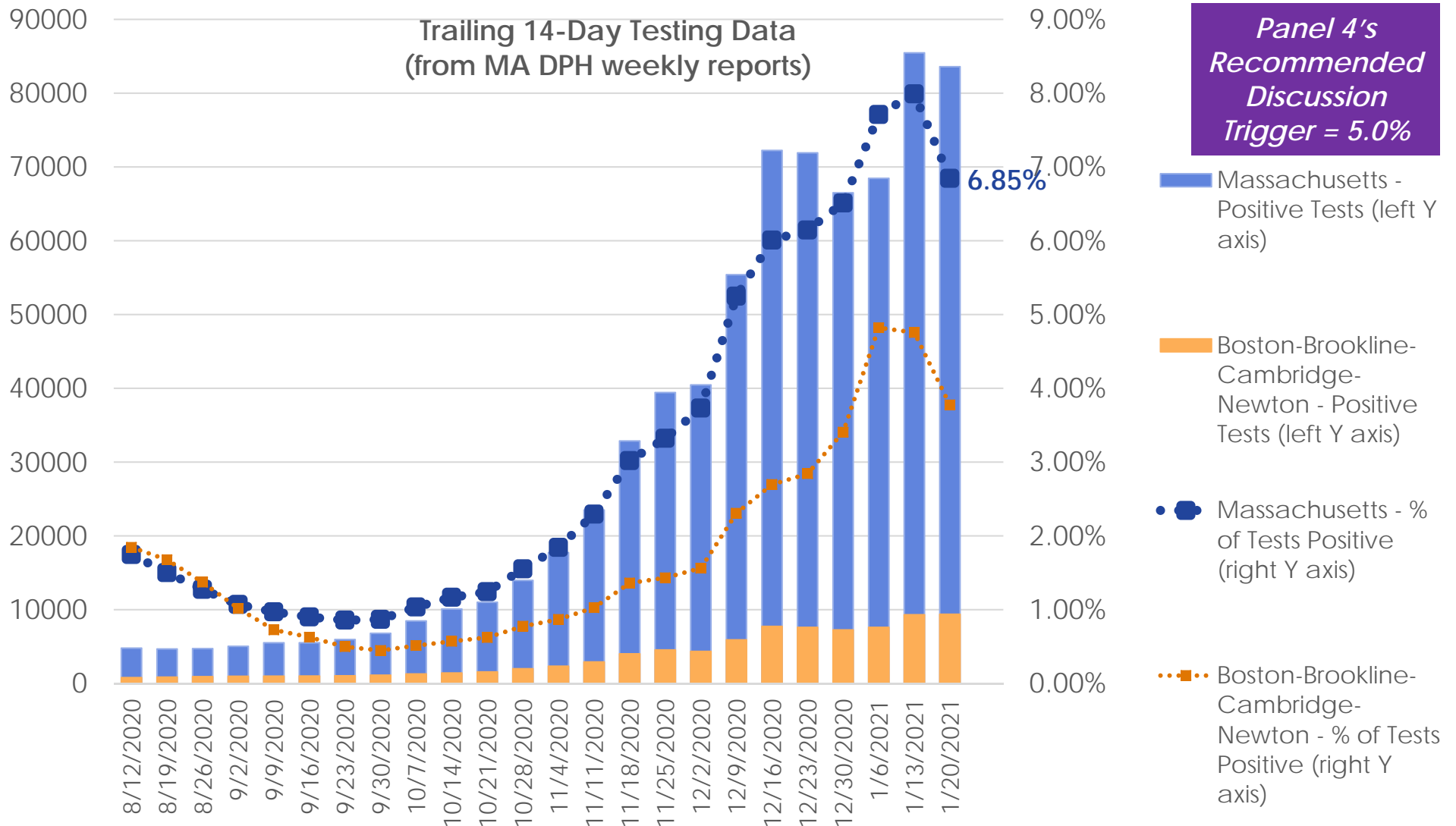


Data source: <https://www.mass.gov/info-details/covid-19-response-reporting# covid-19-weekly-public-health-report->

Community Benchmarks - Status



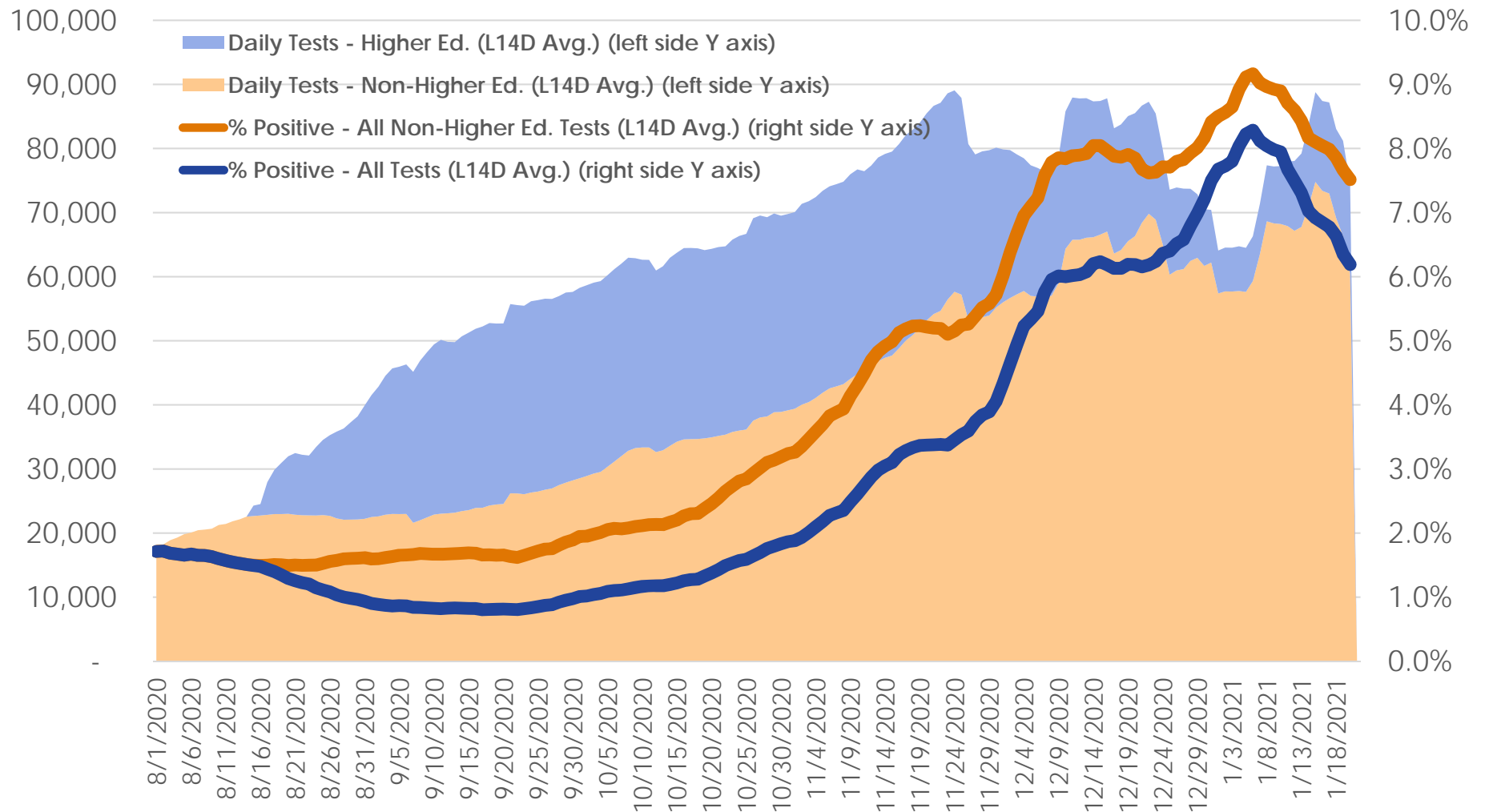
Community Benchmarks - Status



Data source: <https://www.mass.gov/info-details/covid-19-response-reporting# covid-19-weekly-public-health-report->

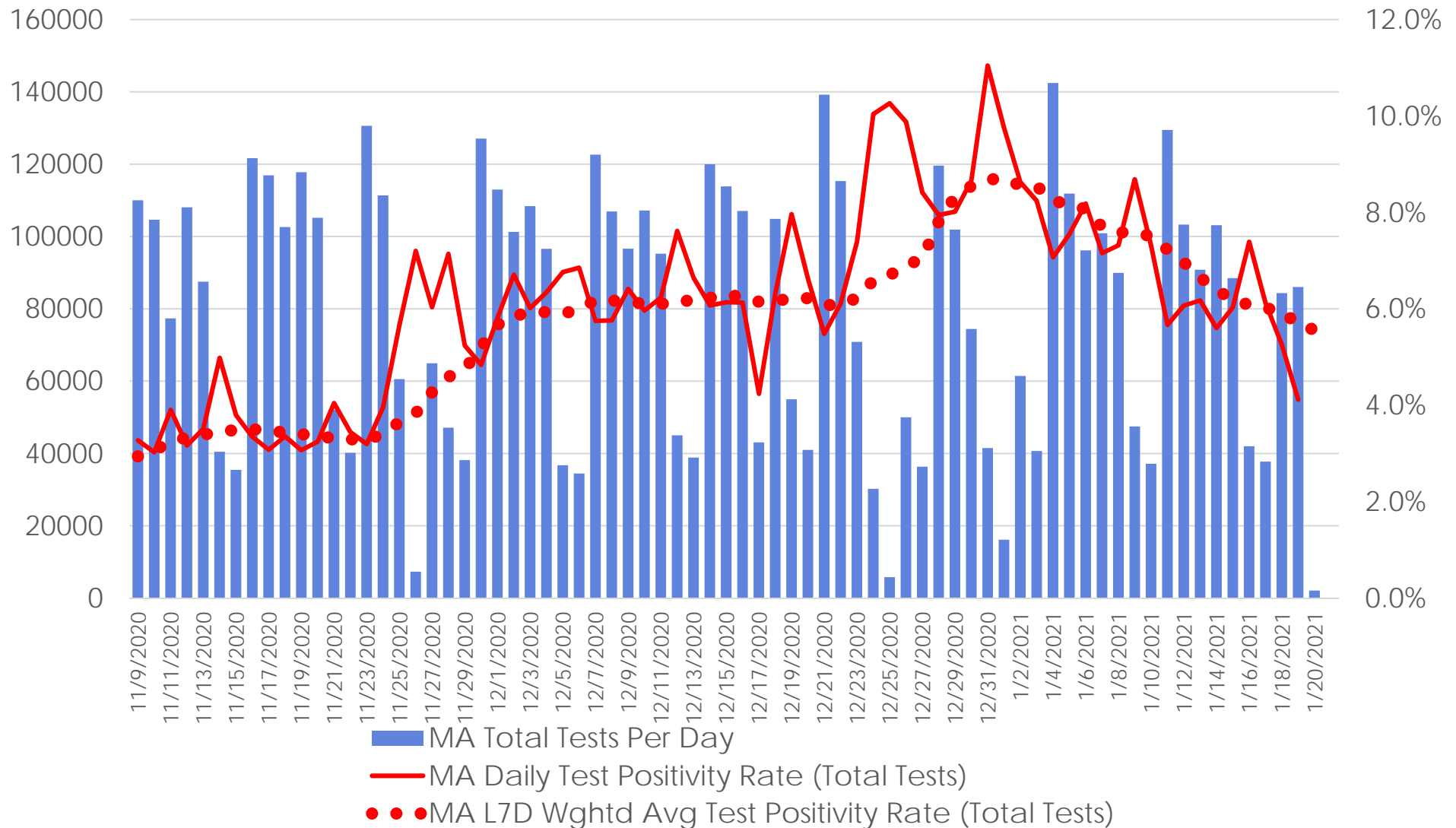
Statewide Test Positivity

MA Statewide Test Positivity



Data source: <https://www.mass.gov/info-details/covid-19-response-reporting>

Statewide Daily Test Data



Data source: <https://www.mass.gov/info-details/covid-19-response-reporting>

Brookline in Regional Context

(as of 1/20/2021)

Municipality	Avg. Daily Cases/100k L14D	% of Tests Positive L14D	Total Tests L14D / Muni. Population
Milton	75.0	4.9%	23%
Boston	71.7	4.6%	25%
Dedham	71.5	6.4%	17%
Watertown	63.8	4.5%	23%
Somerville	56.8	3.5%	26%
Needham	46.9	3.4%	21%
Newton	37.8	2.8%	22%
Belmont	37.3	3.0%	20%
Cambridge	35.3	1.5%	40%
Arlington	31.5	2.9%	17%
Brookline	27.4	2.3%	19%
Wellesley	25.0	1.6%	25%

Data source: <https://www.mass.gov/info-details/covid-19-response-reporting# covid-19-weekly-public-health-report->

Public Schools of Brookline Case Count

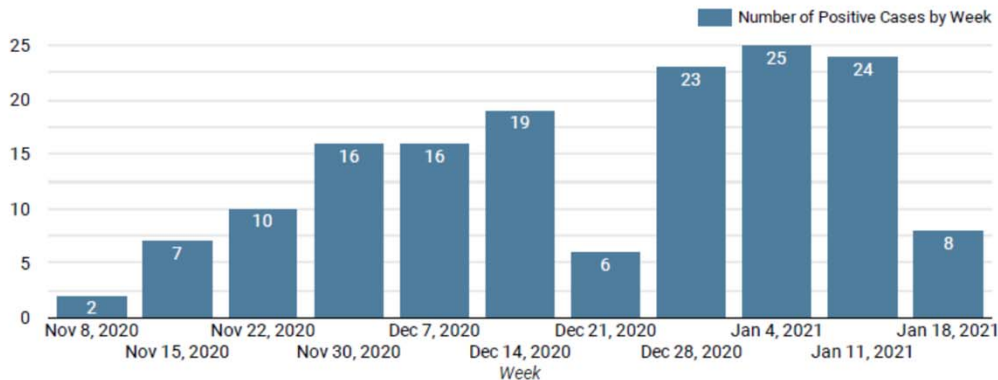
Data Last Updated: 1/22/21



COVID-19 CASES: DISTRICT DASHBOARD

Dashboard outlines number of positive COVID-19 cases in the PSB school community by week and learning model. For the purpose of this dataset, weeks run **Thursday to Friday**.
Source: Public Schools of Brookline School Health Services Department

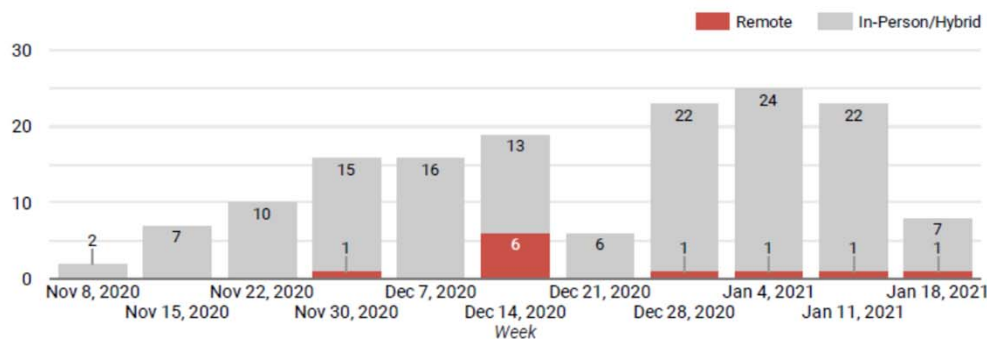
Number of Positive Cases, by Week



TOTAL PSB CASES TO DATE: 181

Remote: 22
Hybrid/In-Person: 159

Number of Positive Cases, by Week and Learning Model



TOTAL PSB CLOSE CONTACTS*: 193

Total Close Contacts* in School Setting: 37

**Close contacts are defined as anyone who has been within 6 feet of a positive case for at least 15 minutes during the infectious period.*

Public Schools of Brookline Case Count

Data Last Updated: 1/22/21



COVID-19 CASES: SCHOOL BY SCHOOL DASHBOARD

The table outlines the number of positive COVID-19 cases by week and the number of cumulative cases for the year at each school. For the purpose of this dataset, weeks run **Thursday to Friday**.
Source: Public Schools of Brookline School Health Services Department

Number of Positive Cases, by School & District Offices (Week of 1/18 - 1/21)

School/Building	Weekly Positive Cases	Cumulative Positive Cases
BEEP @ Beacon	0	3
BEEP @ Clark	0	1
BEEP @ Lynch	0	1
BEEP @ Putterham	1	2
Baker	0	27
Driscoll	0	11
Florida Ruffin Ridley	0	13
Heath	1	7
Lawrence	0	14
Lincoln	0	17
Pierce	1	18
Runkle	1	12
Remote Learning Academy K-8	1	9
Brookline High School	3	42
Total	8	177

School/Building	Weekly Positive Cases	Cumulative Positive Cases
District Office	0	4

Public Schools of Brookline Case Count

Data Last Updated: 1/22/21



COVID-19 CASES: SCHOOL BY SCHOOL DASHBOARD

The table outlines the number of positive COVID-19 cases by week and the number of cumulative cases for the year at each school. For the purpose of this dataset, weeks run **Thursday to Friday**.
Source: Public Schools of Brookline School Health Services Department

Total Number of Positive Cases, by Grade Level and Staffing (Week of 1/18 - 1/21)

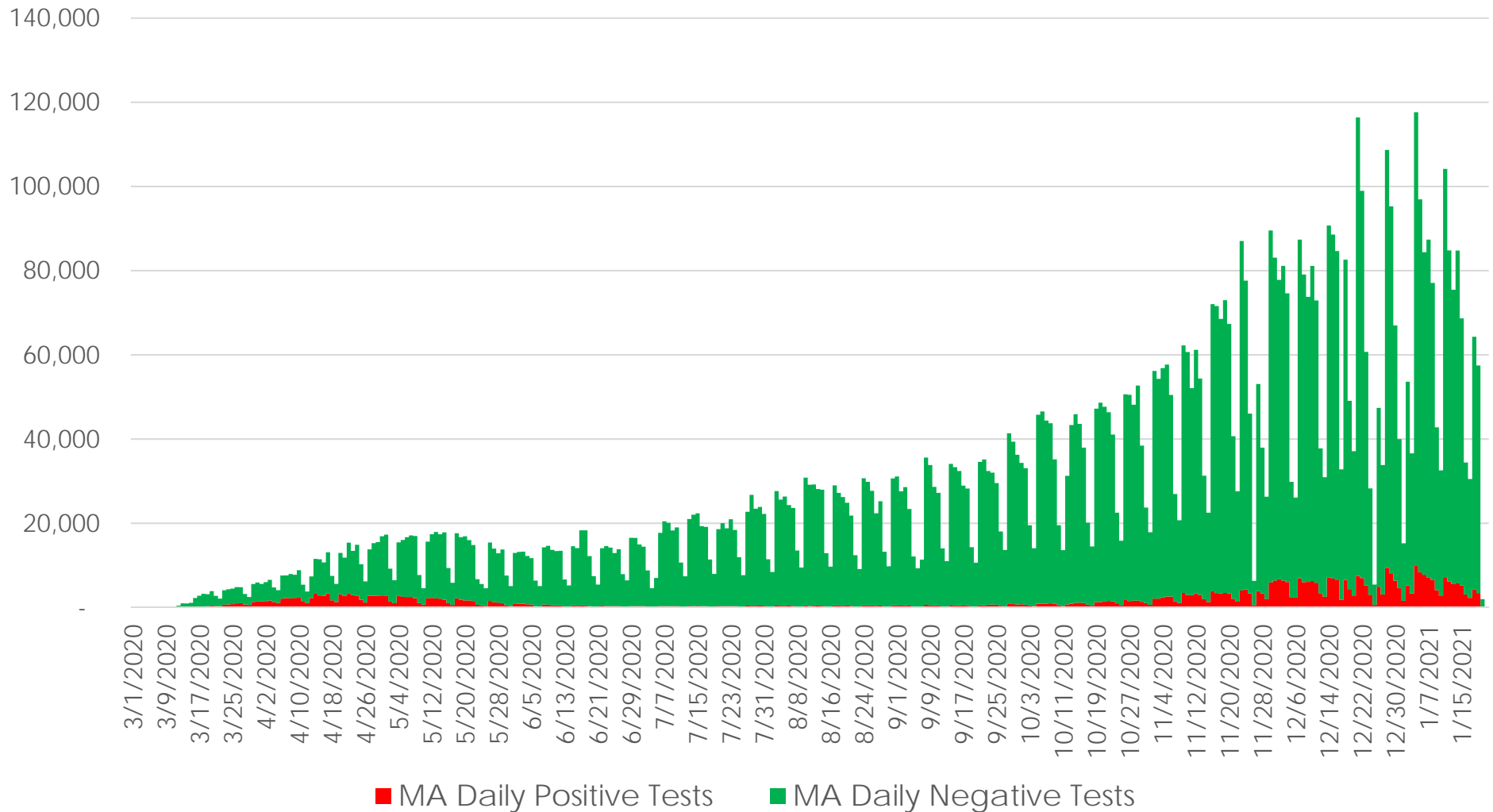
Grade Level	Cumulative Positive Cases
BEEP/Pre-K	3
Kindergarten	14
1st Grade	14
2nd Grade	7
3rd Grade	8
4th Grade	7
5th Grade	9
6th Grade	3
7th Grade	10
8th Grade	12
9th Grade	5
10th - 12th Grade	27
Staff (School-Based)	58
Staff (District Office)	4
Total	181

Chart source: <https://sites.google.com/psbma.org/psb-reopening-hub/dashboard?authuser=0>

Appendix – For Reference As Needed

Statewide Test Results

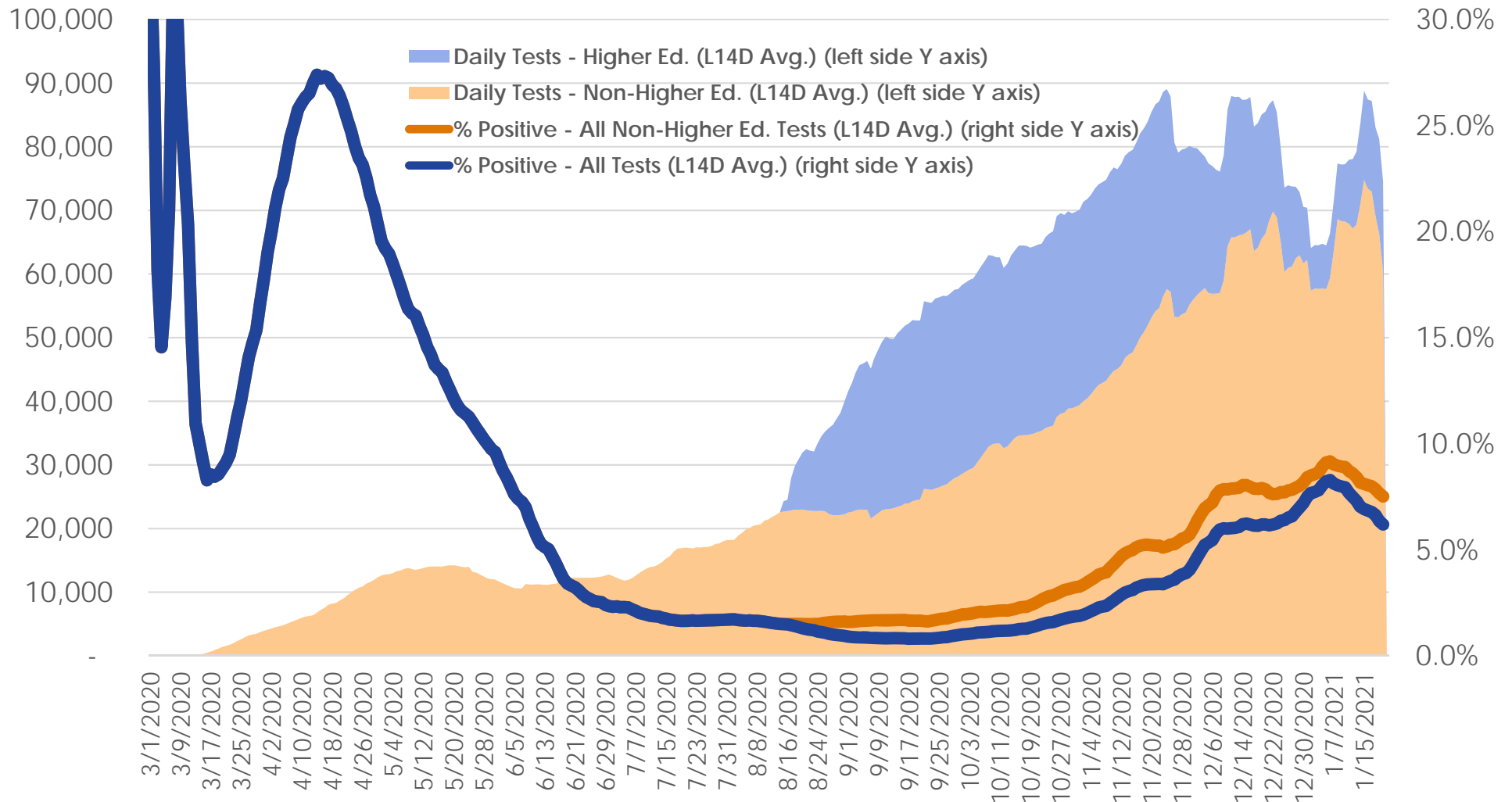
MA Daily Testing History



Data source: <https://www.mass.gov/info-details/covid-19-response-reporting>

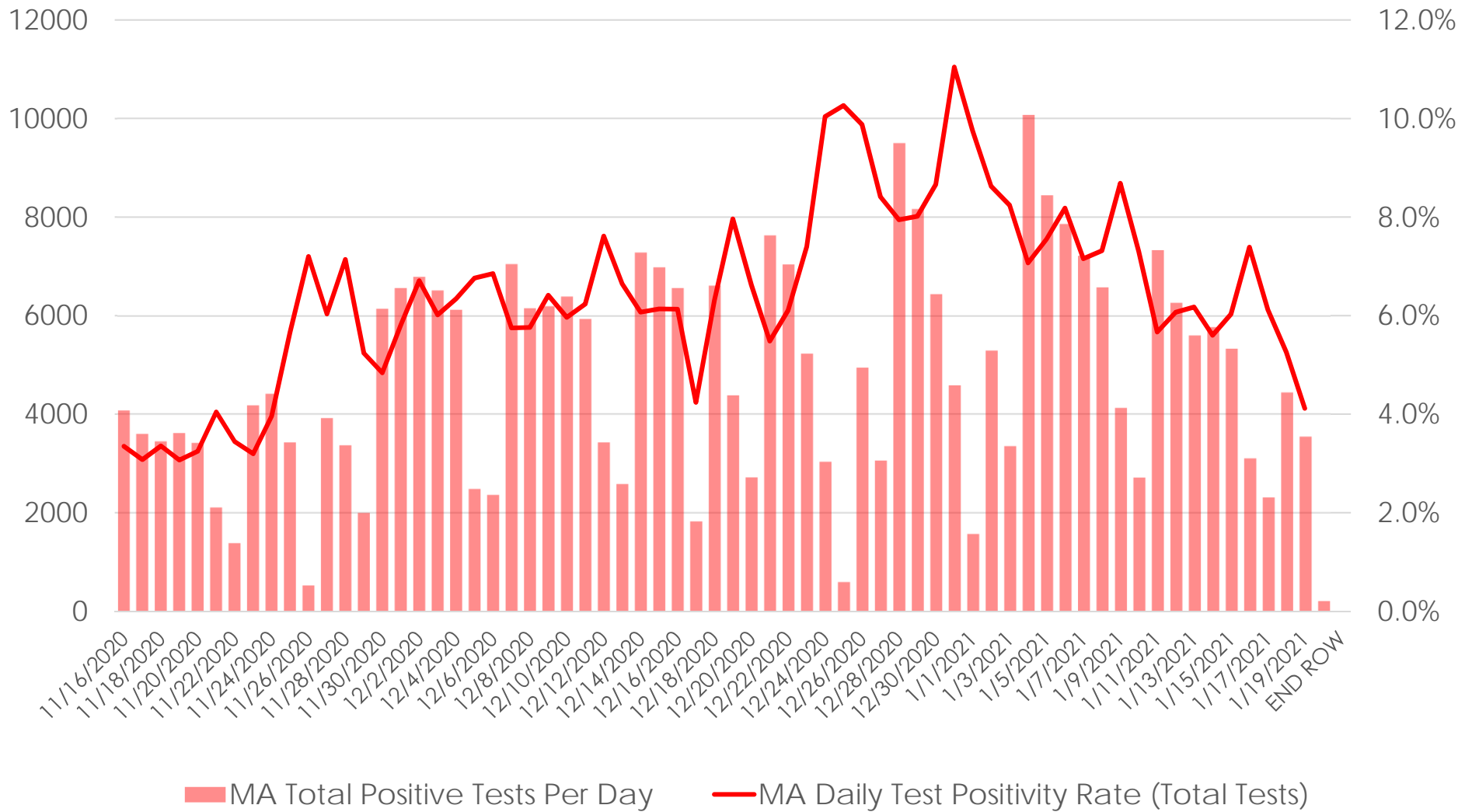
Statewide Test Positivity

MA Statewide Test Positivity



Data source: <https://www.mass.gov/info-details/covid-19-response-reporting>

Statewide Daily Test Data



Data source: <https://www.mass.gov/info-details/covid-19-response-reporting>

MA DESE Guidance – In-Person/Remote

<https://www.doe.mass.edu/covid19/on-desktop/interpreting-dph-metrics.html>

- *Districts are expected to prioritize in-person learning across all color-coded categories, unless there is suspected in-school transmission, in accordance with DESE's Guidance on Responding to COVID-19 Scenarios. Transmission in schools is defined as spread of the virus between people during interactions in the school setting. While there have been positive COVID-19 cases of staff and students in schools, most of these infections have occurred outside of the school setting. If there is suspected in-school transmission, then the affected classrooms or schools should temporarily shift to remote learning, in accordance with DESE's Guidance on Responding to COVID-19 Scenarios. Classrooms and schools should reopen after appropriate mitigation strategies have been implemented, as determined in consultation with the local board of health, DPH, and DESE.*

MA DESE Guidance – In-Person/Remote

<https://www.doe.mass.edu/covid19/on-desktop/interpreting-dph-metrics.html>

- *Districts and schools in communities designated gray, green, or yellow are expected to have students learning fully in-person, if feasible. A hybrid model should be used only if there is no other way to meet health and safety requirements. Parents and caregivers will continue to have the option to choose a district's remote learning program for their children.*

- *Schools in red communities should implement hybrid models, while maximizing in-person learning time for high-needs students.*

- ...

- *Fully remote instructional models should be implemented only as a last resort in classrooms, schools, or districts when there is suspected in-school transmission or a significant municipal outbreak, in accordance with DESE's Guidance on Responding to COVID-19 Scenarios. Classrooms and schools should reopen after appropriate mitigation strategies have been implemented, as determined in consultation with the local board of health, DPH, and DESE.*