



Brookline High School Expansion

Community Update & Discussion

Presentation online at www.brookline.k12.ma.us/capitalprojects

June 13, 2016

Tonight's Agenda

1. Welcome & Introductions
2. Why does Brookline need to expand Brookline High School?
3. What has already been done to prepare for expansion?
4. What happens if we don't expand BHS?
5. Our work tonight – Four Breakout Groups
6. Reconvene – Sharing Highlights
7. What is the Timeline from here?





Brookline High School Expansion

Why do we need to expand BHS?

Why do we need to expand BHS?

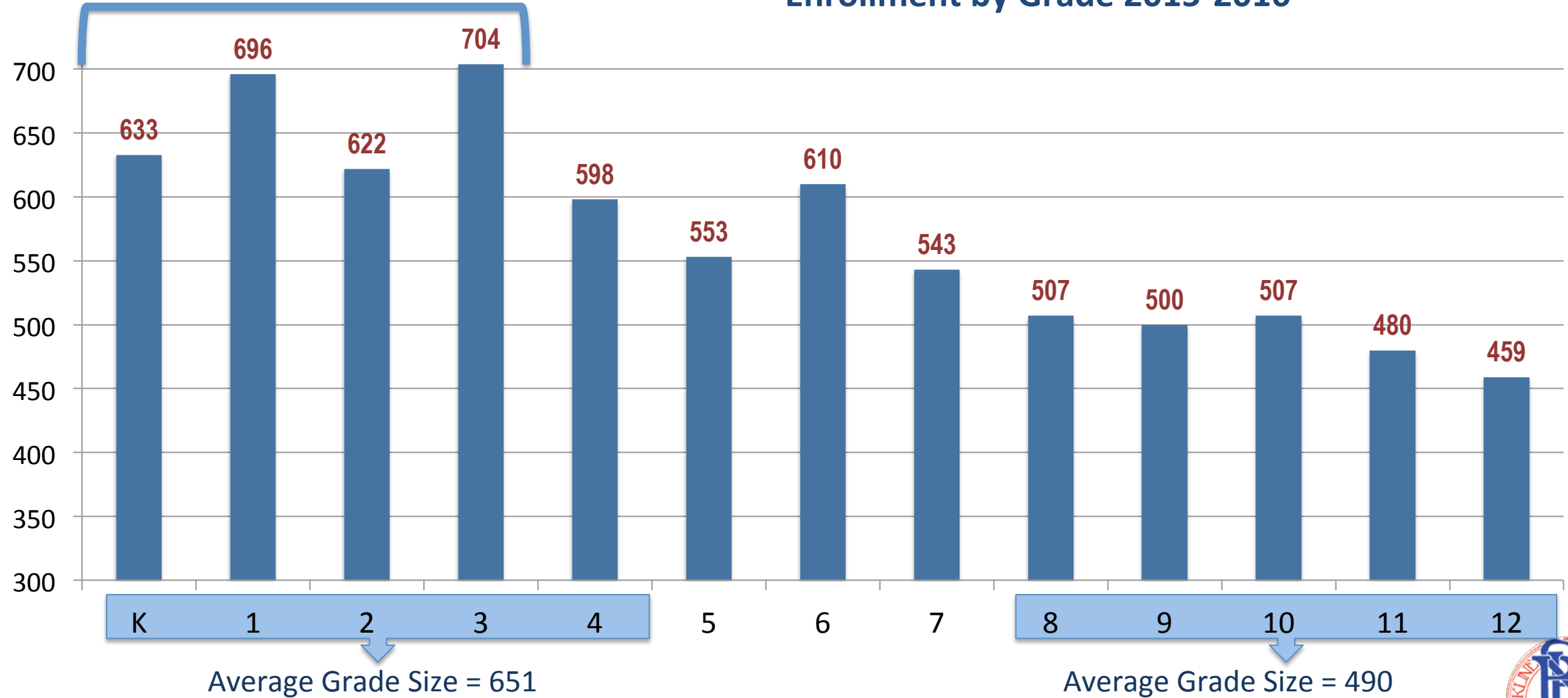
BHS Enrollment is about to increase rapidly

- BHS Student Enrollment (2010 - 2011): 1,726
- Current Enrollment (2015 - 2016): 1,946 (+220)
- Short Term Increase (2021 - 2022): 2,552 (+826)
- Longer Term Projection (2024 - 2025): 2,789 ($\pm 1,063$)

Why do we need to expand BHS?

@ BHS IN Fall 2024

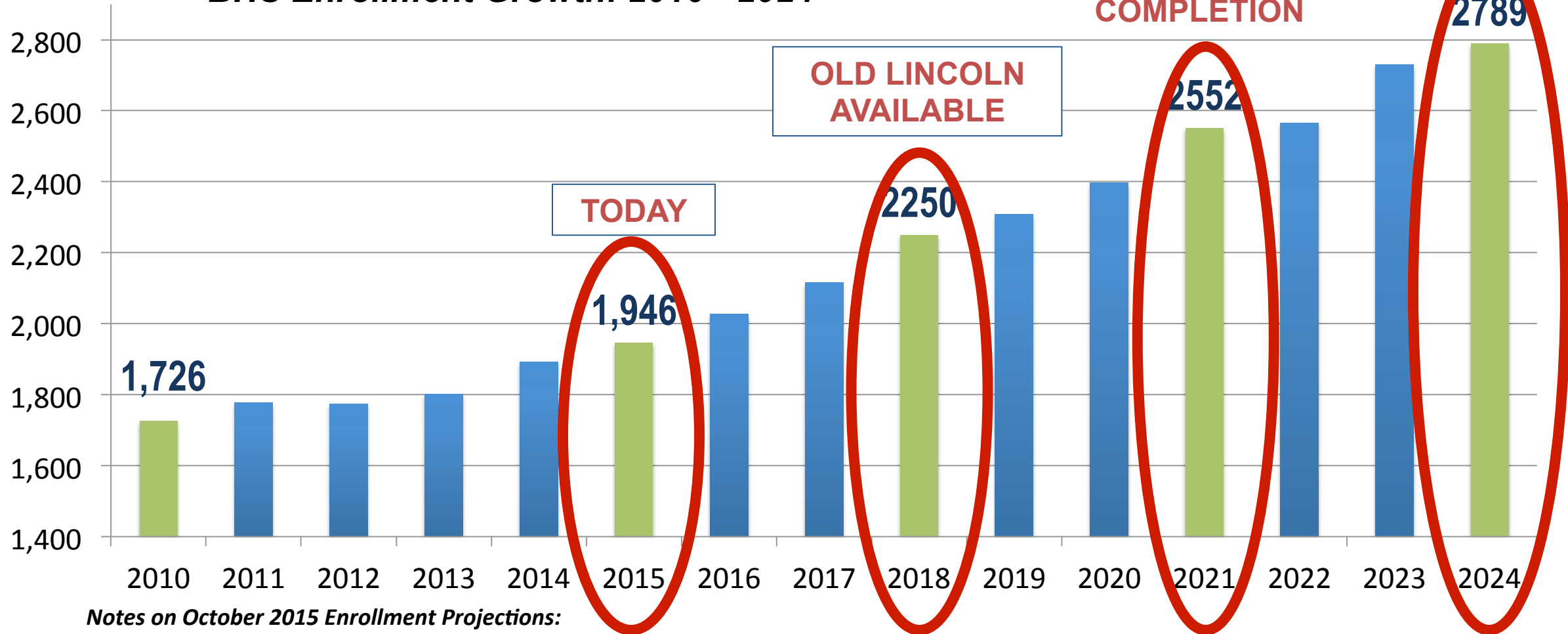
Enrollment by Grade 2015-2016



Why do we need to expand BHS?

TODAY'S 3rd GRADE!

BHS Enrollment Growth: 2010 - 2024



Notes on October 2015 Enrollment Projections:

- Does not include BEEP enrollment
- Includes projected school-age population from proposed developments at: 86 Dummer St., 45 Marion St. The Residences of South Brookline, 111 Cypress St., and Crowninshield Rd.
- Does not include recently proposed residential developments - Puddingstone, 40 Centre St., 420 Harvard St.



Why do we need to expand BHS?

Education today is not the education of yesterday.

Education today requires a different type of school.

1. Class sizes are smaller than 30 or 40 years ago for a number of reasons including:
 - Expansion of Support Services – 20% of traditional classrooms no longer available for general education
 - Program improvement
 - Federal and state regulations (Special Education, English Language Learners, Substantially Separate Programs)
2. Increased State & BHS Graduation Requirements
3. “Time on Learning” Req’s have reduced open periods
 - Minimum of 990 hours of instruction time



Why do we need to expand BHS?

Growth Impact on Academic Spaces

- 24 Additional General Education Classrooms needed
- 23 Appropriately Sized Science Lecture Labs needed
Safety, Educational Delivery, STEM Initiatives
- Add Special Education and Support Space
Substantially Separate Program, Integration



Based on 2015 SMMA Planning Study, 2,600 total students, and MSBA standards

Why do we need to expand BHS?

Growth Impact on Academic Spaces

- 24 Additional General Education Classrooms needed
- 23 Appropriately Sized Science Lecture Labs needed
Safety, Educational Delivery, STEM/STEAM Initiatives
- Add Special Education and Support Space
Substantially Separate Program, Integration



Based on 2015 SMMA Planning Study, 2,600 total students, and MSBA standards



Why do we need to expand BHS?

Growth Impact on Core Spaces:

- Larger Library/Media Center (Changes in Programs & Technology)
- Larger Cafeteria (Or More & Earlier Lunch Periods)
- Additional Support Areas



Why do we need to expand BHS?

Growth Impact on Core Spaces:

- Larger Library/Media Center (Changes in Programs & Technology)
- Larger Cafeteria (Or More & Earlier Lunch Periods)
- Additional Support Areas





Brookline High School Expansion

What has already been done to prepare for expansion?

What has already been done?

Three Studies

- 2009 Masterplan (MGT)
 - 2011 Demographic Update to Masterplan
 - 2013 BHS Concept Study (HMFH)
 - 2015 Further Study Report (SMMA)
-
- » **1,143 total pages of studies**
 - » **15 total options considered over 4 years and 3 studies**



What has already been done?

Community Visioning Process (May and September 2014)

- **Involved 60+ Stake Holders including:**
BHS teachers
District administrators,
BHS administrators,
BHS students & parents
School Committee
Selectmen, Planning Board, Building Commission &
Members of the business community

BHS Faculty Visioning Sessions (March – May 2016)

- Organized by BHS Senior Leadership
- Included Academics Standards Committee
- Full faculty and staff community discussion



What has already been done?

Visioning – BHS Culture and Core Values

- Breadth of Academic and Social Emotional Supports
- Continuous Learning and Rich Experiences for a Range of Learners
- Cultural Diversity/Human Differences
- Relationships are Foundational
- Safety – Intellectual, Social, Emotional and Physical
- Shared Ownership of School and Learning



What has already been done?

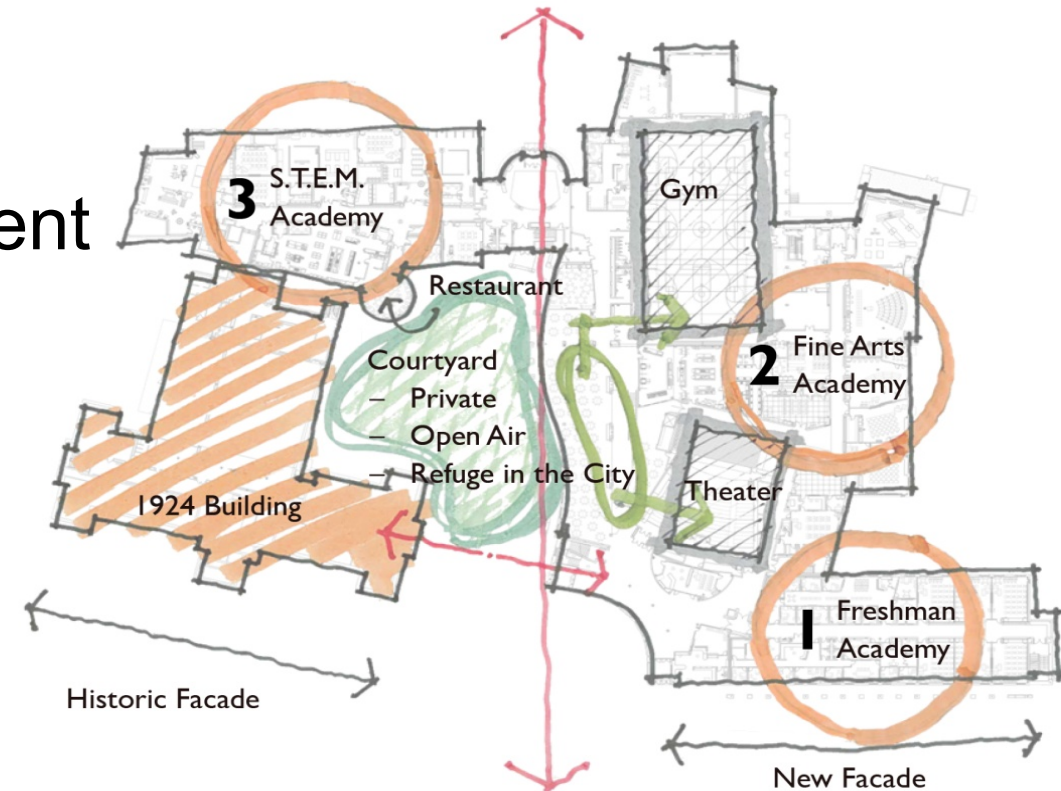
Visioning - Guiding Principles for Design

- Big School, Small Feel
- Allows for Integration Between Disciplines & Departments
- Use of the Entire Building/Campus for Teaching & Learning
- Allows for self-directed, hands-on and experiential learning
- Flexible learning spaces – allow for performance, presentation, collaboration, socializing, independent and group study
- Green/Sustainable



Conceptual Options

- Expanding and Reorganizing the Current BHS Campus
- One High School - Two Campuses
 - Freshman or Senior Academies, Theme-specific Academy (e.g. STEM)
- Two Self-Contained High Schools



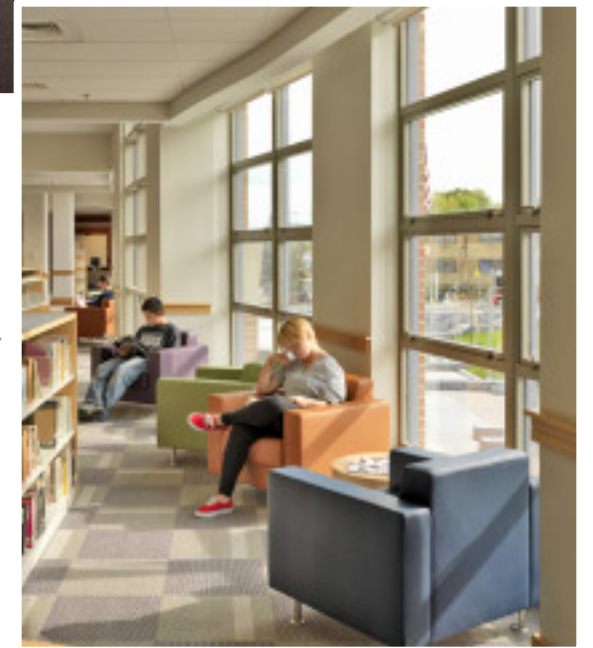
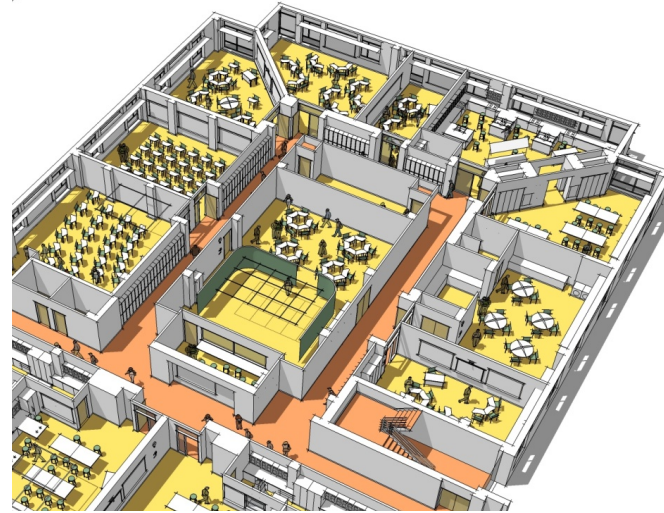
Example of Thematic Houses



Spaces for 21st Century Learning

Collaborative Spaces
Open Spaces
Maker Spaces
Technology-enabled
Naturally Lit
Integrated Learning
across Disciplines





Learning Commons
Public Schools of Brookline





Brookline High School Expansion

What happens if we don't expand BHS?

What happens if we don't expand BHS

- Class sizes increase (from 21.5 today to 27.5 in Fall 2021)
- Unsafe science rooms due to overcrowding
- Core spaces become inadequate and programming must be reduced (phys ed, library, cafeteria)
- Insufficient space for substantially separate programs so students placed out of district
- Double sessions
- Insufficient faculty workspace



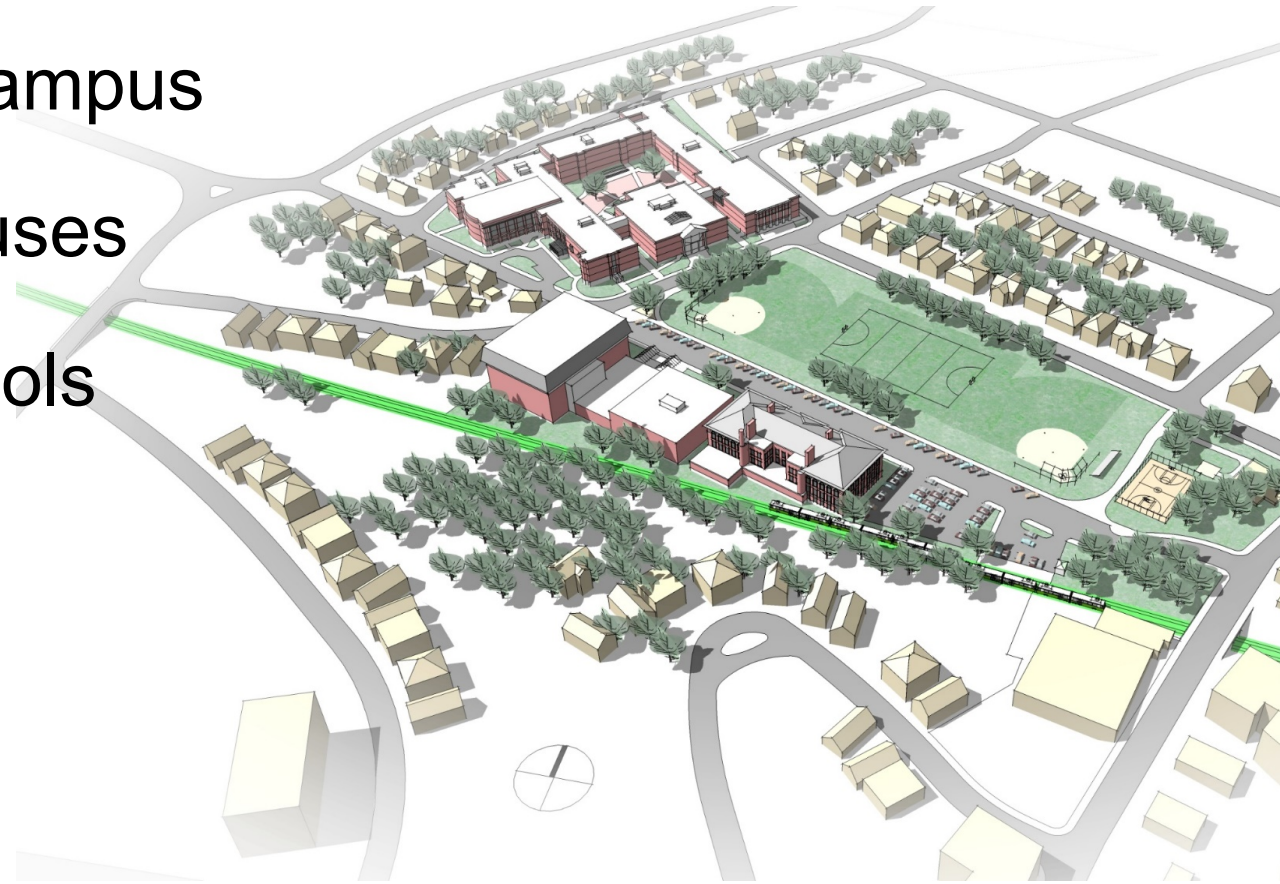


Brookline High School

Tonight's Work in Smaller Groups

Four Rooms Considering Numerous Options

- Expanding the Current BHS Campus
- One High School - Two Campuses
- Two Self-Contained High Schools
- Other Ideas & Approaches



Four Rooms Considering Numerous Options

In each room

Facilitated conversation to:

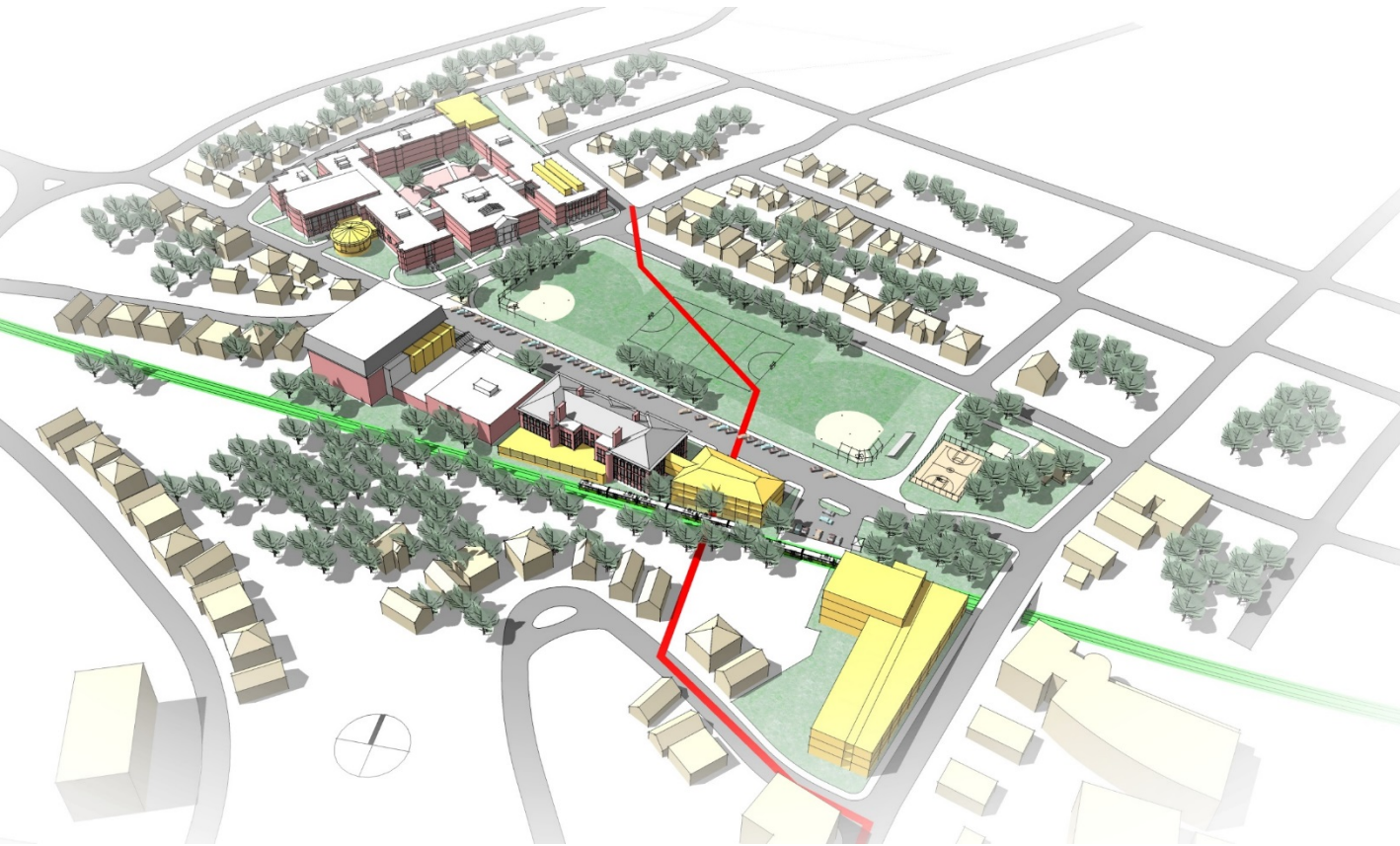
- Brainstorm specific approach (educational and physical)
- Identify strengths of that approach
- Identify challenges of that approach



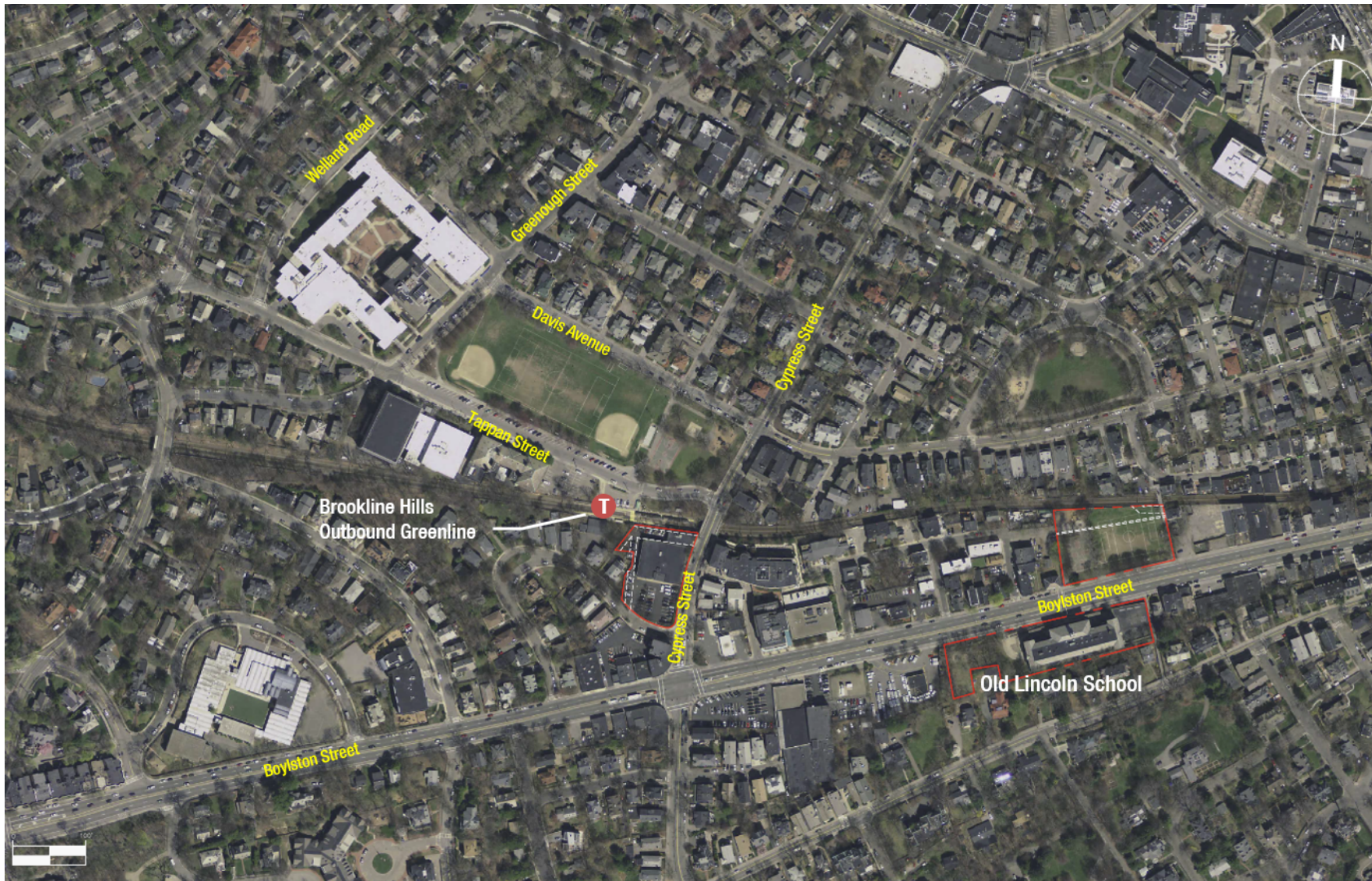
Getting Your Input: *Expanding Current BHS Campus*

For Example

- Re-imagine Tappan Gymnasium
- Build on Parking Lot or Cypress Field
- Change Courtyard
- Expand Campus Boundaries:
 - e.g. 111 Cypress parcel



Getting Your Input: *One High School – Two Campuses*



For Example

- Second campus could be for a specific grade level
- Second campus could be for a specific theme or programs
- Students could take classes at both sites depending on schedule, program, activities



Getting Your Input: *Two Self Contained High Schools*



For Example

- Could have similar or different programs
- Could be similarly sized or differently sized
- Independent of each other for programming and services
- Does not need to be geographically assigned



Getting Your Input: *Other Ideas & Approaches*

For Example

- Externships
- Early College
- International Study



Group Work – Providing Input & Ideas

When you return from your Breakout Room

- Post all of your ideas
- 5 minutes to share your THREE best ideas



Four Rooms Considering Numerous Options

Pick a room to start in:

- Expanding the current BHS Campus → Room 206
- One High School - Two Campuses → Room 208
- Two Self-Contained High Schools → Room 209
- Other Ideas & Approaches → Room 214





Brookline High School

Share Out and Next Steps

Group Work – Providing Input & Ideas

- Post all of your ideas
- 5 minutes to share your THREE best ideas





Next Steps

What happens from here?

May – August 2016

- BHS team creates Educational Plan based on visioning results, and input from a broad range of BHS teachers, staff, and community input including yours from tonight
- Develop preliminary vision and direction for BHS expansion
- Seek services for feasibility study

September 2016

- Begin feasibility study phase. Duration = 6 months

March – April 2017

- Complete feasibility study
- Public presentations and hearings
- Final Decision on any necessary site selection



What happens from here?

May 2017

- Present project to Town Meeting to begin process for attaining funding for Design and Construction Phases

October 2017

- Complete Schematic Design
- Public presentations and hearings

November 2017

- Debt Exclusion Override to fund Construction Drawings and Construction

January 2019

- Groundbreaking for construction. Duration = 29 months

September 2021

- School Opens



THANK YOU!

