

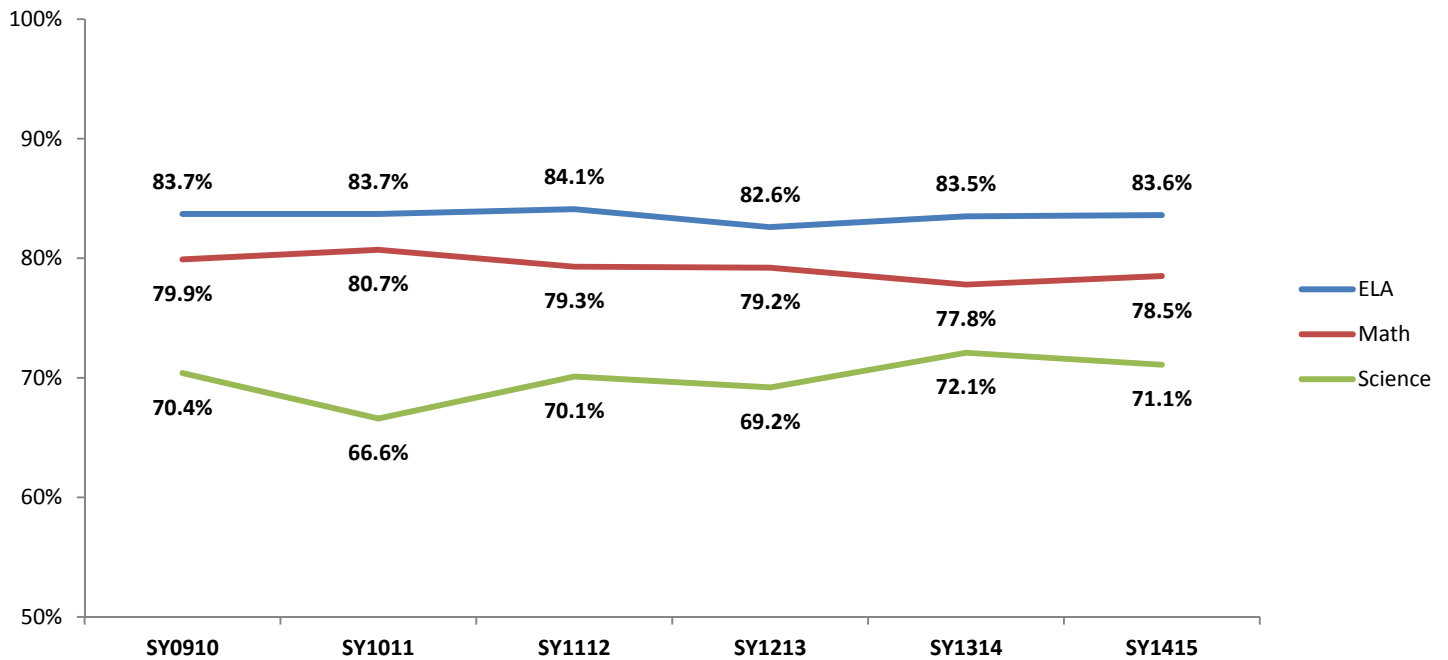
Strategic Plan Measurements, SY2014-15

The following pages contain data intended to provide a high level picture of how students in the district are performing, and have performed over time, on multiple measures of achievement. These measures include MCAS scores, SAT scores, graduation and dropout rates, AP participation and scores, and course enrollment trends.

Student Achievement – MCAS (grades 3-10)

Measurement		SY0910	SY1011	SY1112	SY1213	SY1314	SY1415
Percent of all students reaching proficiency in ELA, Math, and Science	ELA	83.7%	83.7%	84.1%	82.6%	83.5%	83.6%
	Math	79.9%	80.7%	79.3%	79.2%	77.8%	78.5%
	Science	70.4%	66.6%	70.1%	69.2%	72.1%	71.1%
Median student growth percentile* for all students in ELA and Math	ELA	59.0	57.0	60.5	59.0	59.0	59.0
	Math	59.0	64.0	60.0	59.0	59.0	59.0

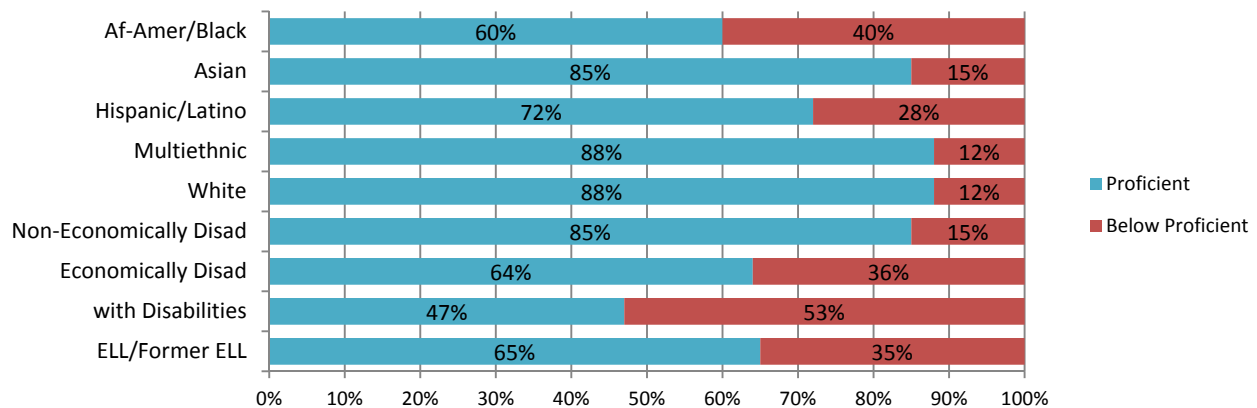
Percent of students reaching proficiency in ELA, Math, & Science over time



Student Achievement by Subgroups – MCAS (grades 3-10) - English Language Arts

Measurement		SY0910	SY1011	SY1112	SY1213	SY1314	SY1415
Percent of students reaching proficiency in ELA, by subgroup*	Af-Amer/Black	64%	62%	62%	63%	60%	60%
	Asian	84%	86%	85%	83%	84%	85%
	Hispanic/Latino	69%	71%	70%	70%	74%	72%
	Multiethnic	83%	83%	83%	86%	86%	88%
	White	88%	88%	89%	86%	88%	88%
	Non-Low Income / Non-Econ Dis	88%	87%	88%	85%	87%	85%
	Low Income / Econ Dis	57%	59%	61%	60%	59%	64%
	with Disabilities	51%	52%	53%	50%	51%	47%
	ELL/Former ELL	63%	70%	69%	64%	66%	65%
Measurement		SY0910	SY1011	SY1112	SY1213	SY1314	SY1415
Median ELA student growth percentile, by subgroup*	Af-Amer/Black	52.0	51.0	51.0	55.0	52.0	48.0
	Asian	65.0	65.0	69.5	62.0	69.0	64.0
	Hispanic/Latino	57.0	53.0	55.5	58.0	52.0	61.0
	Multiethnic	56.0	55.0	61.0	57.0	60.0	64.0
	White	59.0	57.0	60.0	60.0	59.0	59.0
	Non-Low Income / Non-Econ Dis	59.0	57.0	61.0	60.0	61.0	59.0
	Low Income / Econ Dis	54.0	52.0	52.0	55.0	49.0	59.0
	with Disabilities	44.0	47.0	54.0	53.5	50.0	46.0
	ELL/Former ELL	66.0	69.0	71.0	68.0	63.0	65.0

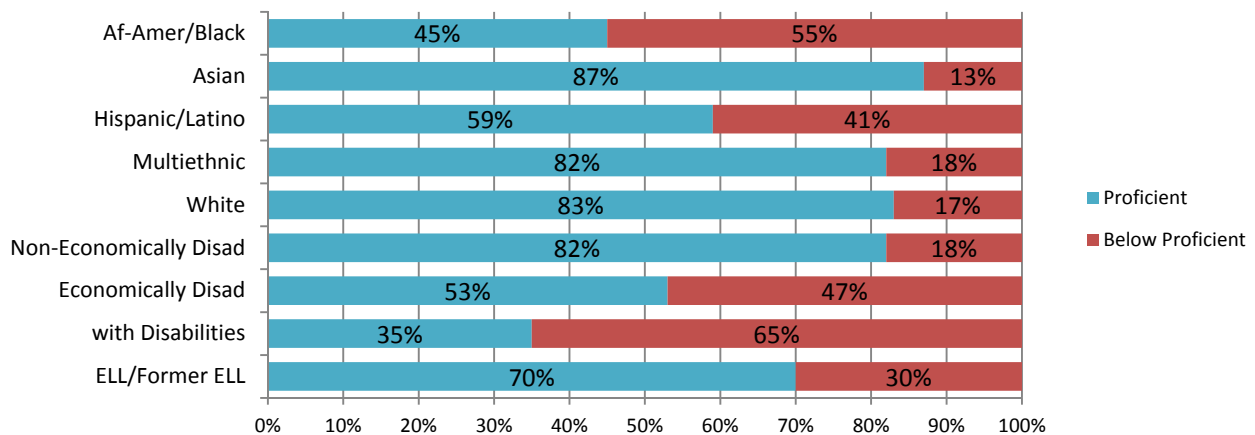
**Percent of students scoring at or above proficiency, MCAS ELA, Spring 2015:
By subgroup**



Student Achievement by Subgroups – MCAS (grades 3-10) – Math

Measurement		SY0910	SY1011	SY1112	SY1213	SY1314	SY1415
Percent of students reaching proficiency in Math, by subgroup*	Af-Amer/Black	54%	50%	46%	44%	42%	45%
	Asian	88%	90%	89%	88%	87%	87%
	Hispanic/Latino	57%	63%	58%	59%	58%	59%
	Multiethnic	77%	81%	78%	81%	80%	82%
	White	84%	85%	85%	84%	82%	83%
	Non-Low Income / Non-Econ Dis	85%	85%	85%	83%	82%	82%
	Low Income / Econ Dis	49%	50%	47%	48%	44%	53%
	with Disabilities	42%	42%	42%	38%	38%	35%
	ELL/Former ELL	74%	77%	75%	76%	73%	70%
Measurement		SY0910	SY1011	SY1112	SY1213	SY1314	SY1415
Median Math student growth percentile, by subgroup*	Af-Amer/Black	51.5	50.0	50.0	43.0	47.0	52.0
	Asian	65.0	71.0	63.0	71.0	67.0	71.0
	Hispanic/Latino	52.0	55.0	49.0	55.0	50.5	56.0
	Multiethnic	53.0	71.0	62.0	57.0	62.0	65.0
	White	61.0	64.0	60.0	59.0	59.0	57.0
	Non-Low Income / Non-Econ Dis	60.0	66.0	60.0	60.0	60.0	60.0
	Low Income / Econ Dis	51.0	48.0	48.0	48.0	46.0	55.0
	with Disabilities	52.0	49.0	50.0	44.0	48.0	50.0
	ELL/Former ELL	68.0	80.0	63.0	65.0	71.0	64.5

**Percent of students scoring at or above proficiency, MCAS math, Spring 2015:
By subgroup**



High School Achievement: SAT¹

Measurement		SY0910	SY1011	SY1112	SY1213	SY1314	SY1415
Average highest SAT score earned by graduating seniors: Composite (out of 2400)	All students	1796	1791	1911	1843	1843	1843
	Af-Amer/Black	1328	1391	1434	1423	1475	1330
	Asian	1814	1791	1962	1908	1829	1896
	Hispanic/Latino	1549	1630	1752	1560	1615	1645
	Multiethnic	*	1791	1908	1765	1892	1827
	White	1903	1870	1975	1927	1940	1908
	Non-Low Income / Non-Econ Dis	1850	1840	1954	1886	1886	1870
	Low Income / Econ Dis	1396	1480	1538	1482	1488	1624
	with Disabilities	1499	1462	1487	1452	1460	1485
	ELL/Former ELL	*	*	1573	1662	1556	1783
Measurement		SY0910	SY1011	SY1112	SY1213	SY1314	SY1415
Percent of graduating senior test-takers meeting the SAT benchmark score of 1550 ² (out of 2400)	All students	77%	76%	80%	81%	79%	71%
	Af-Amer/Black	21%	25%	25%	23%	43%	18%
	Asian	82%	83%	85%	92%	74%	84%
	Hispanic/Latino	45%	66%	59%	52%	51%	49%
	Multiethnic	*	65%	80%	71%	78%	74%
	White	89%	84%	88%	91%	91%	89%
	Non-Low Income / Non-Econ Dis	83%	81%	85%	86%	84%	83%
	Low Income / Econ Dis	33%	43%	39%	37%	38%	50%
	with Disabilities	51%	35%	31%	35%	37%	38%
	ELL/Former ELL	*	*	47%	65%	43%	75%

¹ The ACT is a less-frequently completed test in Brookline than the SAT. Therefore, there were not enough students who completed the ACT from each subgroup to enable subgroup-level reporting of ACT results across each year. For this reason, the report considers only SAT scores.

² The benchmark score of 1550 is the point at which College Board research indicates students demonstrate readiness for college-level work.

Enrollment in Advanced Courses

Measurement		SY0910	SY1011	SY1112	SY1213	SY1314	SY1415
Percent of high school students enrolled in at least one core course ³ above the standard level.	All students	81%	83%	84%	85%	85%	84%
	Af-Amer/Black	54%	57%	58%	62%	59%	59%
	Asian	92%	91%	93%	93%	89%	89%
	Hispanic/Latino	61%	68%	70%	74%	72%	73%
	Multiethnic	74%	77%	79%	79%	84%	79%
	White	87%	88%	89%	89%	90%	89%
	Non-Low Income / Non-Econ Dis	86%	88%	89%	89%	89%	89%
	Low Income / Econ Dis	51%	54%	55%	59%	62%	62%
	with Disabilities	38%	43%	42%	42%	35%	38%
	ELL	41%	35%	68%	49%	56%	50%

³ For this measurement, core courses are those offered in English Language Arts, Mathematics, Science, Social Studies, and World Language. Courses above the standard level include Honors, Advanced, and Advanced Placement (AP).

Advanced Placement Courses and Outcomes

Measurement		SY0910	SY1011	SY1112	SY1213	SY1314	SY1415
Percent of high school students in grades 11 or 12 enrolled in at least one Advanced Placement (AP) course.	All students	40%	37%	45%	45%	46%	46%
	Af-Amer/Black	7%	1%	6%	12%	11%	8%
	Asian	51%	52%	63%	70%	60%	61%
	Hispanic/Latino	19%	20%	26%	22%	27%	26%
	Multiethnic	38%	37%	44%	43%	37%	49%
	White	46%	43%	51%	49%	51%	49%
	Non-Low Income / Non-Econ Dis	44%	42%	50%	49%	50%	51%
	Low Income / Econ Dis	16%	12%	16%	16%	20%	18%
	with Disabilities	8%	6%	6%	6%	8%	8%
	ELL/Former ELL	*	15%	*	12%	21%	13%
Measurement		SY0910	SY1011	SY1112	SY1213	SY1314	SY1415
Percent of Advanced Placement (AP) tests scoring 3 or higher.	All students ⁴	91%	93%	95%	94%	93%	92%
Total number of students completing an AP test, across all subjects.	All students	364	342	421	397	390	416
Total number of AP tests completed, across all subjects.	All students	672	640	852	849	802	883

⁴ Due to the way that the College Board disaggregates race/ethnicity and income status, it is not possible to meaningfully report by racial and income subgroups at this time.

High School Outcomes⁵

Measurement		SY0910	SY1011	SY1112	SY1213	SY1314	SY1415
Percent of high school students who graduate from high school in four years	All students	90%	90%	93%	92%	91%	92%
	Af-Amer/Black	88%	88%	93%	84%	86%	81%
	Asian	93%	93%	93%	100%	94%	96%
	Hispanic/Latino	88%	76%	84%	89%	92%	91%
	Multiethnic	100%	93%	90%	82%	91%	90%
	White	90%	91%	94%	93%	91%	93%
	Low Income / Econ Dis	82%	83%	84%	79%	77%	83%
	with Disabilities	80%	77%	82%	78%	65%	74%
	ELL	83%	76%	86%	92%	90%	97%
Measurement		SY0910	SY1011	SY1112	SY1213	SY1314	SY1415
Percent of high school students who drop out of high school within four years	All students	3%	3%	2%	2%	3%	2%
	Af-Amer/Black	4%	2%	2%	0%	6%	6%
	Asian	3%	2%	1%	0%	4%	0%
	Hispanic/Latino	4%	6%	11%	5%	2%	2%
	Multiethnic	0%	0%	0%	5%	5%	5%
	White	3%	3%	1%	2%	2%	1%
	Low Income / Econ Dis	6%	5%	6%	7%	4%	6%
	with Disabilities	6%	2%	5%	4%	6%	5%
	ELL	8%	14%	5%	4%	10%	0%

⁵ The State's Department of Elementary and Secondary Education does not release official graduation and dropout rates for the non-low income and former ELL student subgroups.

Further Information

Category	Further Information/Definition
Student growth percentile (SGP)	<p>The median student growth percentile (SGP) is, by definition, a measure of growth. Therefore we don't look for continuous improvement but rather measure our progress based on fixed targets. The statewide median SGP is 50. SGPs above this number indicate students who are outperforming their academic peers. Further information about SGP can be found at http://www.doe.mass.edu/mcas/growth</p> <p>The Student Growth Percentile (SGP) is a measure of student progress that compares changes in a student's MCAS scores to changes in MCAS scores of other students with similar scores in prior years ("academic peers"). More information about the SGP can be found at http://www.doe.mass.edu/mcas/growth/InterpretiveGuide.pdf.</p> <p>The DESE states that roughly 65% of student groups will have a median SGP somewhere between 40 and 60. Medians above 60 or below 40 are unusual and indicate particularly high or low rates of growth.</p>
Race/ethnicity categories	<p>Students are categorized into only one racial/ethnic group: Asian, Black/African-American, Hispanic/Latino, Multi-Racial, White, Native American, or Native Hawaiian.</p> <ul style="list-style-type: none"> • Students who identify as ethnically Hispanic/Latino will be categorized as such regardless of the racial category(ies) they select. • Students who do not identify as ethnically Hispanic/Latino who select one racial group will be categorized as that group. • Students who do not identify as ethnically Hispanic/Latino who select more than one racial group will be categorized as "multi-racial". In Brookline, students identified as "Multi-Racial" are most likely to have selected that they are both Asian and White (70% of Multi-Racial students chose these two categories in 2015-16).
Low Income and Economically Disadvantaged	<p>In 2015, the Massachusetts Department of Elementary and Secondary Education (DESE) updated the income-based subgroup definition from "low income" to "economically disadvantaged".</p> <ul style="list-style-type: none"> • "Low Income" included students whose families were on Transitional Aid to Families or food stamps benefits or who qualified for free/reduced price lunch via an application. • "Economically Disadvantaged" includes those students whose families are involved in Supplemental Nutrition Assistance, Transitional Assistance for Families with Dependent Children, foster care, and/or Medicaid/MassHealth. Students who qualify for free or reduced price lunch via an application are not included in this subgroup.