

# Town of Brookline Community Meeting

Michael Driscoll  
School Project  
Brookline, MA

May 6, 2020

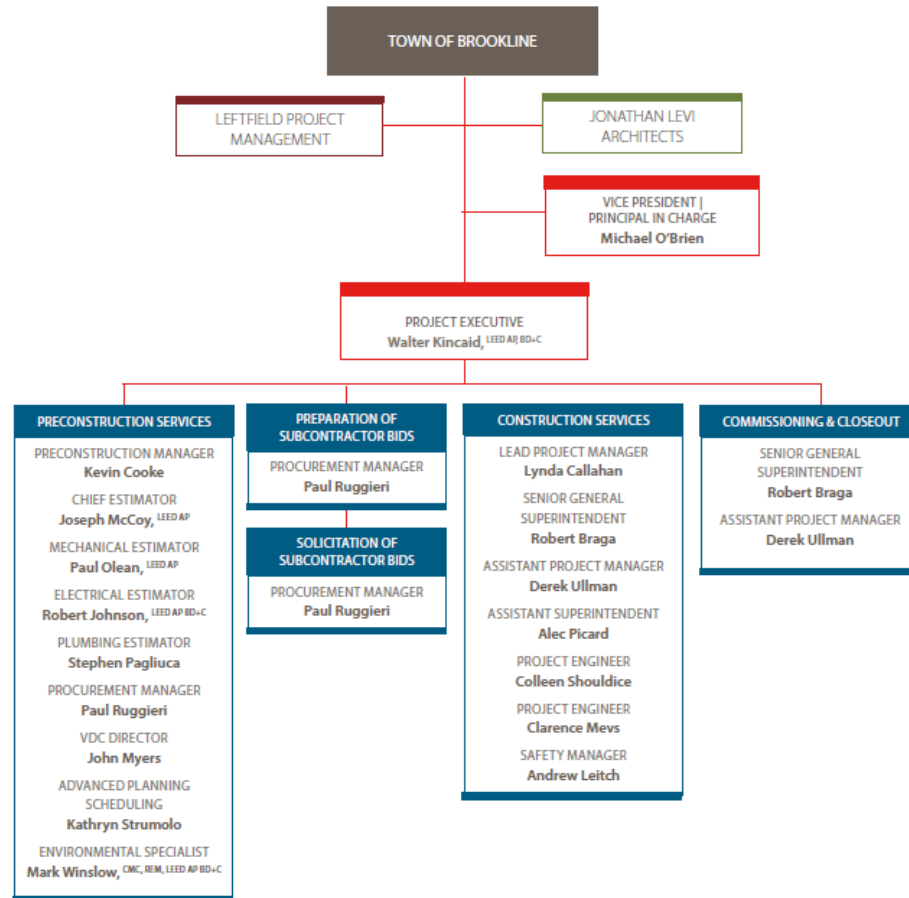


# Agenda

What we have heard from the Community:

- Safety Concerns – Keeping the work inside the fence limits
- Signage and Wayfinding – Pedestrian Routing plan & Traffic Management
- Noise and how it affects the students as well as the neighbors
- Temporary Play areas during construction
- Dust Mitigation & Materials Managements - Keeping the site clean and neighborhood clean throughout the process
- Parking for Contractors

# Gilbane Project Organization



Walt Kincaid, LEED AP  
Sr. Project Executive



Lynda Callahan  
Lead Project Manager



Derek Ullman  
Assistant Project Manager



Bob Braga  
Sr. General Superintendent



## Relevant Experience – Dearborn Stem Academy Boston, MA





## Relevant Experience - Winthrop High School





## Relevant Experience – Elbridge Gerry Elementary Marblehead





## Relevant Experience – Quincy High School





## Relevant Experience – Wilmington High School









## Safety – COVID 19

- Daily Sanitary Cleaning and Disinfecting throughout project spaces
- Warm water hand washing stations
- Onsite Medic for Wellness Screening
- Wearing Approved Face coverings while working inside or within 6' of others
- No Trade Car Pooling
- Keep trades separated by 6' while working

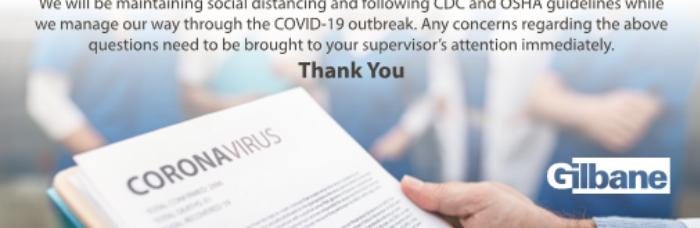
**GILBANE CARES**  
**YOUR HEALTH & SAFETY IS OUR #1 PRIORITY**

Before you enter the jobsite, please read these questions:  
If you answer **YES** to any of them, please do **NOT** come to work and contact your supervisor.

-  Are you currently feeling sick?
-  Did you take your temperature before arriving at work this morning and is your temperature 100.4° F [37.8° C] or more?  
*If you do not have the means to take your temperature, discuss any current symptoms of fever with your supervisor.*
-  Are you having any breathing issues?
-  Have you traveled outside of your local government's current travel restrictions for any reason?
-  Have you been in close contact with anyone that is being tested for COVID-19 because they have symptoms consistent with COVID-19?
-  Have you tested positive or been in close contact (within 6 ft. for 10 minutes) with anyone that has tested positive for COVID-19?

If you answer **NO** to all of the above, please come to work.  
We will be maintaining social distancing and following CDC and OSHA guidelines while we manage our way through the COVID-19 outbreak. Any concerns regarding the above questions need to be brought to your supervisor's attention immediately.

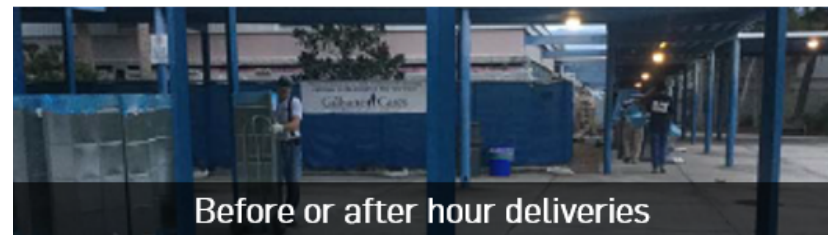
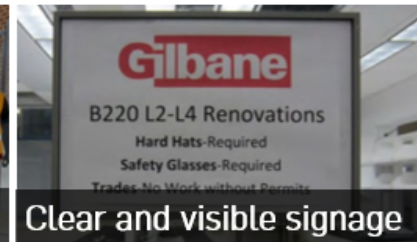
**Thank You**





# Safety

- Project Planning – Planning and Execution Process
  - Job Hazard Analyses are drivers for construction operations
  - Look-a heads for school operations vs. construction related activities
  - Isolating Construction Zone from the Occupied School
  - Safety Orientation for Every Person on Site
  - Noise and Dust/Vibration Control
  - Indoor Air Quality for Existing School
  - Hazardous Materials Management
  - Site Security
  - Detailed Site Logistics- Parking & Utilities
- Gilbane and our Subcontractor Partners are Guests on Your Campus
  - Respectful of School Operations and Activities
  - Gilbane Non-Negotiables – Ticket of entry for subs





# Safety

## MANDATORY GILBANE NON-NEGOTIABLES



Safety Toed Footwear



Hard Hat



Reflective Vests



Drug and Alcohol Testing



100% Cut Level #4 Gloves



Safety Glasses



6' Fall Protection



Safety Briefing Prior to Any Walk



SafetyNet Inspection



New Worker Orientation



Short Service Worker Program



Stretch and Flex Daily



Safety Manager Requirement for Critical Trades

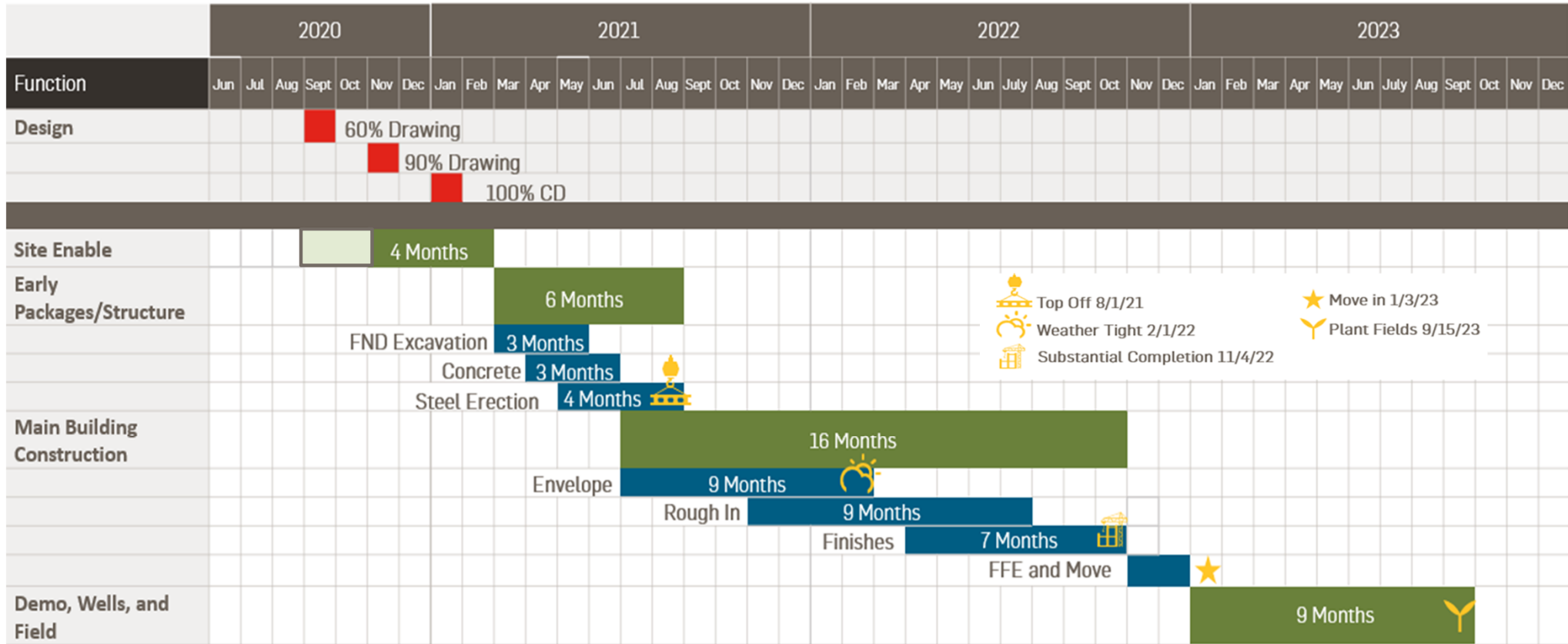


Housekeeping

## Safety – Worker Responsibilities

- All workers will attend site specific safety orientation
- CORI Process/SORI Process
- All Workers will participate in mandatory drug testing
- All Workers will park in designated areas offsite
- All workers will present at least an OSHA 10 Card (Foreman required OSHA 30)
- All workers will stay within construction areas only.
- All workers will conduct themselves in a respectful & positive manner representing Gilbane and their employer at the project site. Failure to do this will result in their immediate excusal from the site.
- At no time will trade workers be communicating with School staff, Gilbane will be lead in the communication process of staff if absolutely necessary.

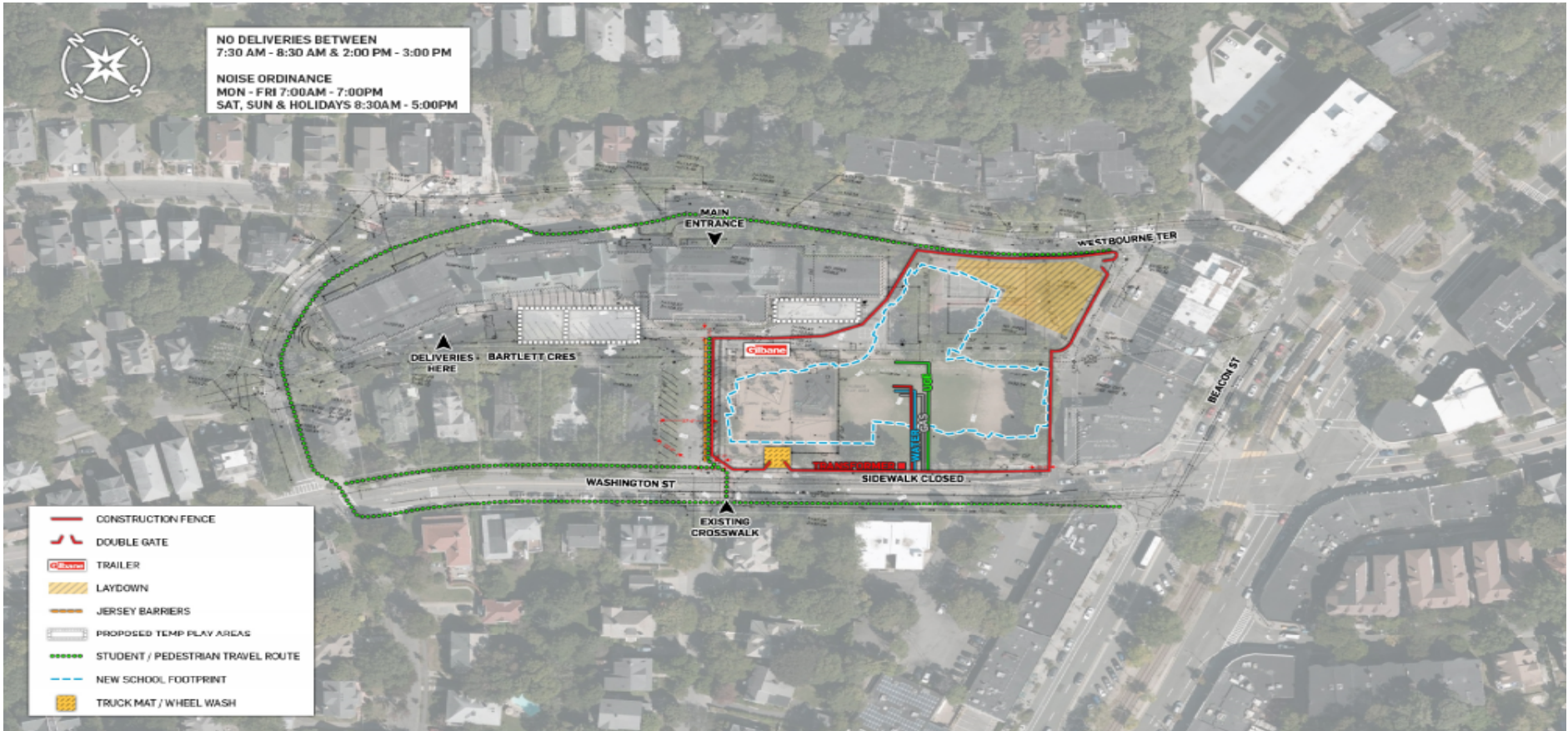
# Michael Driscoll School Project Schedule Review





# Michael Driscoll School Project Logistics

## Construction November 2020 – March 2021



# Michael Driscoll School Project Logistics

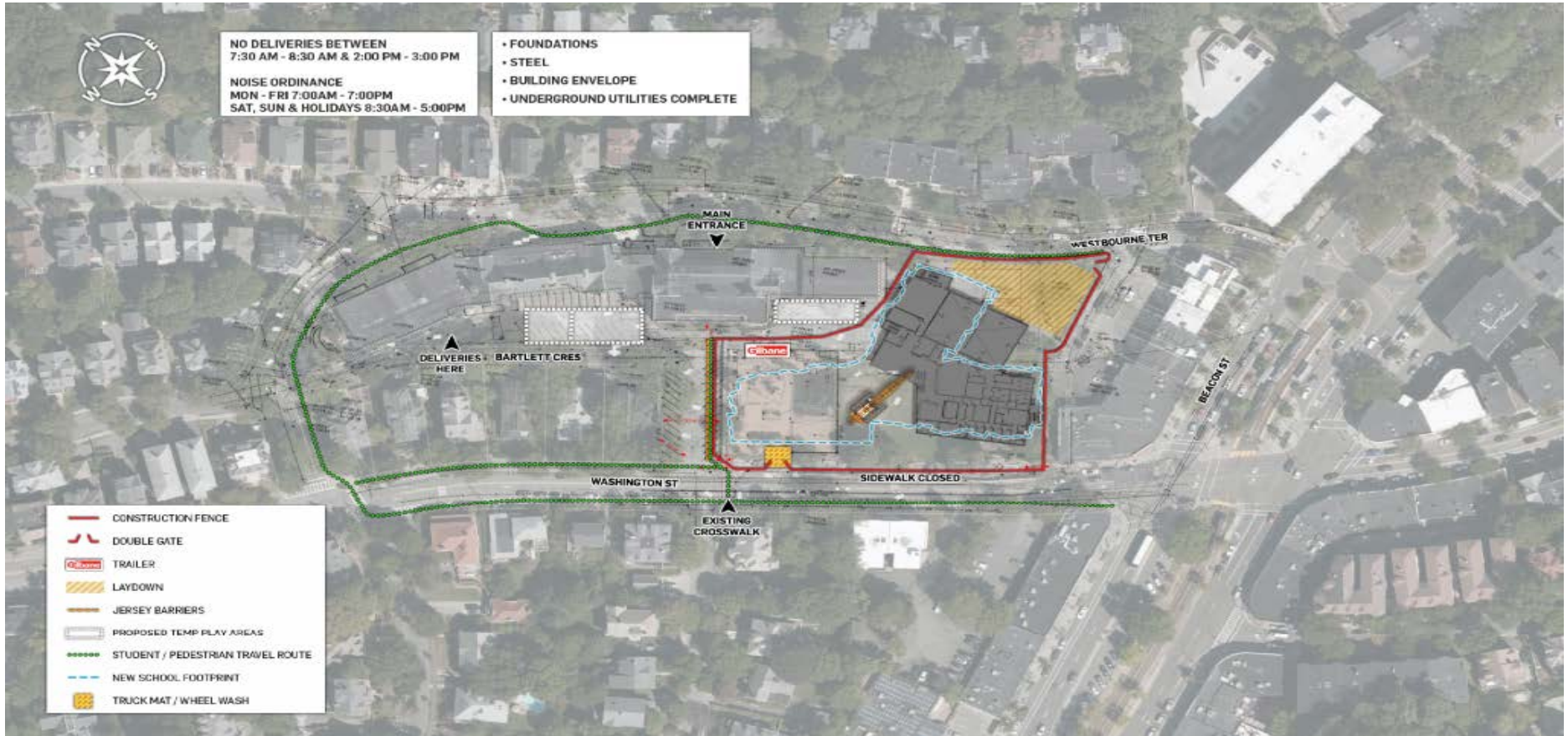
## Temporary Play Areas During Construction





# Michael Driscoll School Project Logistics

## Construction March 2021–October 2022







**Michael Driscoll School Project Logistics**  
Construction March 2021 – October 2022



**Michael Driscoll School Project Logistics**  
Construction March 2021 – October 2022



**Michael Driscoll School Project Logistics**  
Construction March 2021 – October 2022





# Michael Driscoll School Project Logistics



Demolition, Geothermal Wells & Fields  
January 2023 – September 2023

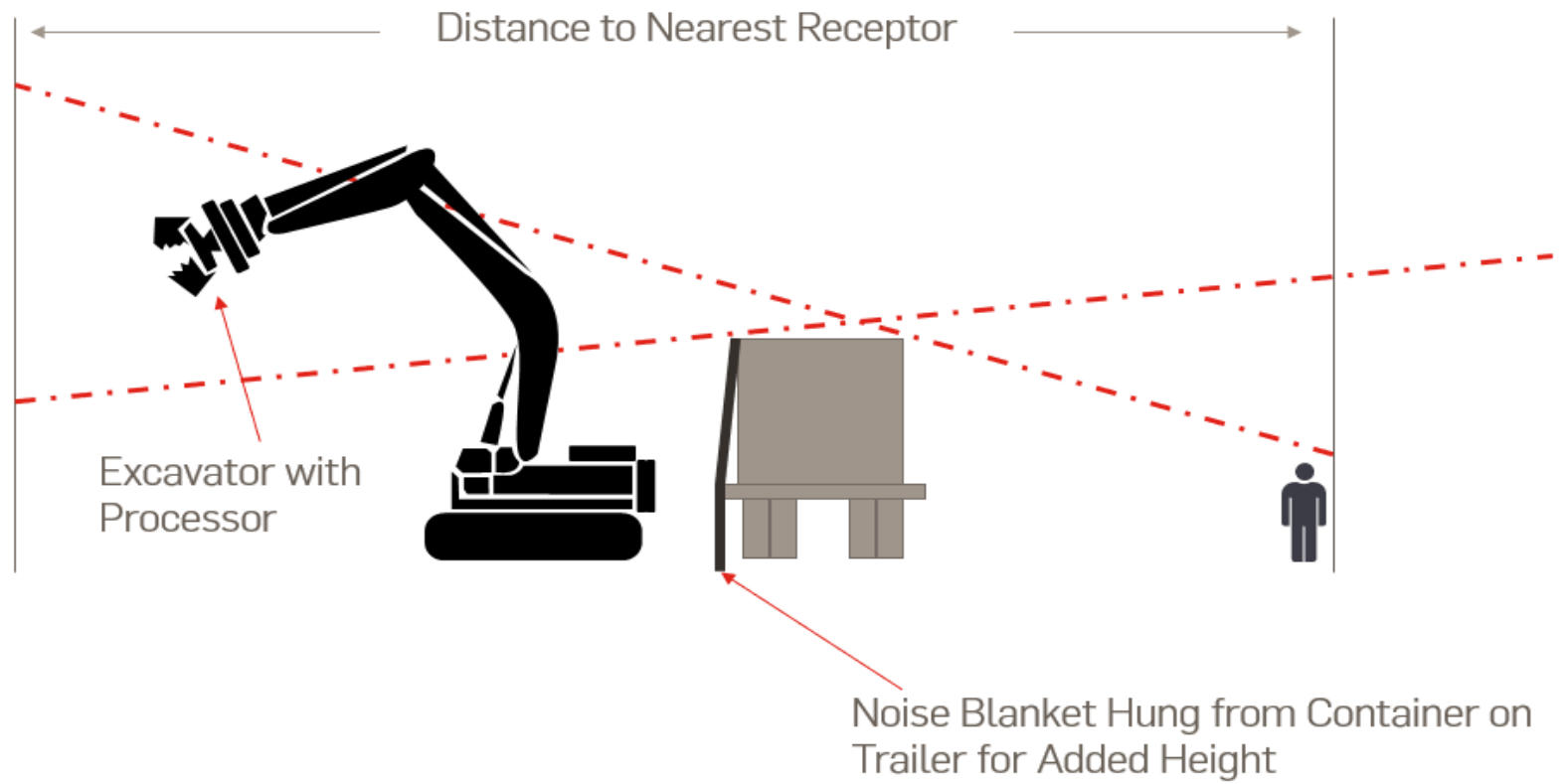
# Michael Driscoll School Project

## Dust Mitigation Processes—January 2023





# Noise Mitigation



# Michael Driscoll School Project

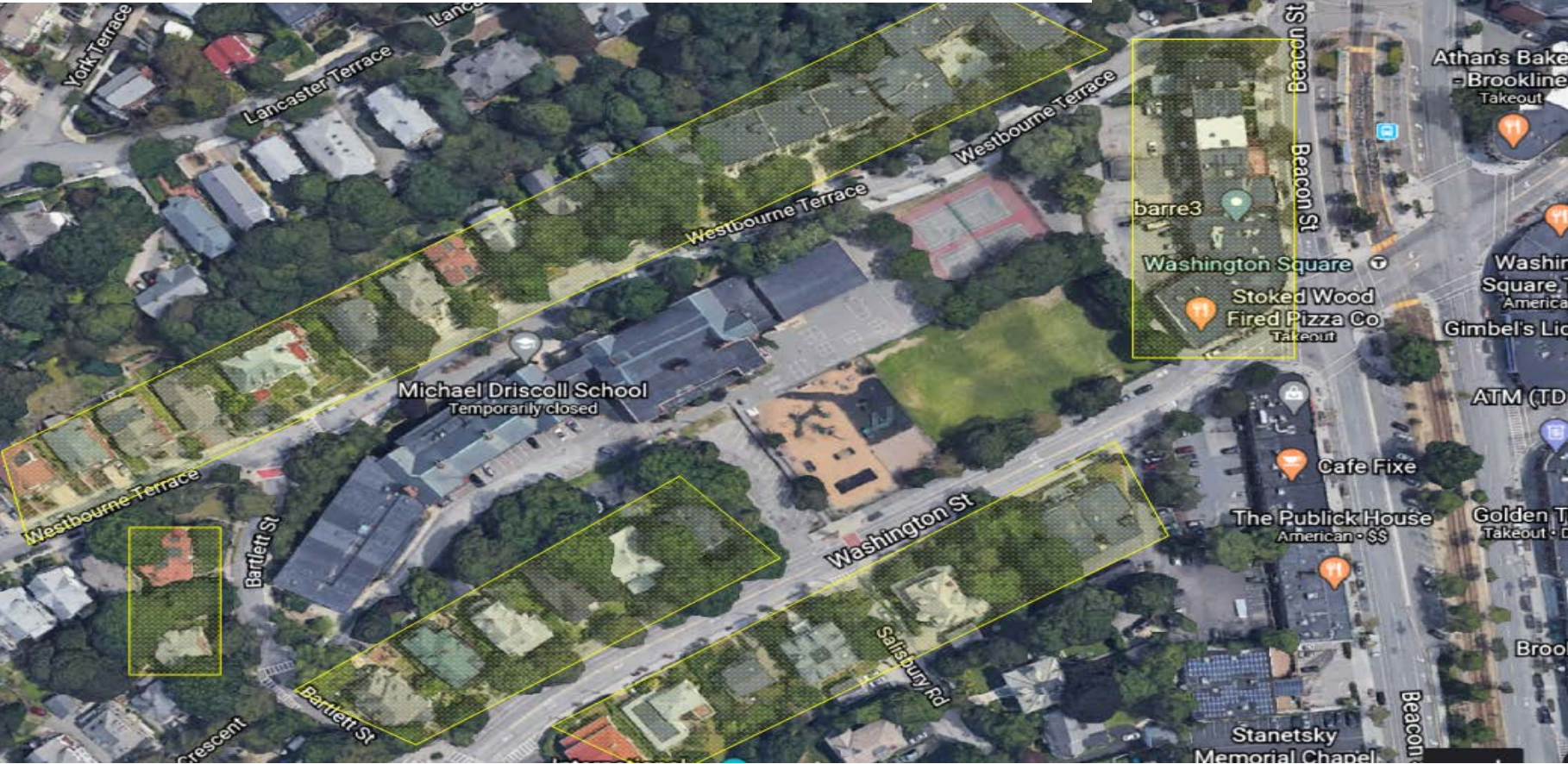


Demobilize October 2023



# Michael Driscoll School Project

## Preconditions Survey Area







## It starts...NOW

- > Education
- > Listening
- > Police/Fire  
Coordination
- > Project Website
  - Neighborhood Portal
    - » Photos
    - » Look Aheads
    - » NO SURPRISES

# Community Engagement



# Community Engagement: Up-to-Date Communications

The screenshot shows the Brookline Public Schools website. At the top, there is a dark blue navigation bar with links for DISTRICT HOME, OUR SCHOOLS, and TRANSLATE. Below this is the logo for PUBLIC SCHOOLS of BROOKLINE and a search bar. A secondary navigation bar lists various site sections like HOME, DISTRICT, SCHOOLS, STUDENTS & FAMILIES, SCHOOL COMMITTEE, HUMAN RESOURCES, BUILDING PROJECTS, and STAFF PORTAL. The main content area features a sidebar with 'BUILDING PROJECTS' and a list of items including 'Long-Term Capital Plan', 'BHS Expansion Project', and 'Driscoll School Building Project'. The main content is titled 'Driscoll School Building Project' and includes a video player showing an aerial view of the school building and a playground. To the right of the video are three buttons: 'FAQ'S', 'SUBMIT A QUESTION OR COMMENT', and 'SUBSCRIBE TO EMAIL UPDATES'. Below these buttons is a section for 'Upcoming Meetings' with a small image of the school's contact information.

Visit:

<https://www.brookline.k12.ma.us/Page/2353>

Submit a question or comment

Subscribe to email or text updates

# Community Engagement: Project Newsletters

- Project Updates
- Photos
- Look Aheads
- Milestone Achievements
- Community Impacts





# Questions & Answers