

PUBLIC SCHOOLS OF BROOKLINE



**Brookline High School Expansion Project
Presentation to Brookline Town Meeting
May 23, 2017**

**George Cole, BHS Building Committee co-chair
Susan Wolf Ditkoff, BHS Building Committee co-chair
Selectman Nancy Heller, BHS Building Committee co-chair
Carla Benka for the Advisory Committee**

BHS Expansion Building Committee



Nicholas Gerszten
Bobbie Knable
Jordan Meranus
Nancy O'Connor
Matthew Oudens
Ian Roffman

BHS Student, Neighbor
Advisory Committee
Parent (Heath)
Parks and Recreation Commissioner
Neighbor, Town of Brookline Planning Board
Parent (Pierce, BHS)

Andrew Bott
Anthony Meyer
Jenee Ramos
Mary Ellen Dunn
Nicole Gittens
Mel Kleckner
Dan Bennett
Ray Masak

Superintendent of Schools
BHS Headmaster
BHS Dean
Deputy Superintendent for Administration and Finance
Deputy Superintendent for Teaching and Learning
Town Administrator
Building Commissioner
Project Manager, Building Department

George Cole
Susan Wolf Dittkoff
Nancy Heller

Building Commission, co-chair
School Committee, co-chair
Board of Selectmen, co-chair

BHS Enrollment: years 1976 – 2025

~2600
students



Robust public input helped prioritize our community's values



Eight (8) BHS Building Committee meetings (2017)

- Weekly meetings with educators and staff

Nine (9) open community meetings (2015-17)

Two (2) all-day workshops (100+ educators, residents, students/alumni)

Engaged Town Commissions (dozens of public meetings 2015-17)

- School Committee & Board of Selectmen
- Parks and Recreation Commission
- Advisory Committee, Building Commission, Transportation & more

Educational vision – key themes



Maintain the best of BHS

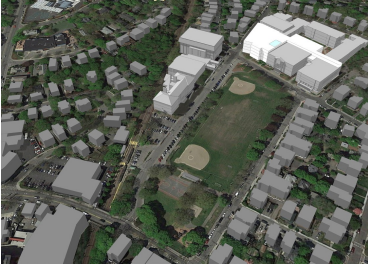
- One centrally-located school unifies our town
- Unmatched number of diverse course offerings in one campus – challenge & inclusion
- Small school feel – every student is known and finds their place

Teach “the way we want to teach” starting now, through 2020 and beyond

- Better collaboration among disciplines – relevant, project-based learning
- Bigger, smaller, and more flexible spaces for teaching and learning
- Safe, cutting-edge science / STEAM facilities

Three options studied, then a new “Option 4”

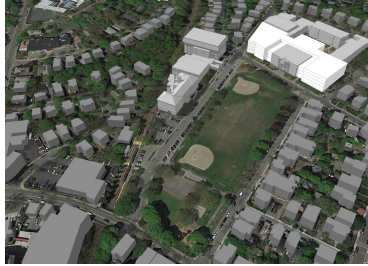
Option 1



Minimum
classroom
capacity need

\$182 million
(no Tappan)

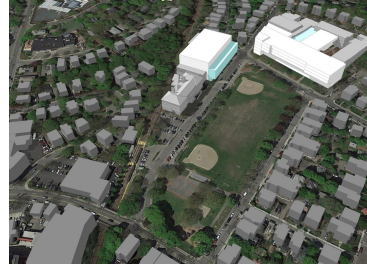
Options 2 a-b



Meet State
Standards;
with or without
Tappan Gym
renovation

\$212 - \$271 million

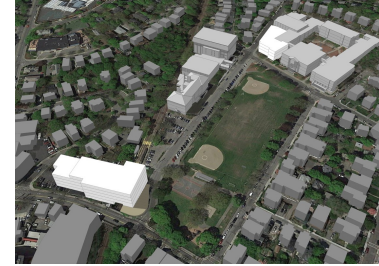
Option 3



Full BHS Educational
Plan vision

\$348 million

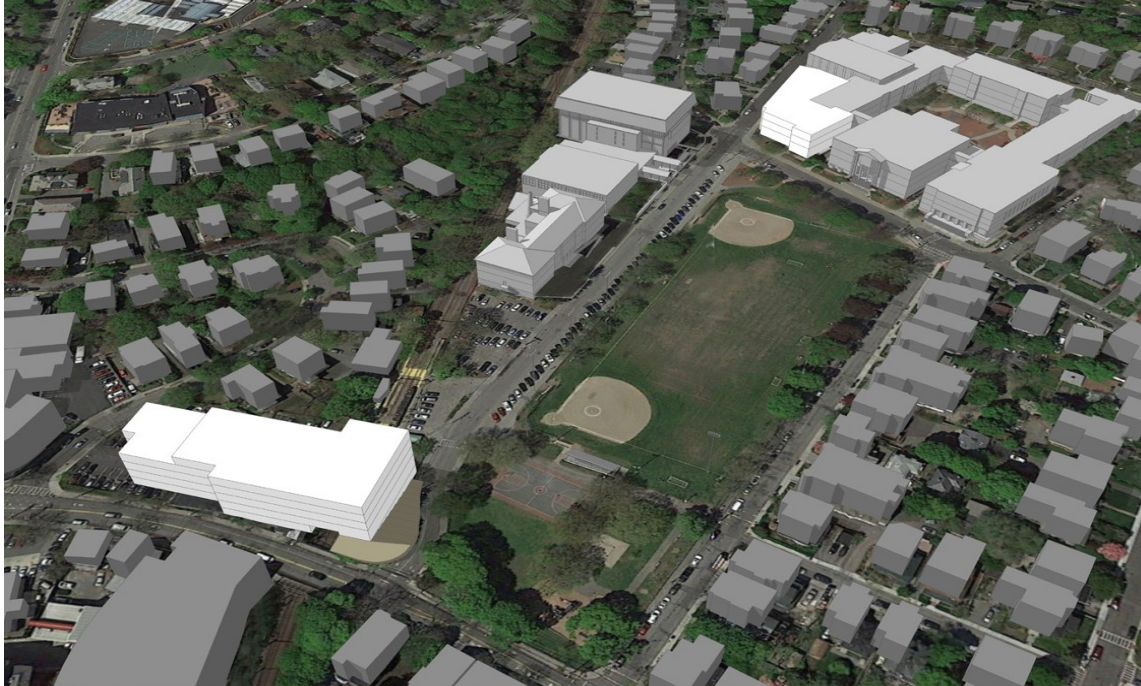
Options 4a-d



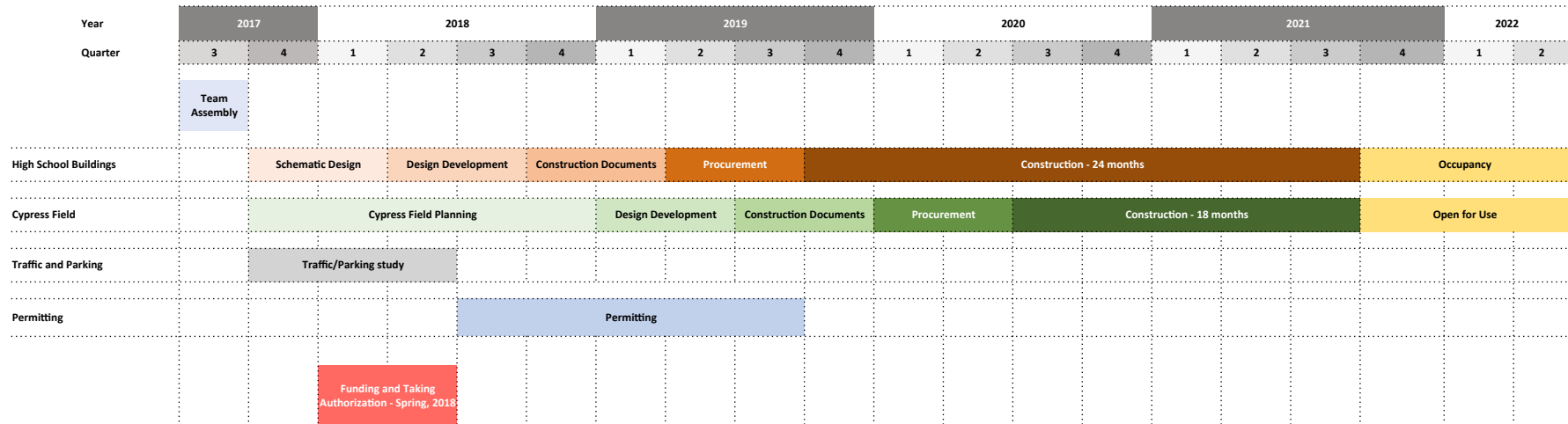
111 Cypress;
+ modest Quad
renovations;
with or without
MBTA overpass

\$105-137 million*
(Tappan, site cost TBD)

Unanimous Building Committee recommendation BHS Campus Option 4D, \$137 million (approx.)



Estimated Project Timeline



Next Steps Beyond Schematic Design for The High School Buildings

High School Buildings

- Site Acquisition
- MBTA
- Tappan Street Gym
- Debt Exclusion/Override

Concurrent Projects

- Cypress Field
- Traffic and Parking Study