

BROOKLINE HIGH SCHOOL EXPANSION

BHS EXPANSION ADVISORY COMMITTEE MEETING
April 22, 2019



3/27/2019 BUILDING ADVISORY COMMITTEE MEETING

COMMENTS AND SUGGESTIONS FROM NEIGHBORS AND COMMUTERS

Livable Streets
Rep. Tommy Vitolo ~30 people
Scott Englander Tuesday pm

Deborah Rivers: summary
Snow fencing was put up where the proposed fencing would be and people trampled it
Presented by Livable Streets
Cattle chute funnel of users
Path from Cypress Field not straight
Larger plaza at base of the stairs
Tappan access restricted
Platform had crossings @ 2 ends not middle
Brynton Rd - ~~the~~ ^{Some} B.R. neighbors don't want emergency only, but many opinions
Most people walk to T
3200 T riders

30 MOP
7 staff (at)
Neil, Nancy, Helen

Now

- ① Lack of shelter from elements
- ② Lack of convening space,
- ③ Circuitous/dangerous access from Tappan
Misaligned crosswalk across field
High vehicle speed on Tappan
- ④ Dangerous env. for students (cars)
- ⑤ Lack of ADA routes from Rt 9
- ⑥ Too narrow inbound platform
- ⑦ Irregular train stop position/block access points
- ⑧ No covered bike parking ^{⑨ Can't get there from path sides}

New concerns Above not solved plus

- Prioritize commuters
- Stressful experience/barriers
- Tappan sidewalks too narrow
- Egress only path to Brynton restricts access
- People will walk in driveway to Brynton
- Move the building?
- No need for parking?

Strawman design

- Replace 14 spots w/plaza
- Eliminate fencing, seating or landscaping
- Avoid desire lines on plaza/path to park
- Widen sidewalk around corner
- Brynton path access
- ? Narrow Tappan to slow traffic?? Elevated xwalks
Racing to catch green light?
- Can park design respond to this need (it's early stage)
- Concern from abutters of too much lighting if it's a full entrance (MSTA path)
light pollution
- Bike lanes re: ^{plus} new concrete move drop off line?
- ? Don't need fencing at other stations?

Questions

- * Can there be an entrance from the HS? ^{Clint}
? Can it be accessed along its length?
- * What is a Brookline path? ^{Kim}
Beaconsfield path
Davis path (puts lights down)
- * Fence behind Brynton homes/attractive ^{Hugh}
- * Recharging scooters?
- * (Scott E) heard ^(MSTA) they don't care about parking but they care about access/heavy machinery (2 are handicapped/increase those?)
- * Handicapped access to building
- * Emergency egress/restriction on path? ^{John E.}
- * Fences - unsafe if there is an emergency (fire, shooter)
- * Tunnel artwork? Mosaic/disourage graffiti/interior
Where else a raised platform/Fencey?

- * Don't eliminate bc you think ^{Neil}
there is nearby parking
- * Need handicapped parking ^{Nancy}
- ? Hours on the path ^{Bpm?} ^{Julie}
- * How will accessible entries from Rt 9 ^{Ann}
- * Shelter + heat?
- new shelter/canopy
- new - canopies w/ticketing (not closed)
1/3 platform under the building
- * Access for 2 years?
- * Enclosed shelters? ^{Scott}
- Stairs covered/overhang? ^{Rudolph}
No use by wheelchairs



ROUTE TO MBTA STATION FROM DAVIS AVE: EXISTING CONDITION



ROUTE TO MBTA STATION FROM DAVIS AVE: PREVIOUS DESIGN



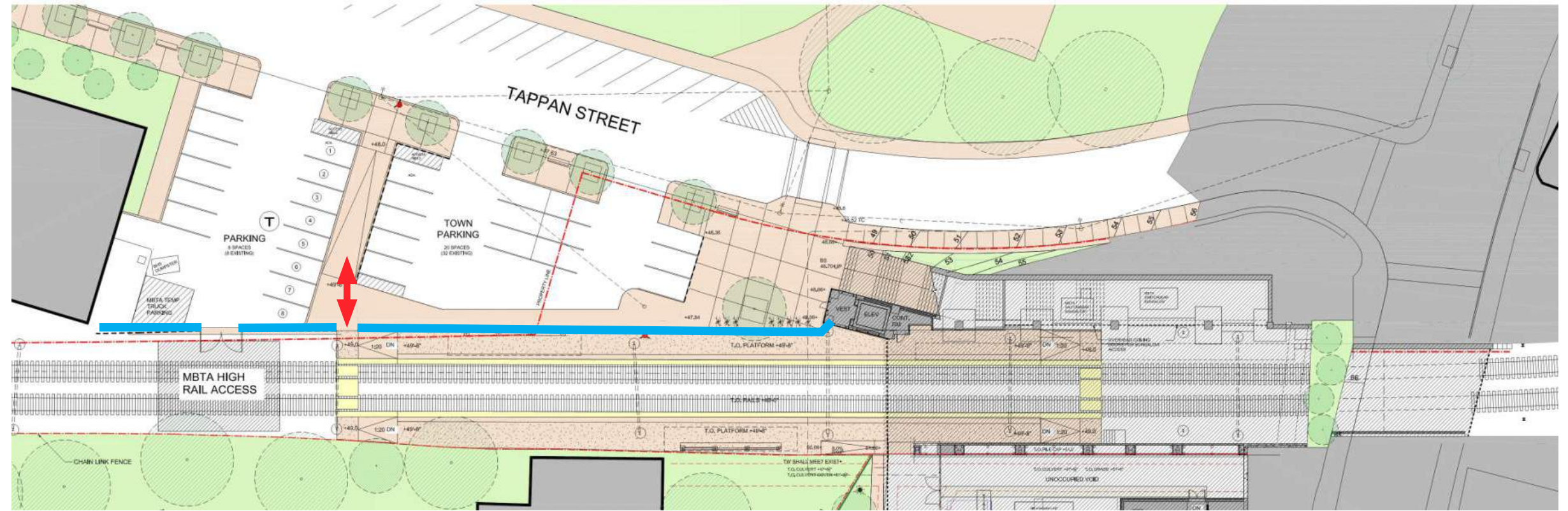
ROUTE TO MBTA STATION FROM DAVIS AVE: PROPOSED DESIGN



CYPRESS BUILDING PLAZA: PREVIOUS & PROPOSED DESIGN COMPARISON

PREVIOUS DESIGN

- 20 Town parking spaces
- 8 MBTA parking spaces maintained by Town (revenue goes to Town)

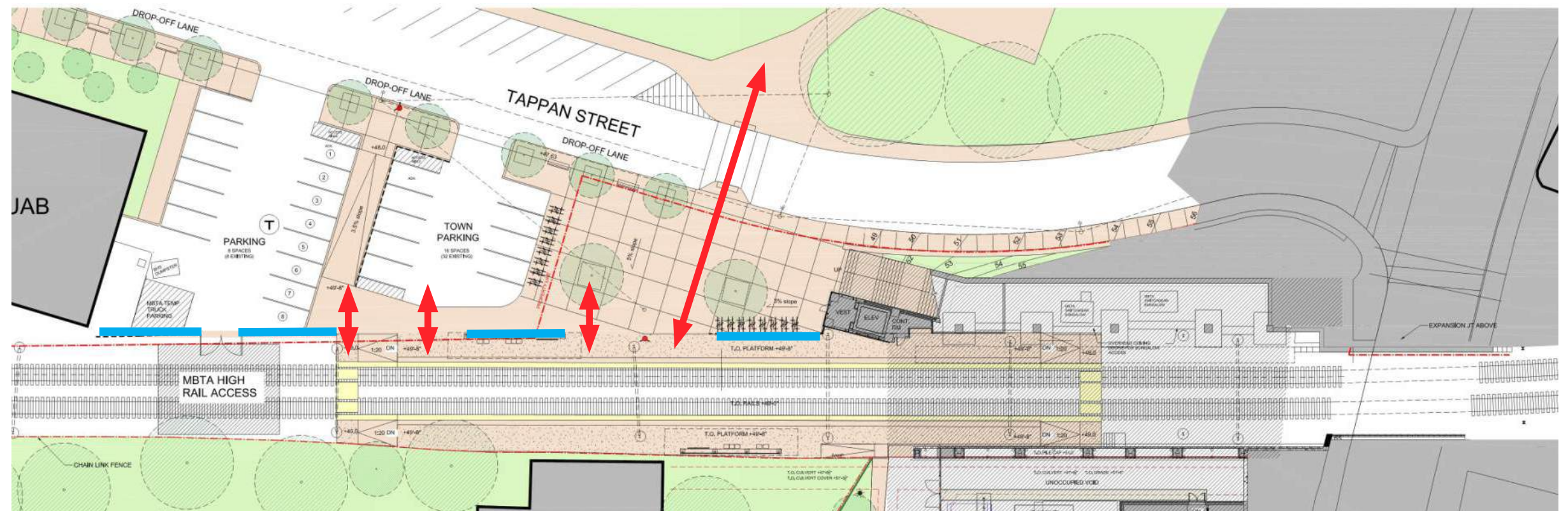


PROPOSED DESIGN

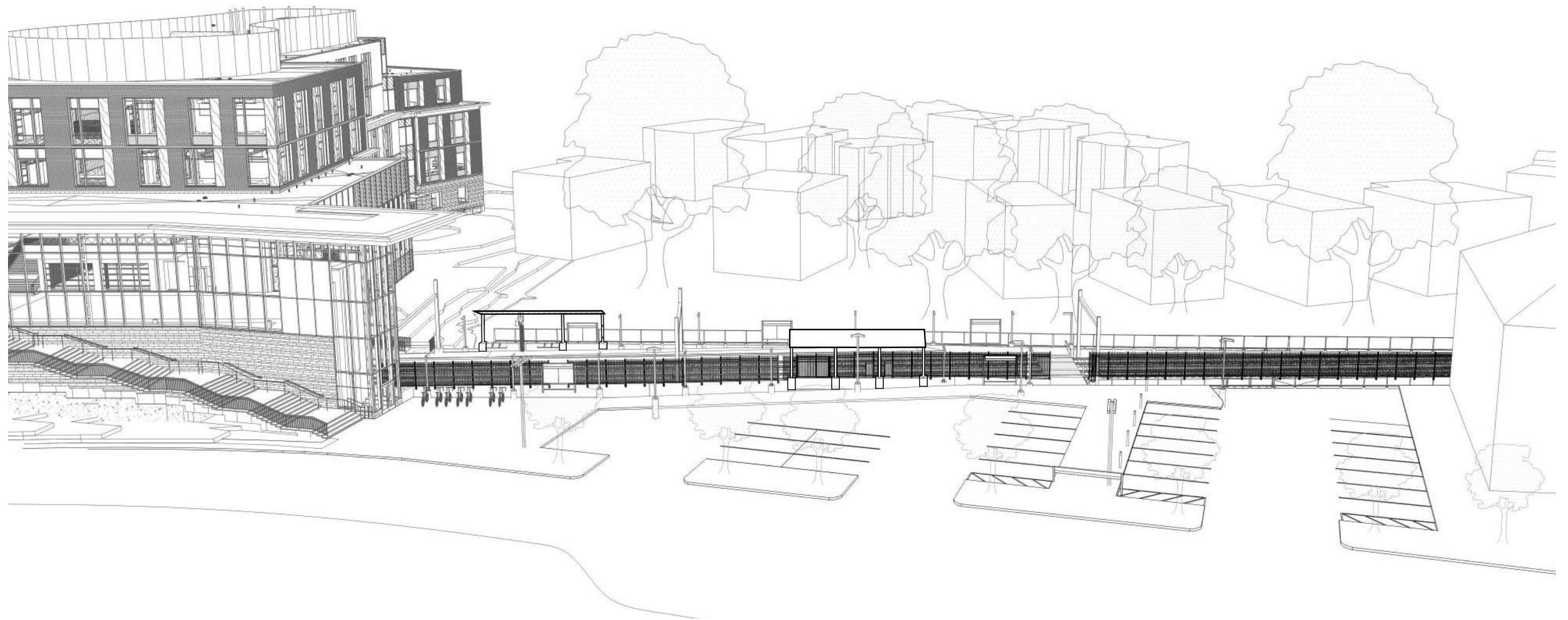
Pending budget approval of plaza and Transportation Board approval of replacement neighborhood parking permits within 0.5 mile of High School.

- 16 Town parking spaces
- 8 MBTA parking spaces maintained by Town (revenue goes to Town)
- Crosswalk moved to align with Cypress Field Path (3 parking spaces removed at north side of Tappan St)
- New drop-off lane
- Enlarged Plaza
- Fence, bike racks at level change at Cypress Building elevator
- ~80 feet of access to MBTA platform

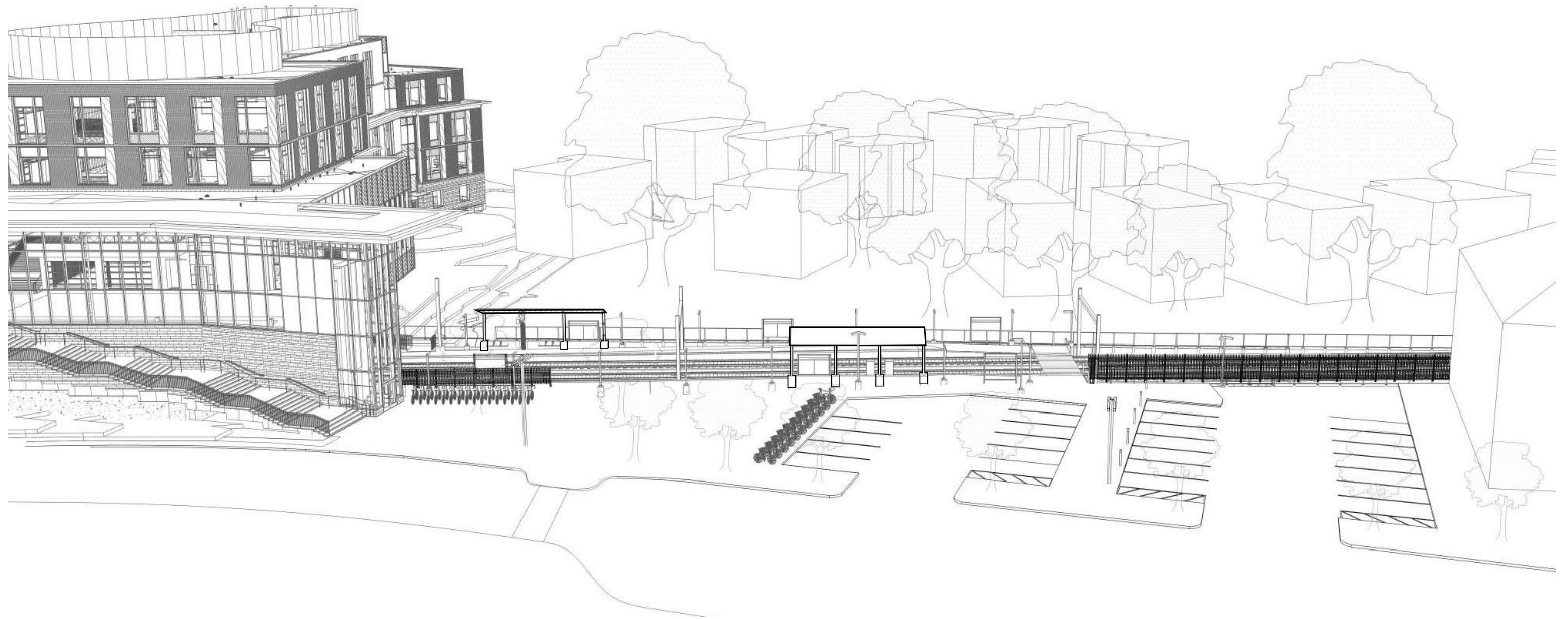
SOME FENCING TO ALLOW DIRECT ACCESS TO PLATFORM



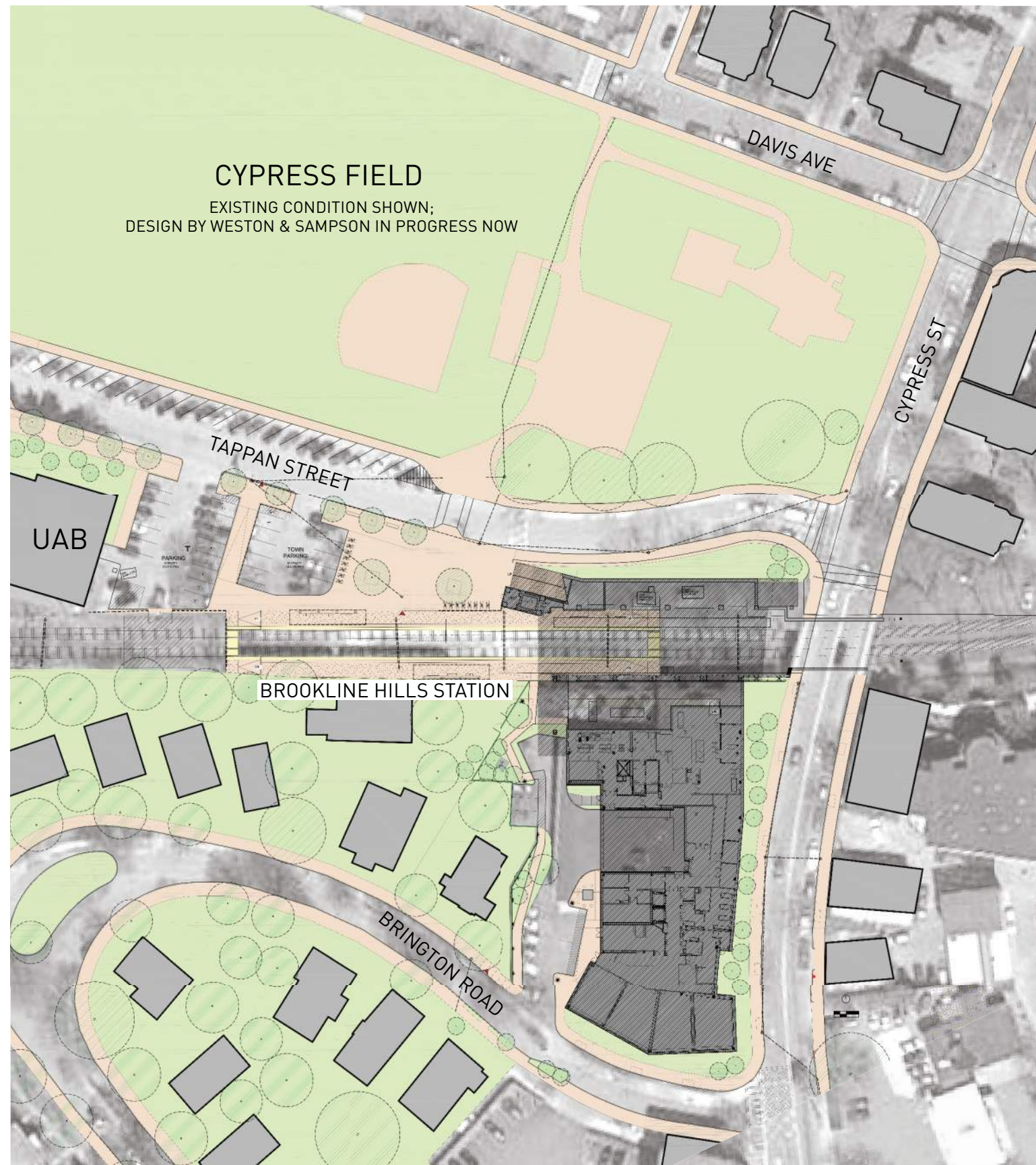
PLAZA RENDERING: PREVIOUS DESIGN



PLAZA RENDERING: PROPOSED DESIGN



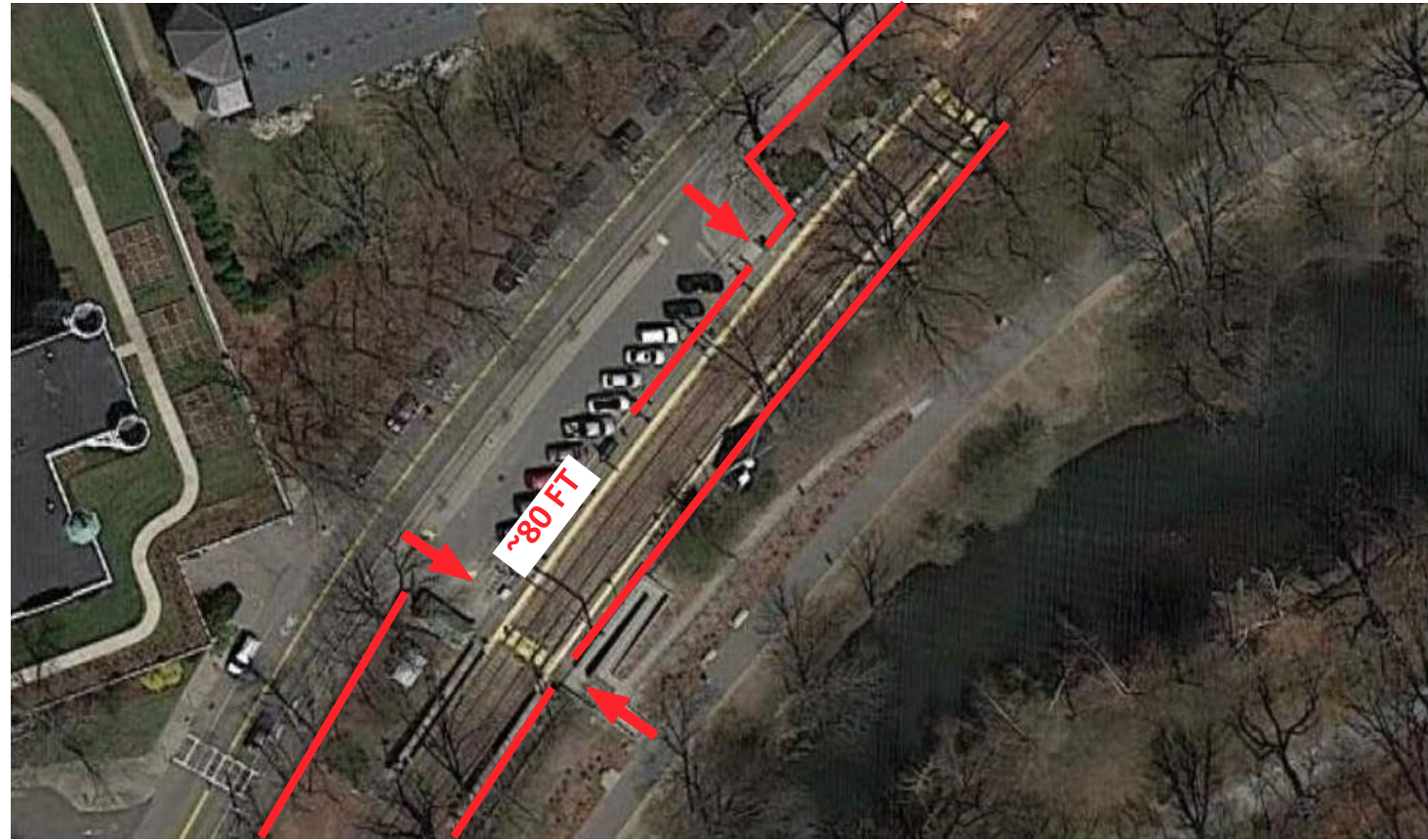
CYPRESS BUILDING PLAZA: PROPOSED DESIGN



PRECEDENT: BROOKLINE VILLAGE STATION



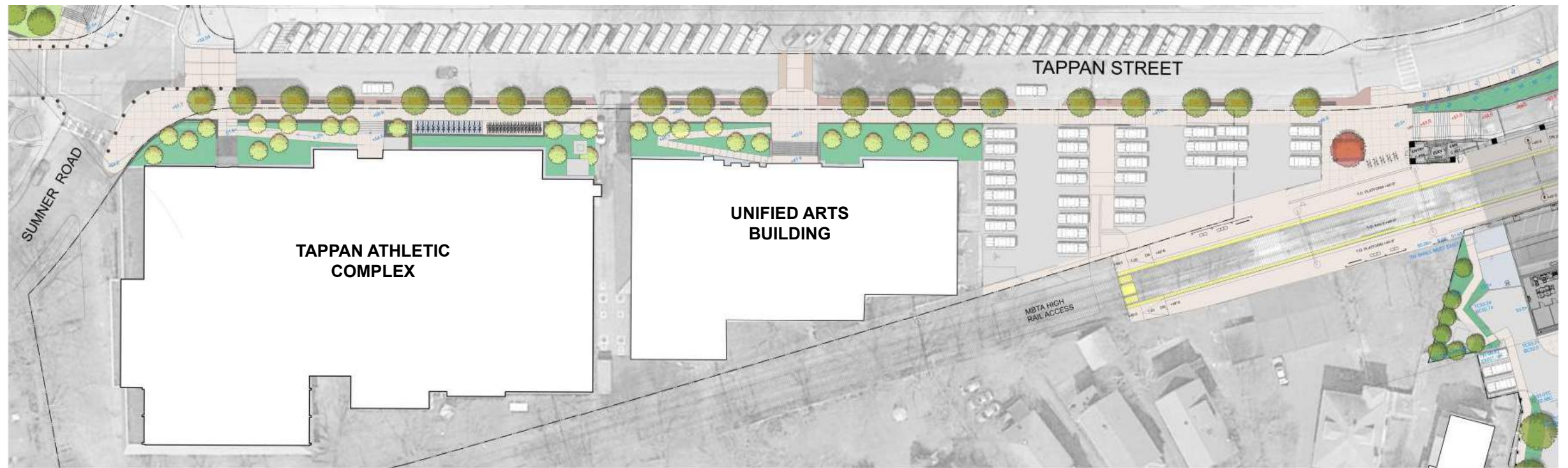
PRECEDENT: LONGWOOD STATION



TAPPAN STREETScape: PREVIOUS VS. PROPOSED DESIGN

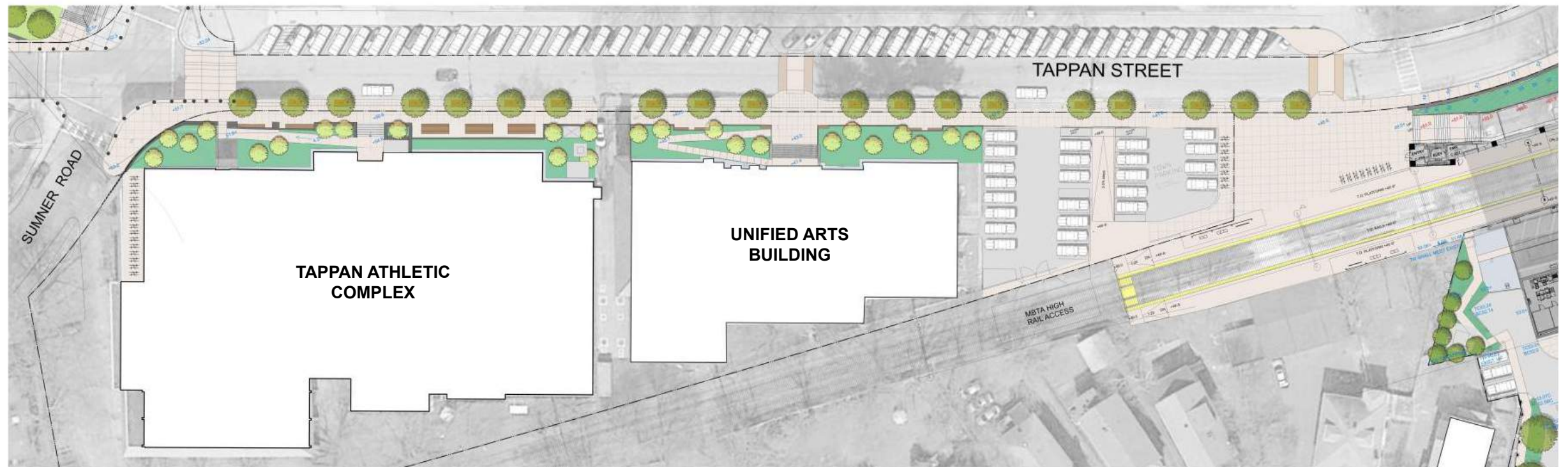
PREVIOUS DESIGN

- Benches at north edge of sidewalk
- 5' permeable paver strip adjacent to curb
- Compact plaza at Cypress Building



PROPOSED DESIGN

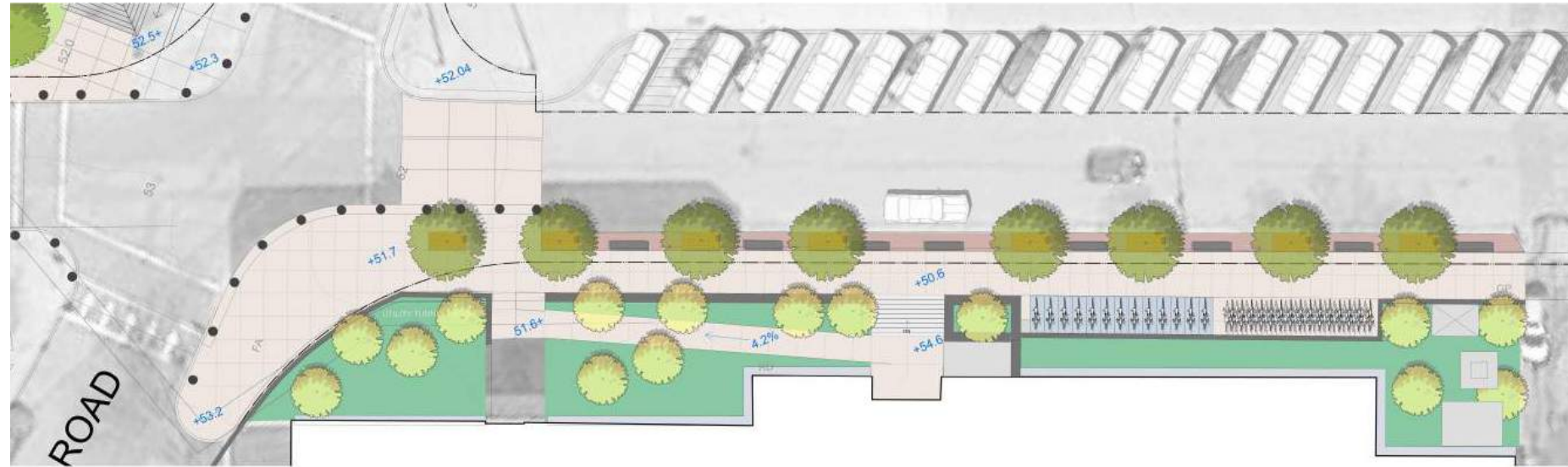
- Seat wall and benches at south side of sidewalk
- Elimination of permeable paver strip (difficult to maintain)
- Enlarged plaza at Cypress Building



STREETSCAPE AT TAPPAN GYM: PREVIOUS VS. PROPOSED DESIGN

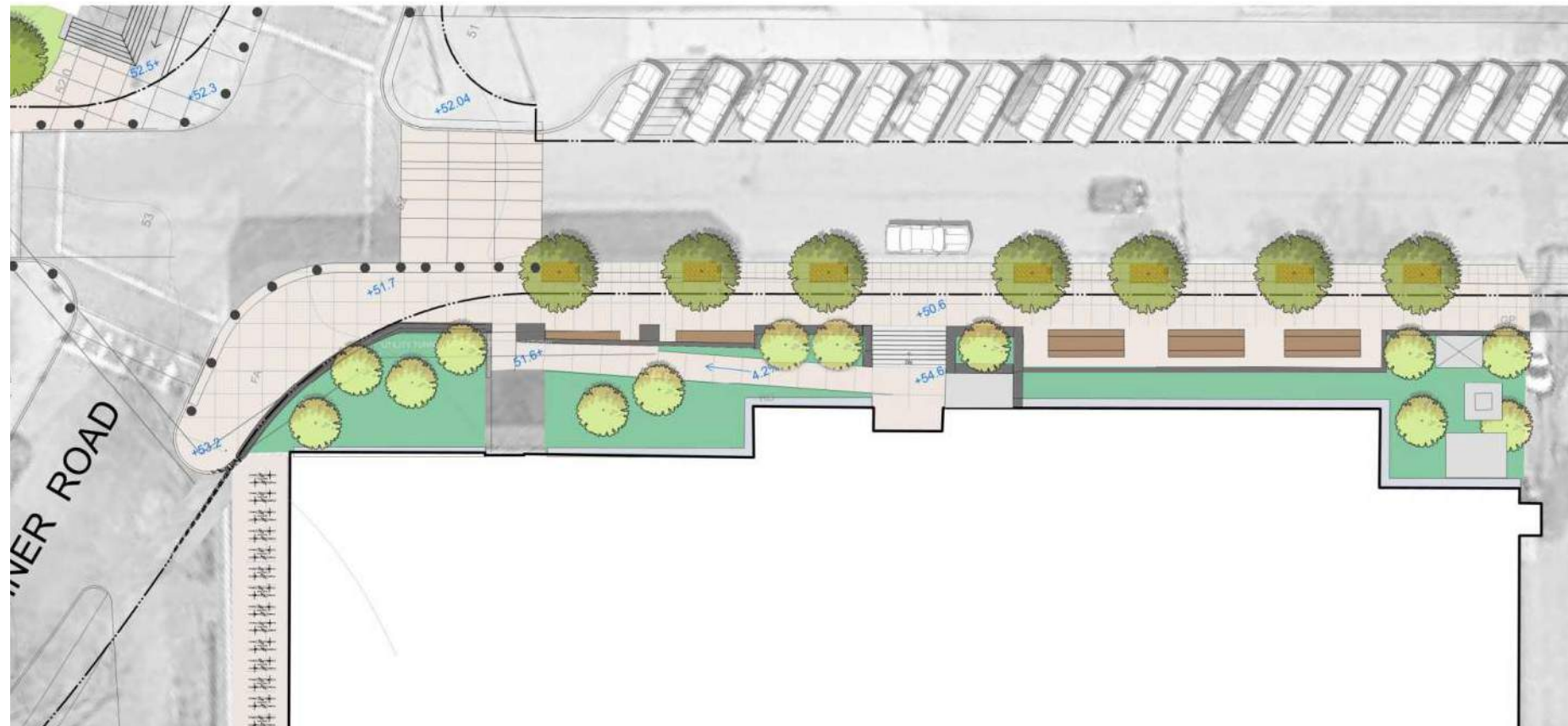
PREVIOUS DESIGN

- Short benches at north side of sidewalk



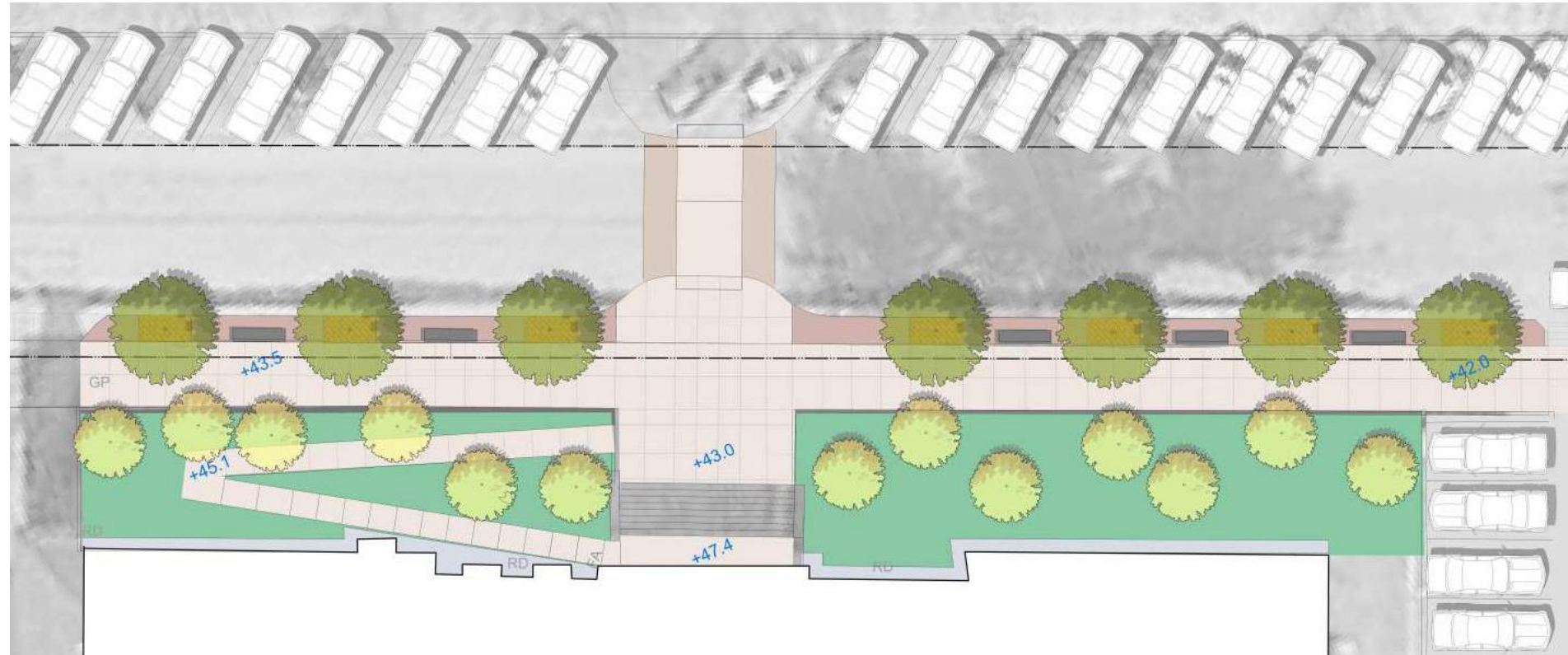
PROPOSED DESIGN

- 3 long benches integrated with seat wall
- Blue bikes moved to enlarged plaza by Brookline Hills MBTA station
- More bike racks



STREETSCAPE AT UAB: PREVIOUS VS. PROPOSED DESIGN

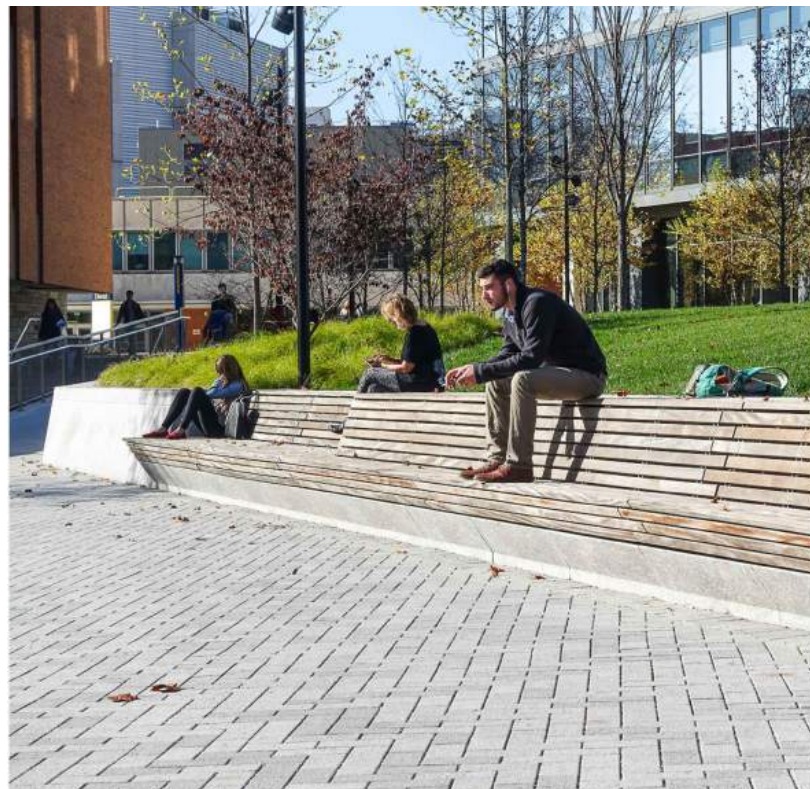
PREVIOUS DESIGN



PROPOSED DESIGN



STREETSCAPE: EXAMPLES OF STREET FURNITURE



BENCHES

MOVABLE TABLES & CHAIRS

COMMUNITY TABLES



BROOKLINE HIGH SCHOOL EXPANSION PROJECT



END

