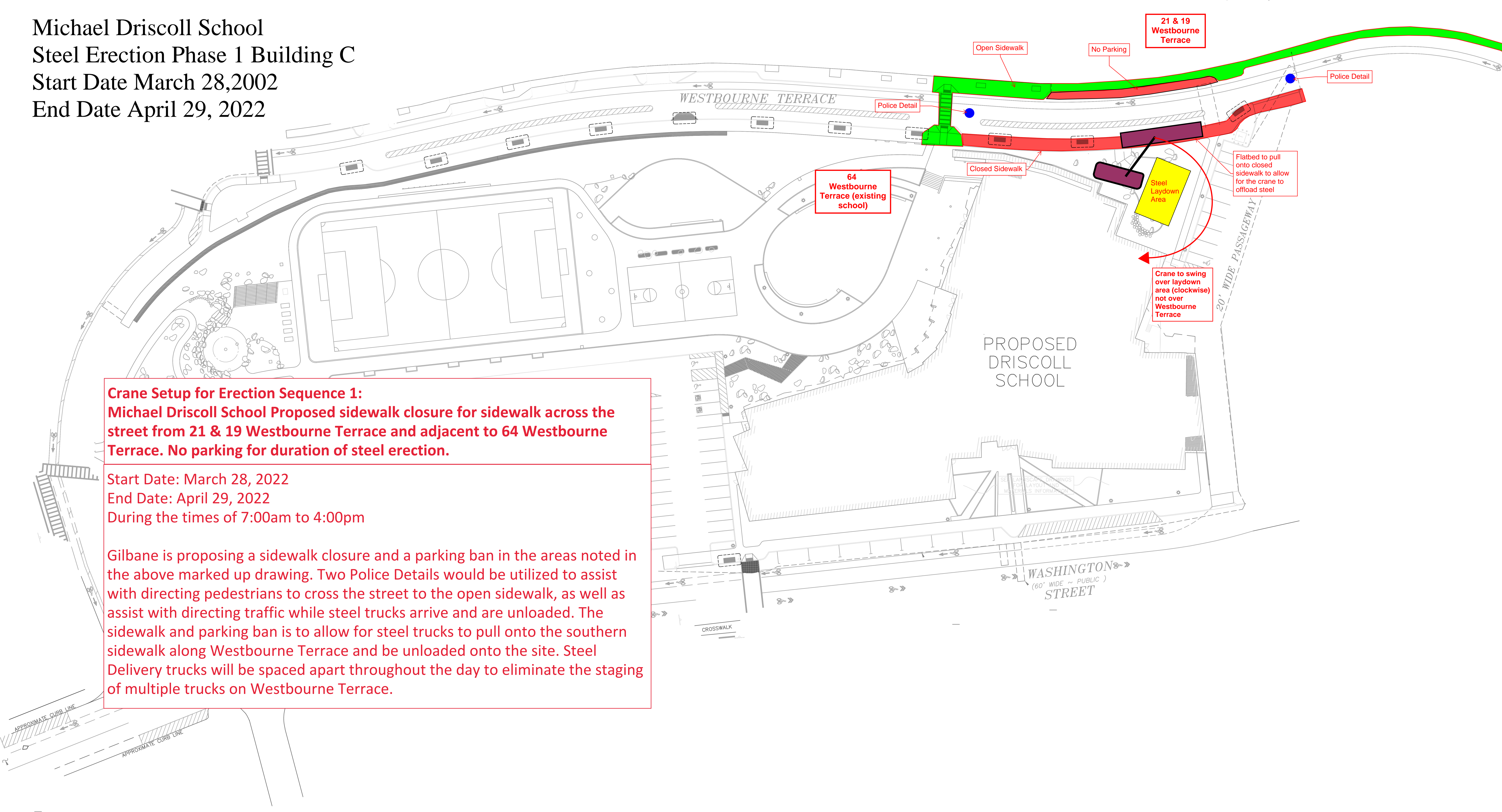


Michael Driscoll School
Steel Erection Phase 1 Building C
Start Date March 28,2002
End Date April 29, 2022



Crane Setup for Erection Sequence 1:
Michael Driscoll School Proposed sidewalk closure for sidewalk across the street from 21 & 19 Westbourne Terrace and adjacent to 64 Westbourne Terrace. No parking for duration of steel erection.

Start Date: March 28, 2022
End Date: April 29, 2022
During the times of 7:00am to 4:00pm

Gilbane is proposing a sidewalk closure and a parking ban in the areas noted in the above marked up drawing. Two Police Details would be utilized to assist with directing pedestrians to cross the street to the open sidewalk, as well as assist with directing traffic while steel trucks arrive and are unloaded. The sidewalk and parking ban is to allow for steel trucks to pull onto the southern sidewalk along Westbourne Terrace and be unloaded onto the site. Steel Delivery trucks will be spaced apart throughout the day to eliminate the staging of multiple trucks on Westbourne Terrace.