

# Proposed Baldwin 2 Section PK-8 School Brookline, Massachusetts

---

## Transportation Impact Assessment

Prepared by:



February 25, 2019

Transportation Board Meeting

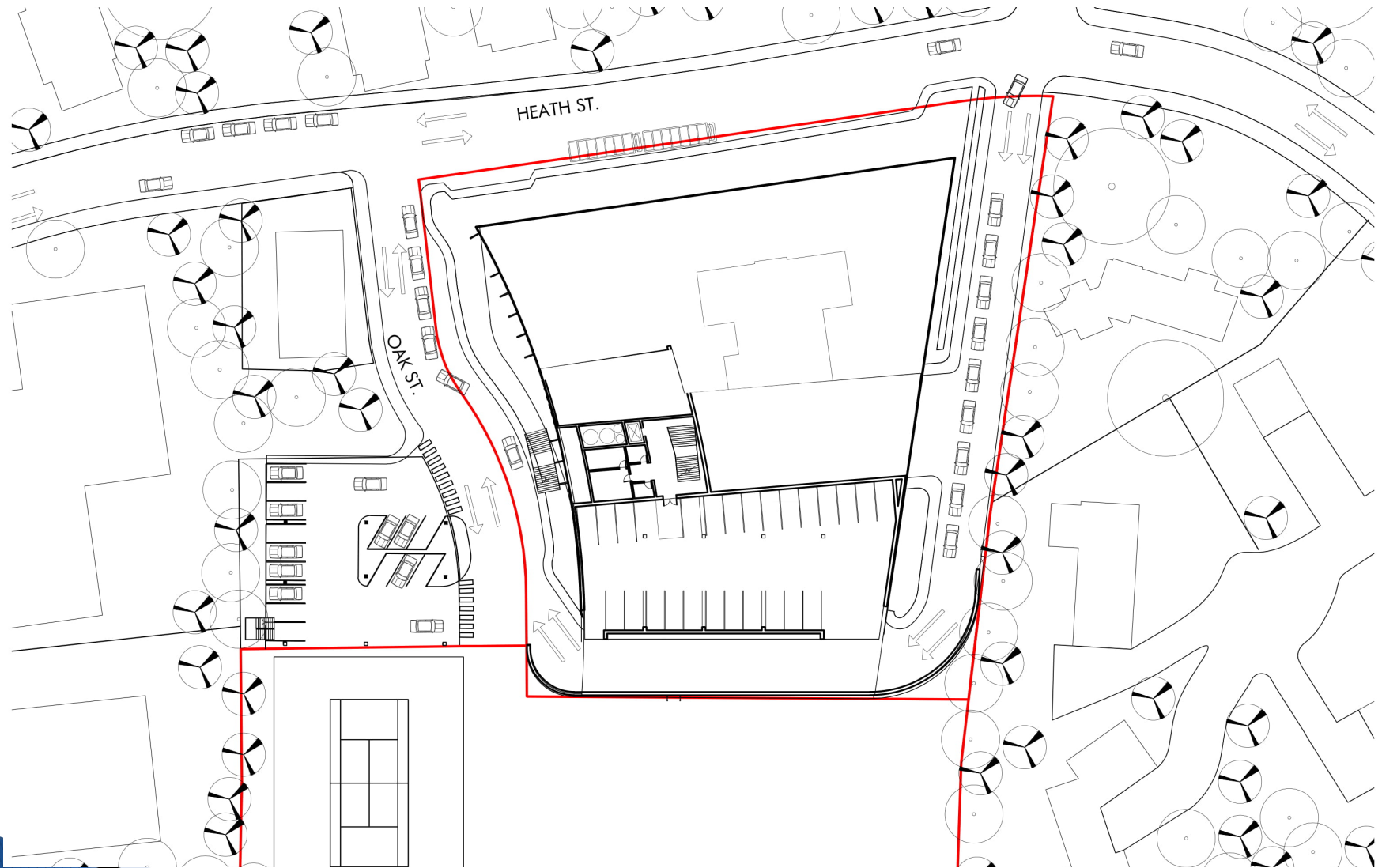


# Site Plan





# Site Plan







# Traffic Agenda Items

---

- Pedestrian Access
- Route 9 Crossings/MassDOT Review
- Bicycle Access
- Visitor Parking
- Emergency Vehicle Access
- Roadway Widths
- Trip Generation Assumptions
- Area Improvements

# Pedestrian Access





# Sight Distance

## Heath Street East Drive Crossing



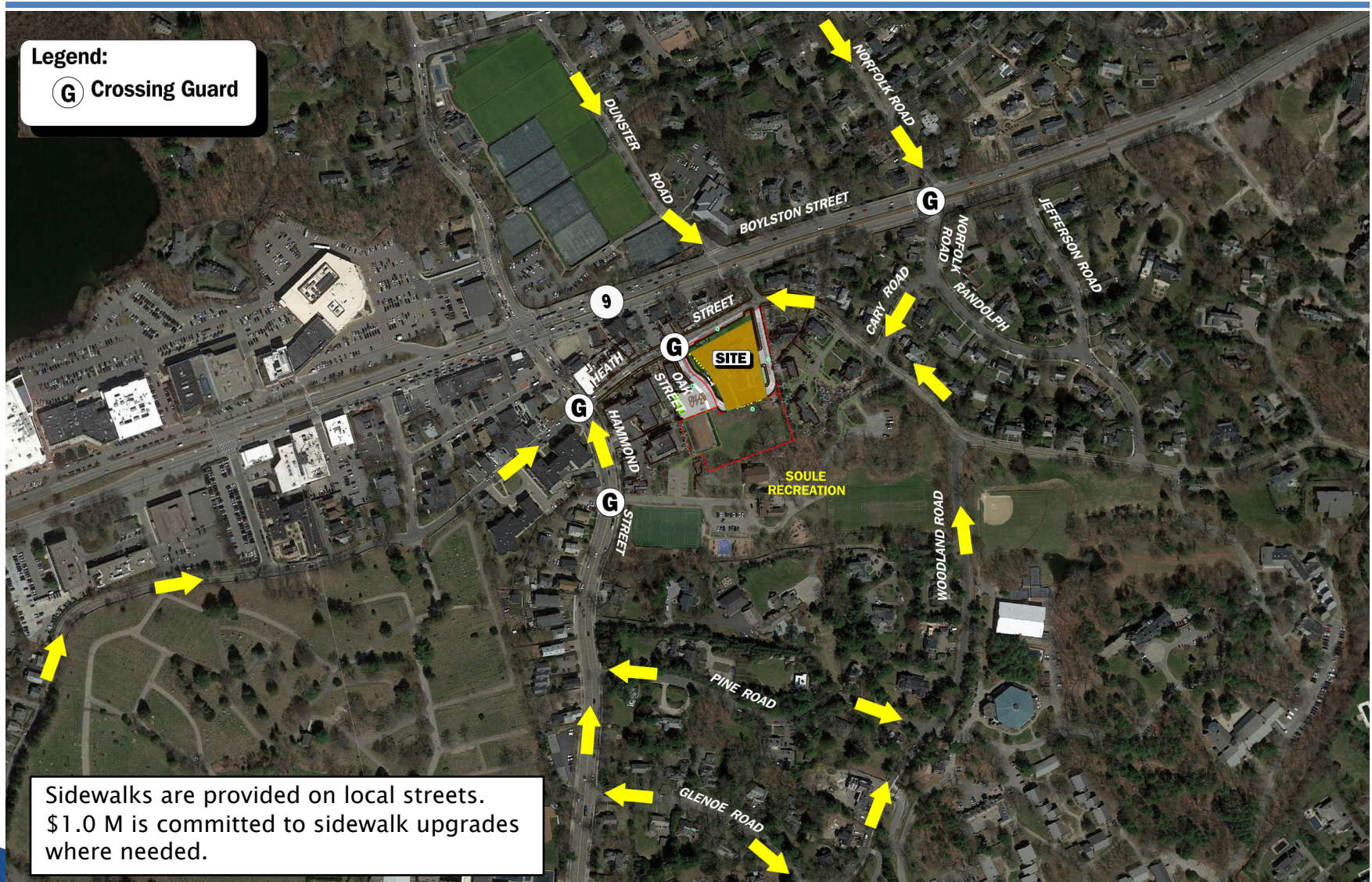
Intersection/Sight Distance Measurement	Required Minimum (Feet) 32 mph	Measured (Feet)	
		Sight Distance with Fence	Sight Distance without Fence
Heath Street at East Drive Loading Sight Distance: Looking to the east from the driveway	216'	170'	190'



# Pedestrian Routes

Legend:

**G** Crossing Guard



Sidewalks are provided on local streets.  
\$1.0 M is committed to sidewalk upgrades  
where needed.

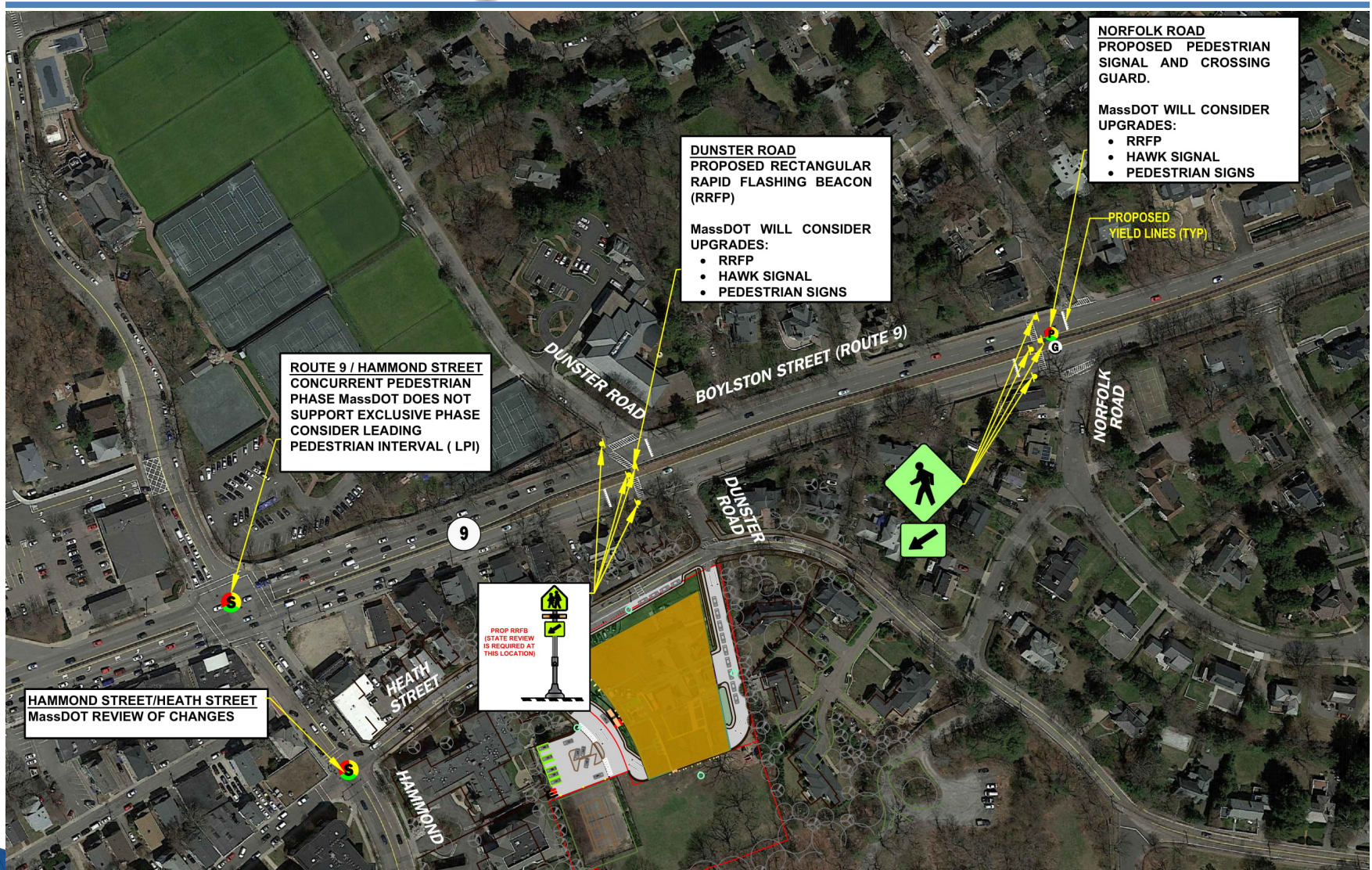


# Pedestrian Facility Deficiencies





# Route 9 Crossings/MassDOT Review





# MassDOT Route 9 Review - Summary

---

Mass DOT Will Consider the Following Upgrades:

## Route 9 and Hammond Street

- Leading Pedestrian Interval (LPI)

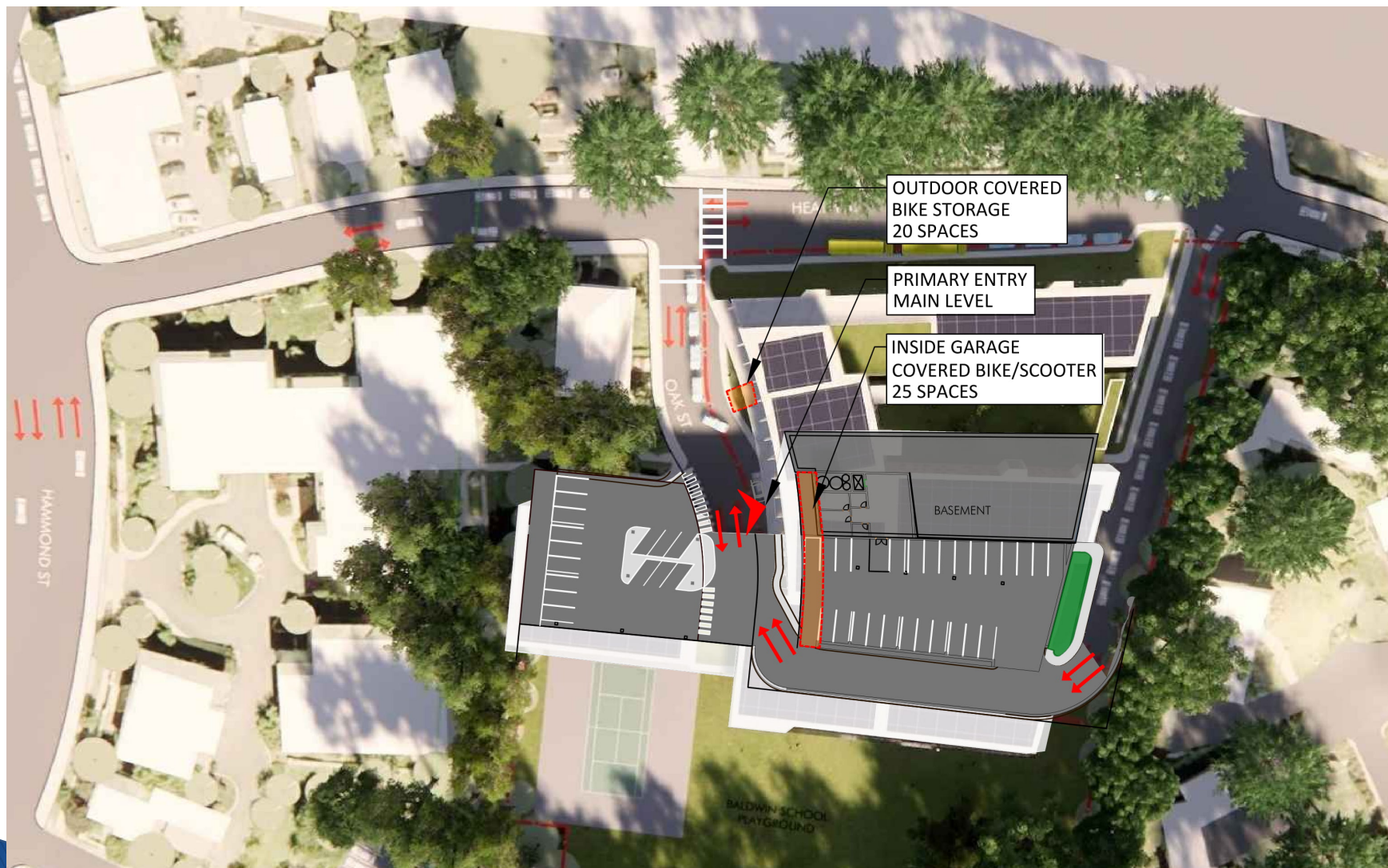
## Dunster Road

- Rectangular Rapid Flash Beacon
- HAWK Signal
- Pedestrian Signs

## Norfolk Road

- Rectangular Rapid Flash Beacon
- HAWK Signal
- Pedestrian Signs

# Bicycle Spaces





# Bicycle Access

---

## Facilities On-Site

- Bicycle Racks
- Shower Facilities

## Hammond Street – (Under Study)

- Road diet with bicycle lanes

## Woodland Road

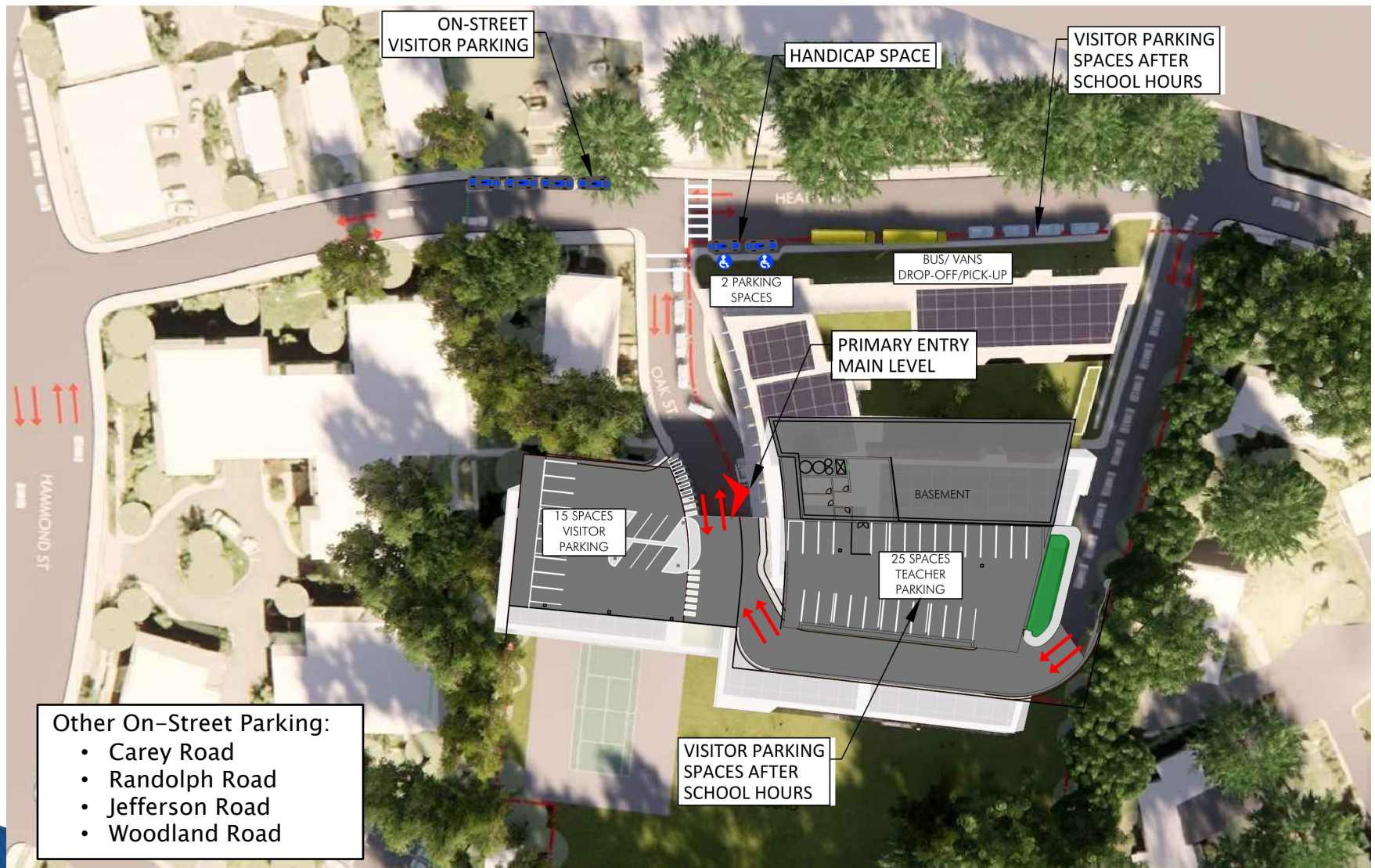
- Bike sharrow lane marking – Should be in consideration

## Heath Street – West

- Contra flow bike lane – Concept Level

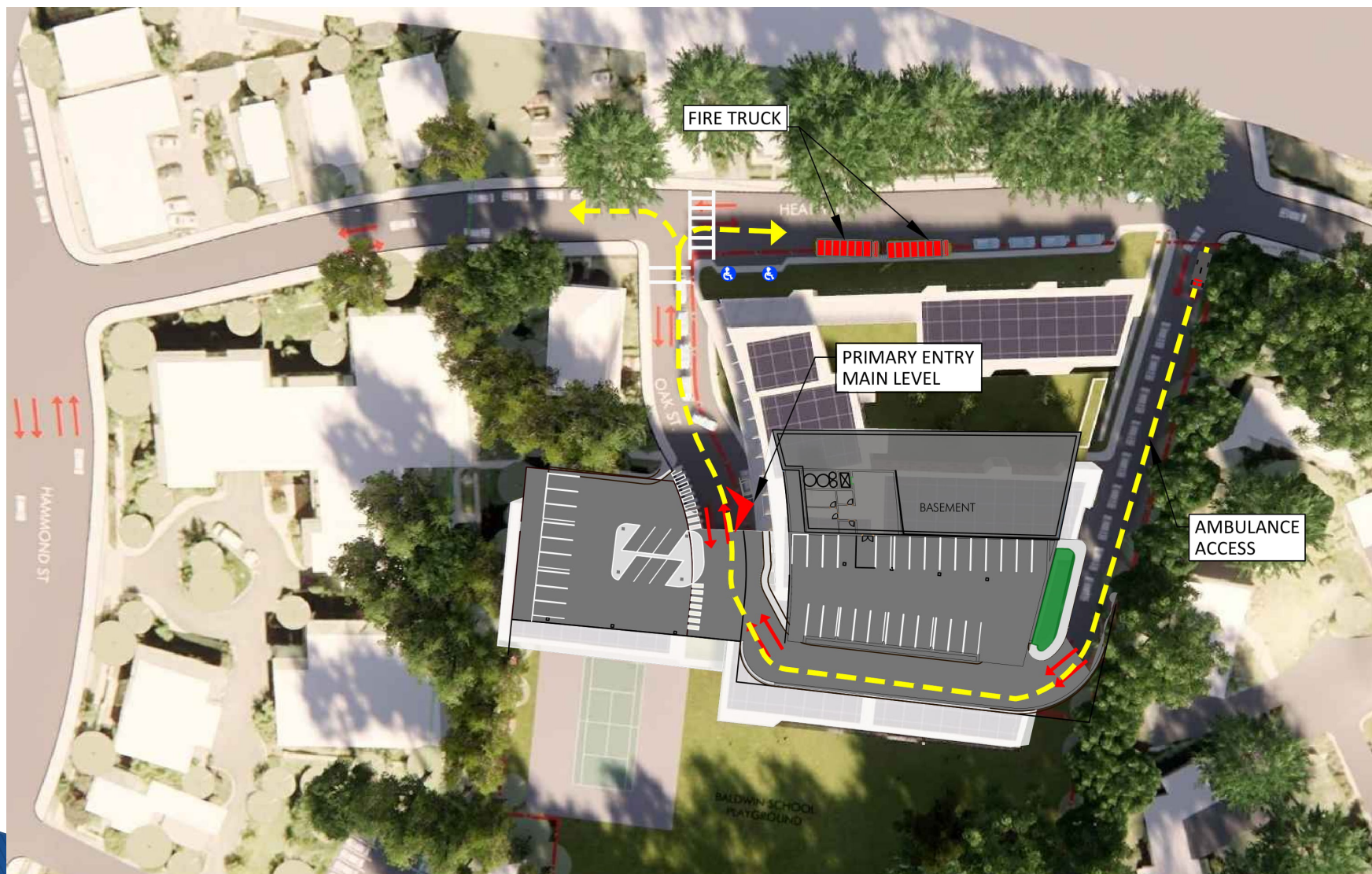
Install area bicycle sharrow markings as determined by the town.

# Visitor Parking



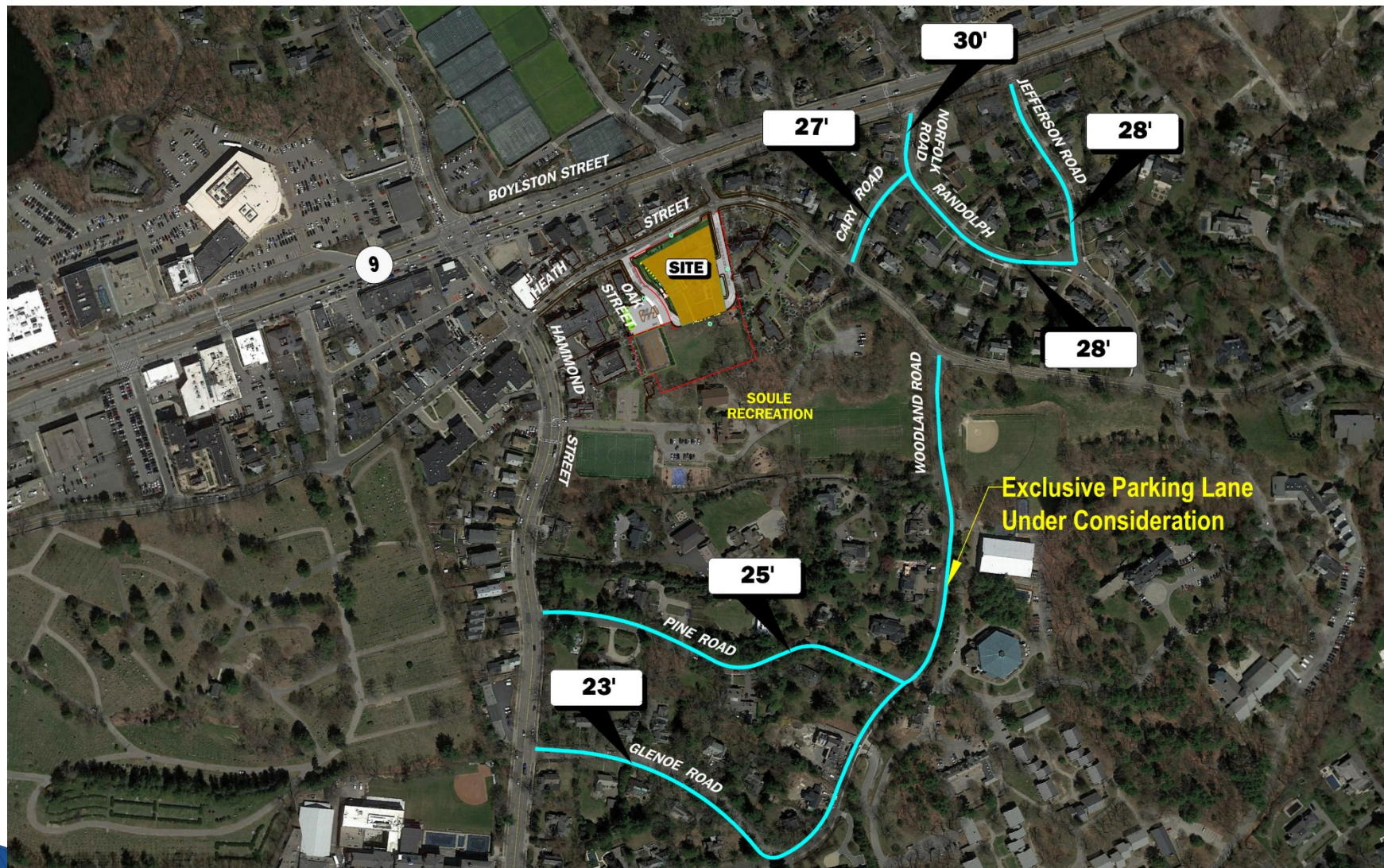


# Emergency Vehicle Access – Reviewed with Fire Department





# Roadway Widths





# Trip Generation

---

## ASSUMPTIONS

- 453 Students
- 86 Staff ( 74 arrive in peak hour 1.0 staff per car)
- 4% Daily absenteeism
- 25 students bus with METCO ( Arriving by Bus)
- 30 RISE students (9 Vans)
- 45 Brookline Early Education Program students (Arrive after 8:00 AM)
- 120 students bus – For every 20 less students bused – 14 more drop-off.  
Less than 1 per minute over peak 20 minutes.
- 50 students walk
- Student car occupancy of 1.45 student/car – Verified at Coolidge Corner School.



# Area Improvements

---

- **Horace James Circle Improvements**
  - Town Discussions with DCR
- **Woodland Road**
  - Alternatives Developed
  - Signal at Hammond Street
- **Hammond Street**
  - Road Diet under review
  - Bicycle Lanes
- **Heath Street (West)**
  - Contra flow bile lane – Concept level
- **Pedestrian and Bicycle Safety Upgrades**
  - Crosswalks, signage, signals, markings,
  - Route 9 pedestrian crossing safety upgrades
- **Area sidewalks upgrades**
- **Route 9 pedestrian crossing safety upgrades**
- **Hammond Street at Heath Street**
  - Signal Changes
- **Hammond Street at Route 9**
  - Consider Leading Pedestrian Interval (LPI)



# Area Improvements

---

- Pedestrian and Bicycle Safety Upgrades
  - Sidewalk upgrades
  - Crosswalks, signage, signals, markings,
  - Route 9 pedestrian crossing safety upgrades