



Advisory Capital Subcommittee &
Schools Subcommittee Joint Hearings
on Warrant Articles 2, 3, and 4

November 28, 2018 and November 29,
2018



Three-Part, Townwide Solution

PUBLIC SCHOOLS of
BROOKLINE



On June 13, 2018, after the 6-month Alternative Site Study, which included more than 20 public meetings, the consideration of 20 initial options and 14 final options, six public listening sessions, public hearings, and the work of five town departments and HMFH Architects, the Select Board, School Committee, and Ad Hoc Subcommittee of the Advisory Committee voted to:

1. **Driscoll** – move renovation and expansion into a 4-section school into the Feasibility Design Phase
 - ❖ Prioritizes maintaining the existing amount of per student play space
2. **Baldwin School** – move a “2-section” school into the Feasibility Design Phase
 - ❖ Includes early education, RISE, and native language support classrooms
3. **Pierce** – reaffirmed School Committee decision to request partnership with Massachusetts School Building Authority to renovate Pierce



At-a-Glance

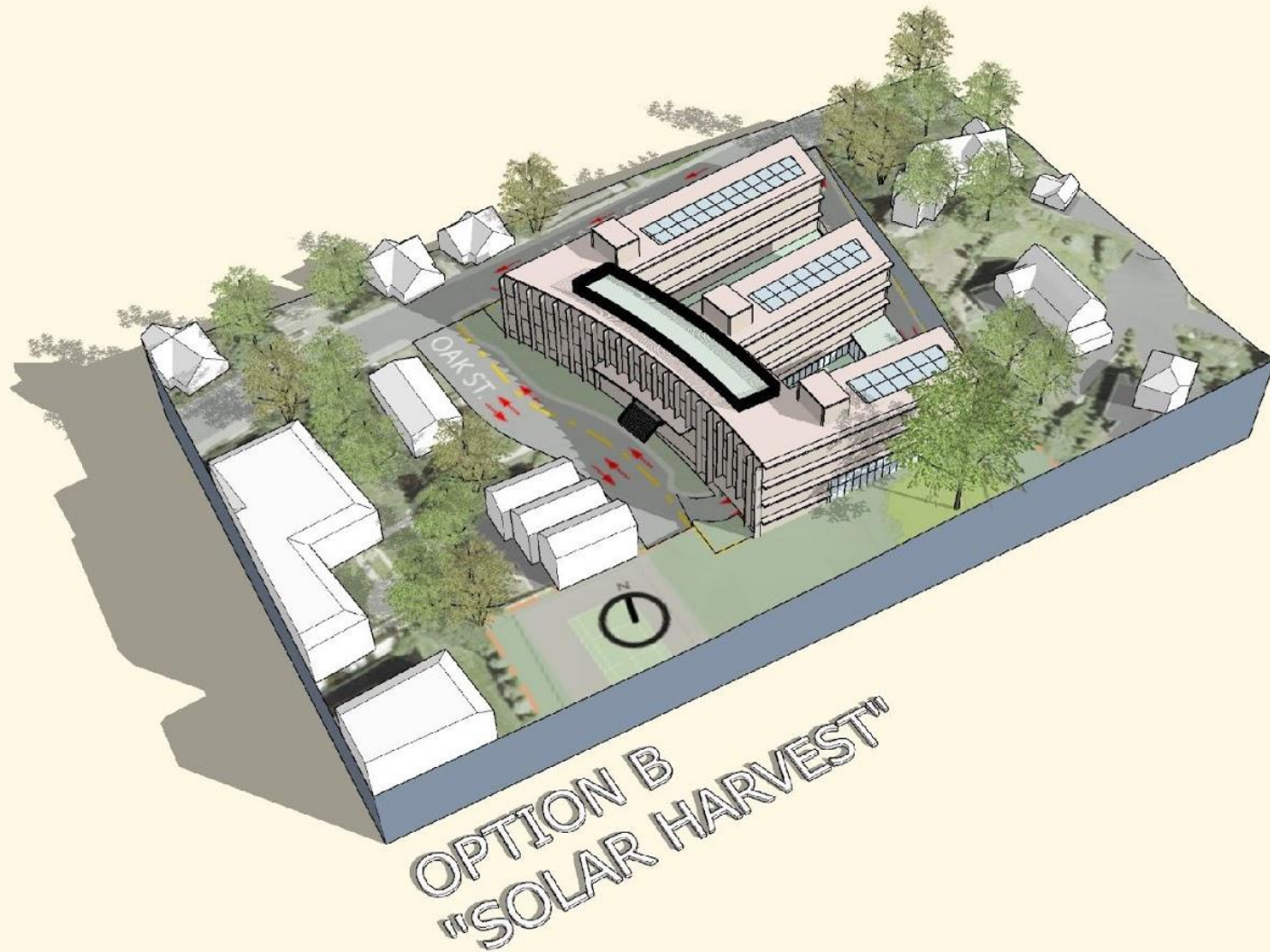
PUBLIC SCHOOLS of
BROOKLINE

School Type	2 Section; K to 8th Grade <i>(Reduced from 3+ section design in May 2018 9th School Alternate Site Study)</i>
Expanded Services	Early Education and Pre-K (BEEP), Special Education (RISE - Reaching for Independence Through Structured Education), English Learner Education (ELE), Native Language Support Program
Projected Total Number of Students	450 students, as distributed: <ul style="list-style-type: none">• 378 K-8, including METCO, Materials Fee, and ELE• 45 Pre-K• 27 RISE <i>(Reduced from 640 Students in May 2018 9th School Alternate Site Study)</i>
Total Number of Core (K-8) Classrooms	18 <i>(Reduced from 27 core classrooms in May 2018 9th School Alternate Site Study)</i>
Preliminary Staffing	86, including Kitchen and Custodial
Preliminary Size of School	108,250 Sq. Ft. (Gross Square Feet) <i>(Reduced from 143,000 Sq. Ft. in May 2018 9th School Alternate Site Study)</i>
Projected Transportation	121 cars, 3 buses, and 9 vans
	214 students live within a 0.5 mile radius of the Baldwin School <ul style="list-style-type: none">• 138 public school students; 76 private school students

Option B – Solar Harvest



Preliminary Concept Design Alternatives



Project Cost Estimate - Design Feasibility Phase

Feasibility Preferred Option B

- with 10 below grade parking spaces \$72 - 76M
- with 40 below grade parking spaces \$78 - 82M

Currently Proposed School Projects

- | | | |
|---|---------------------------|--------------------|
| • Baldwin Feasibility Preferred Option B | \$82M, + 450 seats | \$182k/seat |
| • Driscoll Feasibility Preferred Option H | \$105M, + 172 seats | \$610k/seat |
| • Pierce K5/678 * | \$173M, + 299 seats | \$579k/seat |
| • Pierce 5 Opt.1 * | \$142M, + 110 seats | \$1.3M/seat |

Previously Studied School Projects

- | | | |
|---------------------|---------------------|-------------|
| • Baker 5 * | \$138M, + 213 seats | \$648k/seat |
| • Baker 3/3 Opt.1 * | \$163M, + 402 seats | \$405k/seat |
| • Heath * | \$75M, + 234 seats | \$321k/seat |

*For previously studied and Pierce, based on HMFH 6/18 cost data and does not include full escalation, swing space or land acquisition.



2018 Projections - Total Growth since FY2005

PUBLIC SCHOOLS of
BROOKLINE



FY 2006: Actual K-8 Enrollment was **3,904** students

2018 K-8 Enrollment Projections *(including new housing developments)*

FY19	FY20	FY21	FY22	FY23	FY24	FY25	FY26	FY27	FY28	FY29
5,503	5,499	5,474	5,356	5,452	5,310	5,214	5,171	5,097	5,032	4,984

According to 2018-19 K-8 Enrollment Projections:

- In FY24, enrollment will still be 1,400 students more than it was in FY2006
- In FY29, enrollment will still be 1,080 students more than it was in FY2006



Substandard Spaces in Brookline's Schools

PUBLIC SCHOOLS of
BROOKLINE

